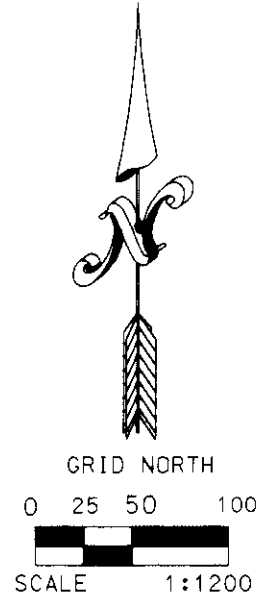
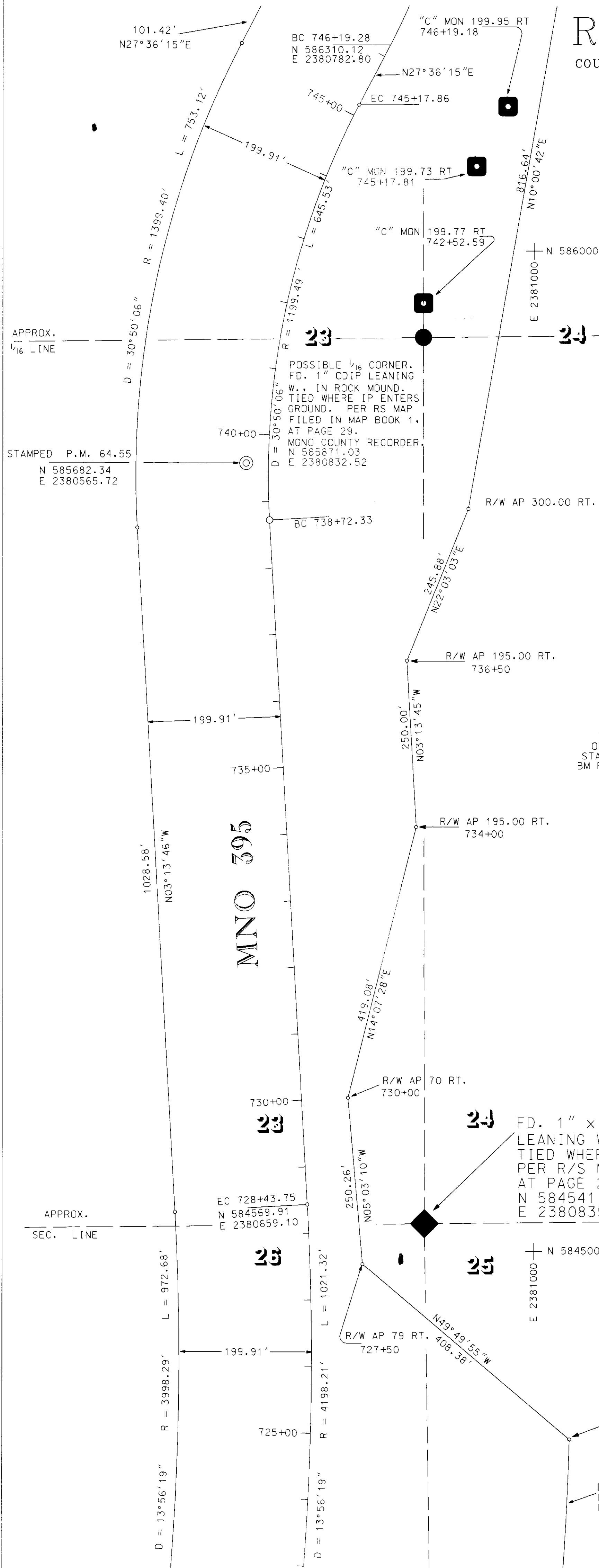


# RECORD OF SURVEY

COUNTY OF MONO STATE OF CALIFORNIA

## RS 34-63



MAPPING ANGLE AT PM 64.55 = 0°48'35"  
CALIFORNIA COORDINATE SYSTEM (1927), ZONE 3  
GEODETIC AZIMUTH = GRID AZIMUTH + MAPPING ANGLE  
COMBINED GRID FACTOR = 0.99957306

NOTE:  
**ALL VALUES ON THIS MAP ARE GRID, UNLESS OTHERWISE NOTED.**  
TO OBTAIN A GROUND DISTANCE, DIVIDE THE GRID DISTANCE  
BY THE GRID FACTOR.

BASIS OF BEARINGS:  
THE BEARINGS, DISTANCES & COORDINATES SHOWN ON THIS MAP ARE BASED  
ON PUBLISHED CALIFORNIA COORDINATE SYSTEM (1927), ZONE 3 VALUES FOR  
STATIONS CONWAY, CONWAY AZIMUTH MARK (DESTROYED IN 1994), BM F 123, AND  
BM F 123 AZIMUTH MARK. THE BASIS OF BEARINGS, AS MONUMENTED BY CONWAY  
AND CONWAY AZIMUTH MARK, IS A GRID BEARING OF N 21° 15' 39" E.

THE STATE OF CALIFORNIA OR ITS OFFICERS OR AGENTS  
SHALL NOT BE RESPONSIBLE FOR THE ACCURACY  
OR COMPLETENESS OF ELECTRONIC COPIES  
OF THIS MAP SHEET.

### LEGEND

- ⊙ INDICATES A SET NO. 6 REBAR WITH AN ALUMINUM CAP. STAMPED AS NOTED.
- INDICATES AN ANGLE POINT ON THE RIGHT-OF-WAY, NOTHING SET.
- ▽ INDICATES A SET PROJECT CONTROL MONUMENT, DESCRIBED AS NOTED.
- INDICATES A FOUND NGS MONUMENT, DESCRIBED AS NOTED.
- ◆ INDICATES A FOUND LAND NET CORNER, DESCRIBED AS NOTED.
- INDICATES A FOUND 6" x 6" CONCRETE RIGHT-OF-WAY MONUMENT.
- FOUND MONUMENT AS DESCRIBED.
- RIGHT-OF-WAY PER CALTRANS RIGHT OF WAY RECORD MAPS.

P.S. 1043 89 17-8