

CORNER RECORD

City of BERKELEY

Document Number

CR 3491

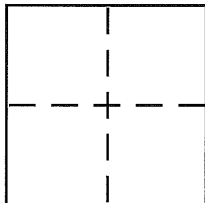
County of

ALAMEDA

California

Brief Legal Description

CITY OF BERKELEY MON 10284



CORNER TYPE

Government Corner ☐ Control ☐
Meander ☐ Property ☐
Rancho ☐ Other ☒
Date of Survey 8-15-08

COORDINATES (Optional)

N. _____
E. _____
Zone _____ NAD27 ☐ NAD83 ☐
NAD83 Epoch _____
Elev. _____
Vert. Datum: NGVD29 ☐ NAVD88 ☐
Meas. Units: Metric ☐ Imperial ☐

Corner -

Left as found ☐

Found and tagged ☐

Established ☐

Reestablished ☒

Rebuilt ☐

Identification and type of corner found: Evidence used to identify or procedure used to establish or reestablish the corner:

SEE PAGE 2

A description of the physical condition of the monument as found and as set or reset:

SEE PAGE 2

SURVEYOR'S STATEMENT

This Corner Record was prepared by me or under my direction in conformance with the Land Surveyor's Act on SEPT 2 2008

Signed

[Signature]

P.L.S or R.C.E. No.

PLS 5003



COUNTY SURVEYOR'S STATEMENT

This Corner Record was received

9-26-08

and examined and filed

11-9-08

Signed

[Signature]

P.L.S or R.C.E. No.

5726

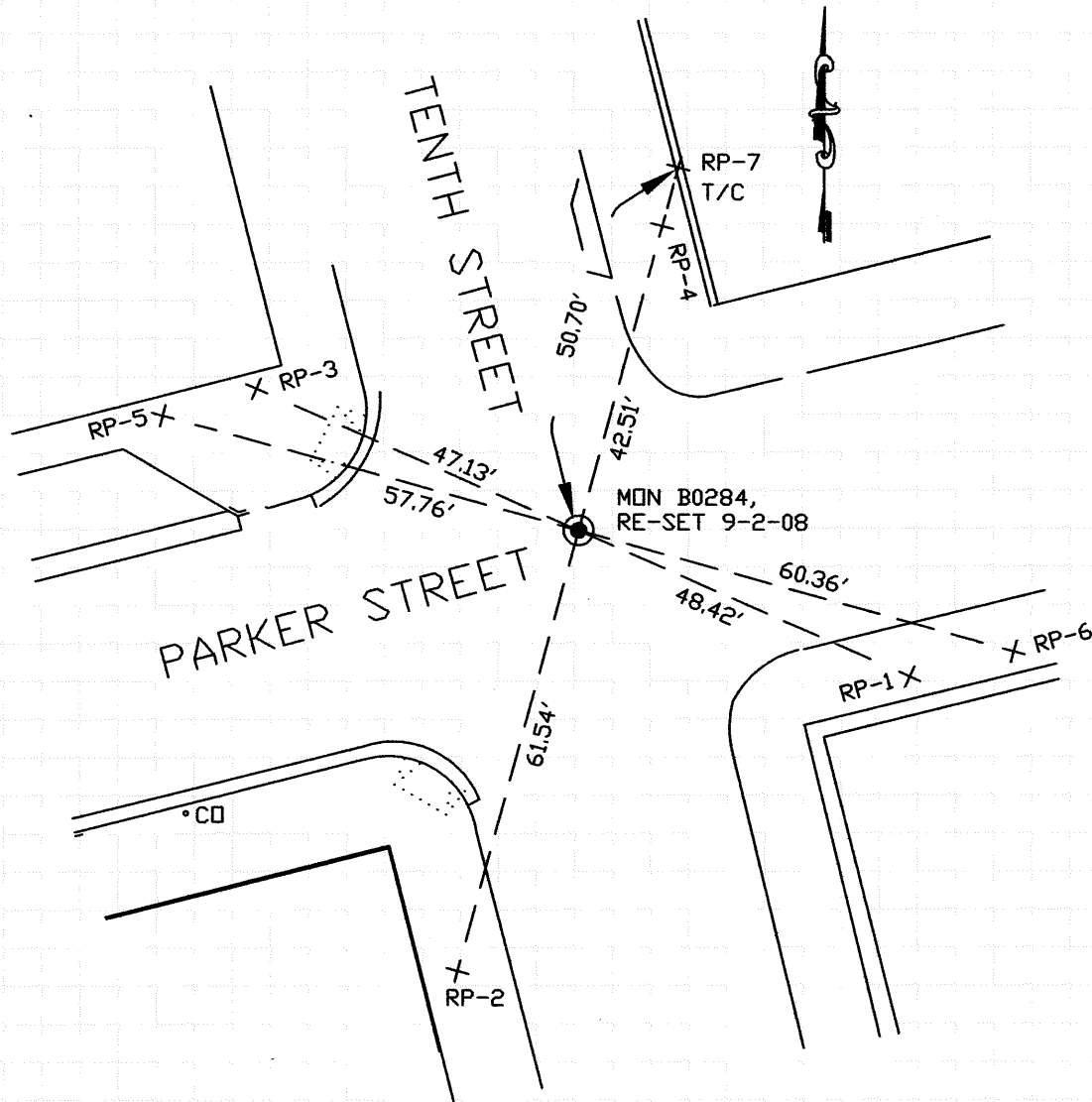
Title

COUNTY SURVEYOR



County Surveyor's Comment

NOTE: See prior CR 3340



LEGEND

- STANDARD WELL-TYPE CITY MONUMENT WITH $\frac{1}{4}$ " PIN, RE-SET 9-2-08 WITH BRASS CAP AND PUNCH, TAGGED LS5003
- + SET REFERENCE CROSS IN SIDEWALK

NOTE:

THE EXISTING MONUMENT AS SHOWN IS REFERENCED BY STRAIGHT LINES BETWEEN RP-1 TO RP-3, RP-2 TO RP-4 AND RP-7 AND RP-5 TO RP-6.