

31. PENETRATION THRU WALL WITH ONE HOUR FIRE RATED SLEEVE. REFER TO SLEEVE PENETRATION DETAIL ON SHEET P3.1.
32. PROPOSED LOCATION OF GAS METER. GAS METER BY XCEL ENERGY (SEE SHEET M.1.)
33. GAS METER WITH 415 MBH DEMAND @ 7" W.C. PRESSURE FOR 1 FEET DEVELOPED LENGTH OF PIPE. PROVIDE SSV-1 (SIEMMC SHUT-OFF VALVE) FOR GAS ENTRY. REFER TO GAS EQUIPMENT SCHEDULE AND SIEMMC SHUT-OFF VALVE SCHEDULE ON SHEET P2.1.
34. PAINT EXPOSED GAS PIPING TO MATCH EXTERIOR OF BUILDING
35. EXTEND NATURAL GAS PIPE TO SERVE EQUIPMENT.

## P1.1

DWG Full Path: V:\Job Files\5721 N. Carefree Circle\14001 - Service Street Automotive Center\Drawings\2014-09-15 - Review Comments #14-0694\P1.1 and P2.1\_Plumbing\_5721N-14001.dwg  
 Plot Date/Time: 09/16/14 02:14pm

DWG Full Path: V:\Auto Files\5721 N. Carefree Circle\5721 N. Carefree Circle.dwg  
PLOT Date/Time: 09/16/14 02:14pm  
DWG Full Path: V:\Auto Files\5721 N. Carefree Circle\5721 N. Carefree Circle.dwg  
PLOT Date/Time: 09/16/14 02:14pm

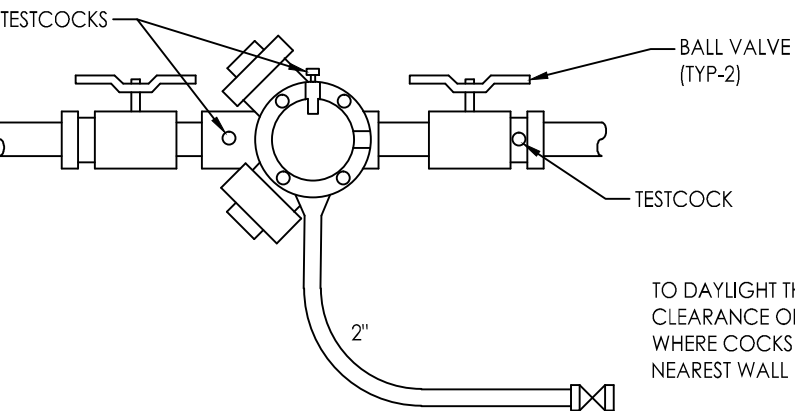
PLUMBING FIXTURE SCHEDULE

|                      |  |
|----------------------|--|
| TYPE:                | WC-1   |
| DESCRIPTION:         | WATER CLOSET, FLOOR MOUNTED, HANDICAPPED HEIGHT, 1.6 GALLON PER FLUSH, VITREOUS CHINA, SIPHON JET LONGATED CLOSET BOWL WITH CLOSE-COUPLED TANK AND BOLT COVERS.  |
| TYPE:                | L-1  |
| DESCRIPTION:         | LAVATORY, UNDER-COUNTER MOUNT, VITREOUS CHINA, UNGLAZED RIM WITH MOUNTING KIT, 21-1/2" X 17-3/4" OVAL BOWL PUNCHED FOR 8" CENTERS WITH FRONT OVERFLOW.   |
| FAUCET:              | TWO HANDLE 8" WIDESPREAD CAST BRASS VALVE BODIES WITH WASHERLESS CERAMIC DISC VALVE CARTRIDGES FOR USE WITH WRIST BLADE LEVER HANDLES. VALVE BODY CONNECTIONS TO SPOUTS SHALL BE RIGID COOPER. NO RUBBER HOSES ARE ACCEPTABLE. FAUCET, AMERICAN STANDARD "HERITAGE" #7490.172H   |
| P-TRAP               | 1-1/4" CHROME PLATED CAST BRASS TRAP WITH CLEAN-OUT, TAILPIECE AND EXTENSION TO WALL WITH ESCUTCHEON PLATE, MCGUIRE #8672  |
| ROUGH-INS            | 2" WASTE, 2" VENT, 1/2" HOT & COLD WATER.  |
| TYPE:                | US-1   |
| DESCRIPTION:         | LAUNDRY SINK "TUF-TUB", 20" X 10" FLOOR MOUNTED, WITH WHITE ENAMEL ANGLE LEGS. FIAT MODEL #SF-1-F  |
| FAUCET:              | TWO HANDLE 4" WIDESPREAD CAST BRASS VALVE BODIES WITH WASHERLESS CERAMIC DISC VALVE CARTRIDGES FOR USE WITH WRIST BLADE LEVER HANDLES. VALVE BODY CONNECTIONS TO SPOUTS SHALL BE RIGID COOPER. NO RUBBER HOSES ARE ACCEPTABLE. 1/2" INLETS WITH BRASS COUPLINGS AND SHANK NUTS, GOOSE NECK FAUCET, AMERICAN STANDARD "HERITAGE" #7490.172H |
| ROUGH-INS            | 2" WASTE, 2" VENT, 1/2" HOT & COLD WATER.  |
| TYPE:                | FD-1   |
| SERVICE DESCRIPTION: | FLOOR DRAIN FOR TOILET ROOMS. CAST IRON BODY FLOOR DRAIN WITH 6" STANDARD SATIN NICKEL BRONZE ADJUSTABLE STRAINER, INTEGRAL CLAMPING DEVICE, BOTTOM OUTLET WITH 1/2" TRAP PRIMER CONNECTION. WADE #W-1103-STD-1-1/2  |
| ROUGH-INS            | 3" WASTE, 2" VENT, 1/2" COLD WATER TO TRAP.  |
| TYPE:                | SAND/OIL INTERCEPTOR   |
| DESCRIPTION:         | APPROVED SAND/OIL SEPARATOR REFER TO CIVIL ENGINEER FOR DETAIL AND INSTALLATION.   |

|                      |   |
|----------------------|---|
| TYPE:                | SWB   |
| DESCRIPTION:         | SAMPLE WELL BASIN, 15" DIA. CLASS 1 CONCRETE, GRADE 60 ASTM A615. FRAMES ARE GREY CAST IRON ASTM A48-76 CLASS 35. PARK EQUIPMENT MODEL #SWB-2   |
| TYPE:                | TD-1  |
| SERVICE DESCRIPTION: | TRENCH DRAIN IN SERVICE BAY AREA. POLYDRAIN SYSTEM. TRENCH DRAIN INTERLOCKING CHANNELS ARE PRECAST POLYMER CONCRETE, BUILT-IN .6% SLOPE WITH A TOP WIDTH OF 6.15". RADIUS BOTTOMS AND NOMINAL LENGTHS OF 1/2 OR 1 METER. LIGHT GALVANIZED STEEL GRATE, SLOTTED, LIGHT OR MEDIUM DUTY. POLYDRAIN (6.1" X 64" 8') |
| ROUGH-INS            | 4" WASTE, 3" VENT   |
| TYPE:                | TP-1  |
| DESCRIPTION:         | PRECISION PLUMBING PRODUCTS "PRIME RITE" AUTOMATIC TRAP PRIMER WITH DISTRIBUTION UNIT DU-2. WADE #B480-S9, 9" SQUARE STAINLESS STEEL FRAME WITH SECURED COVER ACCESS PANEL.   |
| ROUGH-INS            | 1/2" COLD WATER   |
| TYPE:                | BFP-1   |
| SERVICE DESCRIPTION: | DOMESTIC WATER SUPPLY TO SERVICE AREA. BACKFLOW PREVENTER, 1" FISCO MODEL B60 REDUCED PRESSURE BACKFLOW PREVENTER   |
| TYPE:                | HB-1  |
| DESCRIPTION:         | FREEZELESS WALL FAUCET WITH 3/4" MALE HOSE, AUTO DRAINING, THREADED VACUUM BREAKER, WITH METAL LOOSE KEY, WOODFORD MANUFACTURING CO. MODEL #25-34 COMPLETE WITH SHUT OFF VALVE  |
| ROUGH-INS            | 3/4" COLD WATER   |
| TYPE:                | WCO   |
| DESCRIPTION:         | WALL CLEAN-OUT, CAST IRON WITH THREADED ADJUSTABLE HOUSING, FERRULE WITH PLUG AND SATIN NICKEL BRONZE SECURED SCORAIATED COVER. WADE #W-600-1 (SEE SHEET P1.1)  |
| TYPE:                | WCO   |
| DESCRIPTION:         | WALL CLEAN-OUT, CAST IRON WITH TAPERED BRONZE COUNTERSUNK PLUG. WADE #W-850-D AND 9" SQUARE STAINLESS STEEL SECURED SMOOTH ACCESS COVER WITH NICKEL BRONZE FRAME. WADE #W-8490-SF   |

|              |   |
|--------------|---|
| TYPE:        | GCO   |
| DESCRIPTION: | CLEANOUT TO GRADE, CAST IRON FLOOR CLEANOUT WITH THREADED ADJUSTABLE HOUSING, FERRULE WITH PLUG, TRACTOR TOP AND VANDAL PROOF. WADE #W-6000-2.5.  |
| TYPE:        | EWB-1   |
| DESCRIPTION: | BRADLEY MODEL 519-2204BF WALL MOUNTED EYEWASH FIXTURE, BARRIER FREE COMPLYING WITH AMERICAN NATIONAL STANDARD Z358.1-2004. 10 INCH DIAMETER STAINLESS STEEL BOWL AND CHROME PLATED BRASS 1/8 INCH STAY-OPEN BALL VALVE WITH YELLOW PVC PUSH HANDLE. FURNISH NAVIGATOR MODEL 519-2000 EPAB THERMOSTATIC MIXING VALVE.  |
| TYPE:        | FS-1  |
| DESCRIPTION: | JOSAM MODEL 49323A-5 SANITARY CAST IRON FLOOR SINK WITH 3 INCH DIAMETER PIPE OUTLET, DOUBLE DRAINAGE FLANGE, ALUMINUM DOME STRAINER, AND NICK-ALLOY SQUARE GRATE SIZE 12 INCHES X 12 INCHES.  |
| TYPE:        | WF-1  |
| DESCRIPTION: | HALSEY TAYLOR MODEL HRFSBP CONTOUR 8-LEVEL BARRIER FREE DRINKING FOUNTAIN COMPLETE WITH BUBBLER, PUSHBUTTON ACTUATION, AUTOMATIC STREAM HEIGHT REGULATOR, AND INLET STRAINER. ONE PIECE WALL MOUNTED DRINKING FOUNTAIN ADA COMPLIANT FOR VISUAL AND MOTION DISABILITIES SHALL BE MOUNTED PER MANUFACTURER'S RECOMMENDATIONS, 3/8" DIAMETER WATER INLET AND 1-1/4" DRAIN OUTLET.   |
| TYPE:        | MB-1  |
| DESCRIPTION: | MOP SERVICE BASIN<br>FIAT MODEL M58-0424 MOLDED STONE MOP SERVICE BASIN SIZE 24" X 24" X 10" HIGH WITH INTEGRAL MOLDED SHELF, STAINLESS STEEL COMBINATION DOME STRAINER AND LINT BASKET AT 3" DIAMETER DRAIN OUTLET. FIAT MODEL B30-AA SERVICE SINK FAUCET, CHROME PLATED, WITH VACUUM BREAKER, INTEGRAL STOPS, ADJUSTABLE WALL BRACE, PAUL HOOK, AND 3/4" HOSE THREAD ON SPOUT. BODY INLETS 8 INCHES CENTER TO CENTER FOUR ARM HANDLES. VALVES CONTAIN RENEWABLE HUB, RENEWABLE SEATS, SWIVEL DISCS, ENCASED WASHERS, AND BRASS WASHER SCREWS. |

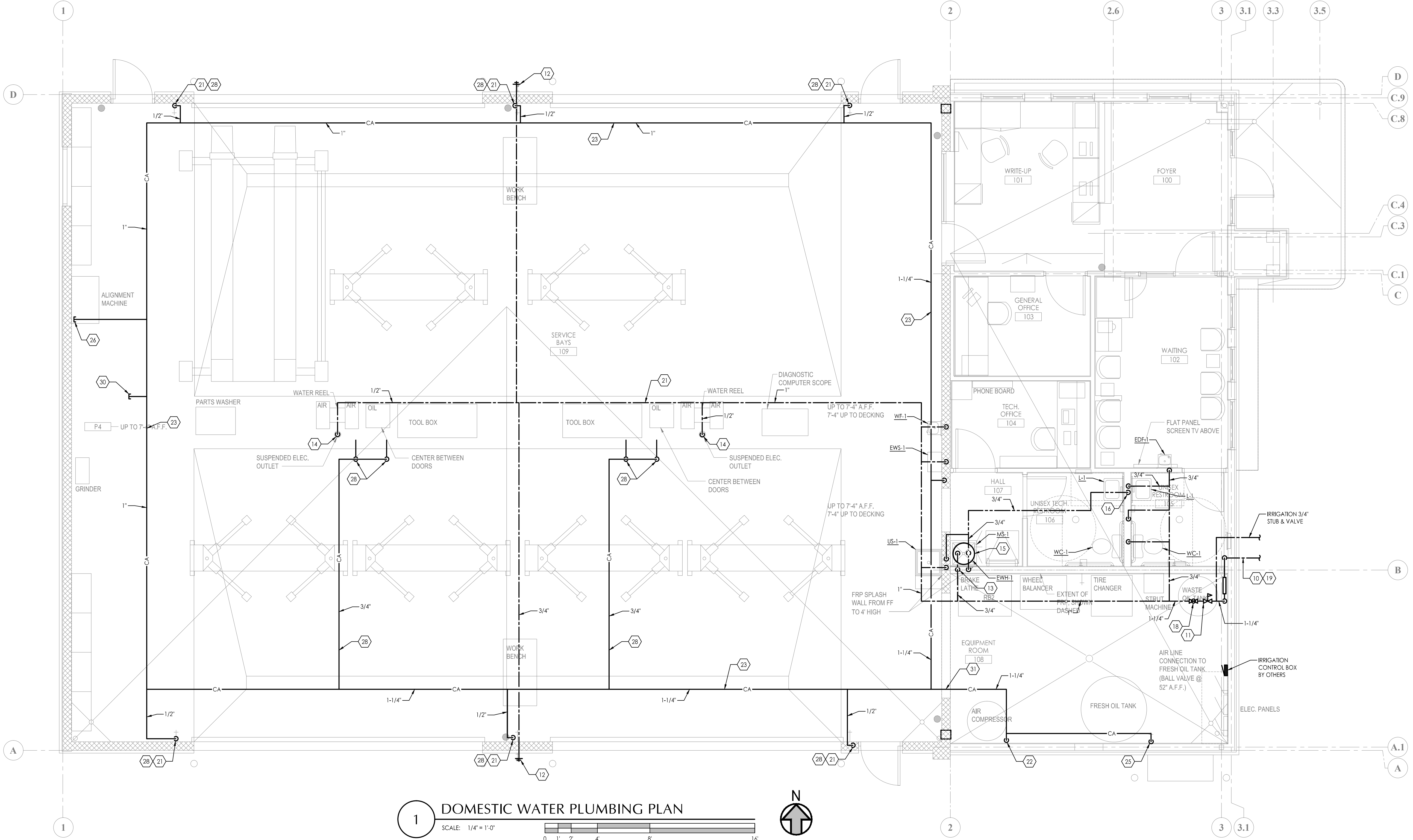
|              |  |
|--------------|--|
| TYPE:        | EWB-1  |
| DESCRIPTION: | ELECTRIC WATER HEATER<br>A.O. SMITH MODEL DEL-40 ELECTRIC WATER HEATER, 40 GALLON CAPACITY STORAGE TANK. RECOVERY IS 23 GALLONS PER HOUR AT AN 80 DEGREE F. TEMPERATURE RISE. 208 VOLT, SINGLE PHASE, 4500 WATTS.                                  |
| TYPE:        | EDF-1  |
| DESCRIPTION: | EKAY MODEL EBFATL-8, BARRIER FREE, TWO-LEVEL, WALL-MOUNTED, WATER COOLER. BASINS ARE ONE PIECE STAINLESS STEEL WITH INTEGRAL DRAIN GUARD AND EMBOSSED BUBBLER PAD. WATER COOLER IS HANDICAPPED ACCESSIBLE AND A.D.A. COMPLIANT. 115V/1PH, 4.8 FLA. |
| TYPE:        | AIR COMPRESSOR, WASTE OIL TANK & FRESH OIL TANK.   |
| DESCRIPTION: | BY OWNER   |
| TYPE:        | RD-1   |
| DESCRIPTION: | TURN MODEL Z-1-2212-C-R 12 INCH DIAMETER DECK RECEPTOR DRAIN WITH PIPE DIAMETER SHOWN ON PLAN, AND NH OUTLET. ROOF DRAIN TO HAVE CAST IRON BODY WITH GRAVEL GUARD AND LOW SILHOUETTE DOME.   |
| TYPE:        | SSV-1  |
| DESCRIPTION: | SEISMIC SHUTOFF VALVE<br>BY OWNER  |



TO DAYLIGHT THRU EXTERIOR WALL SIDE CLEARANCE OF 24" FROM WALL ON SIDE OF ASSY. WHERE COCKS ARE PRESENT, AND 12" FROM THE NEAREST WALL WHERE COCKS ARE NOT PRESENT.

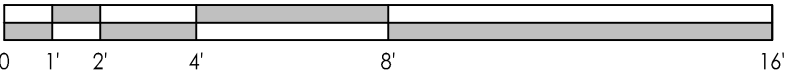
BACKFLOW PREVENTER DETAIL

SCALE: NO SCALE



DOMESTIC WATER PLUMBING PLAN

SCALE: 1/4" = 1'-0"



GREY WOLF ARCHITECTURE

- ARCHITECTURE PLANNING
- INTERIOR DESIGN
- 1543 champs st. #200
- denver, co 80202
- phone: 303.292.9107
- fax: 303.292.4297

VH Engineering, LLC

Phone: 303-296-6900  
Fax: 1-888-437-4540

Job# 5721T-14001

SERVICE STREET AUTOMOTIVE REPAIR

5721 N Carefree Circle

COLORADO SPRINGS, CO

ALL DRAWN AND WRITTEN INFORMATION APPEARING HEREIN IS COPYRIGHTED INFORMATION AND SHALL NOT BE DUPLICATED, DISCLOSED, OR OTHERWISE REPRODUCED WITHOUT THE WRITTEN CONSENT OF GREY WOLF ARCHITECTURE

PROJECT NUMBER 13-326.5

DRAWN

CHECKED

ISSUE NOT FOR CONSTRUCTION

06.05.14 09.03.14

CHECK SET 99% CD SET

ISSUE / REVISIONS

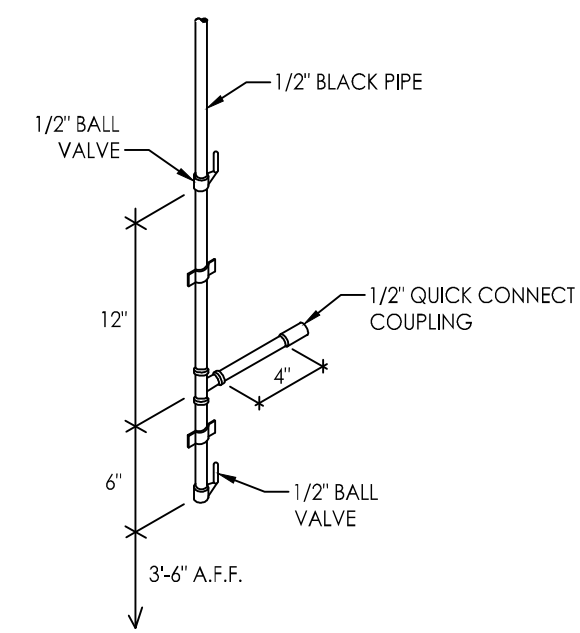


09.10.14 09.15.14

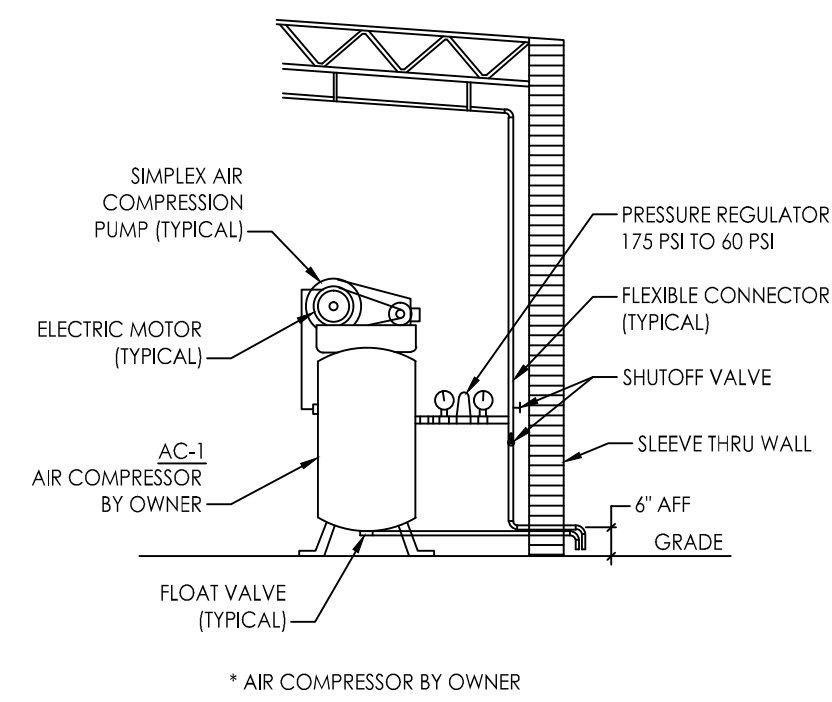
PERMIT REVIEW COMMENTS

DOMESTIC WATER PIPING PLAN

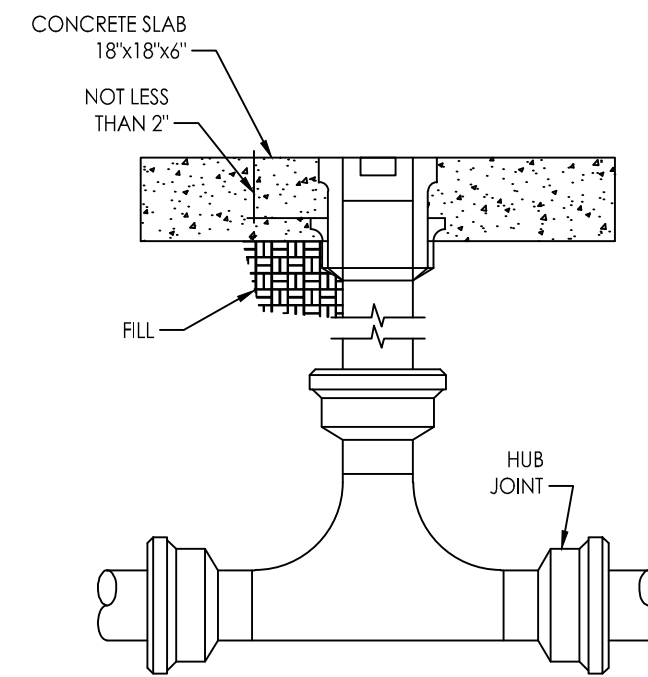
P2.1



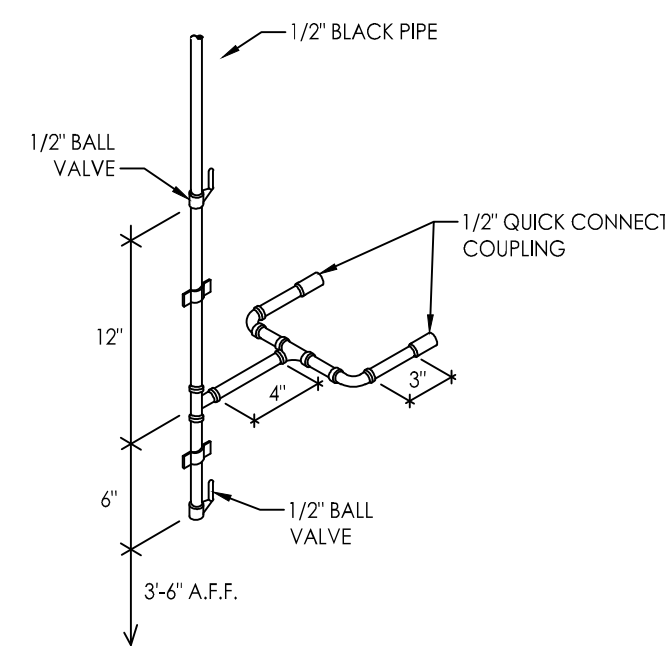
# AIR PIPING WITH RELIEF VALVE DIAGRAM



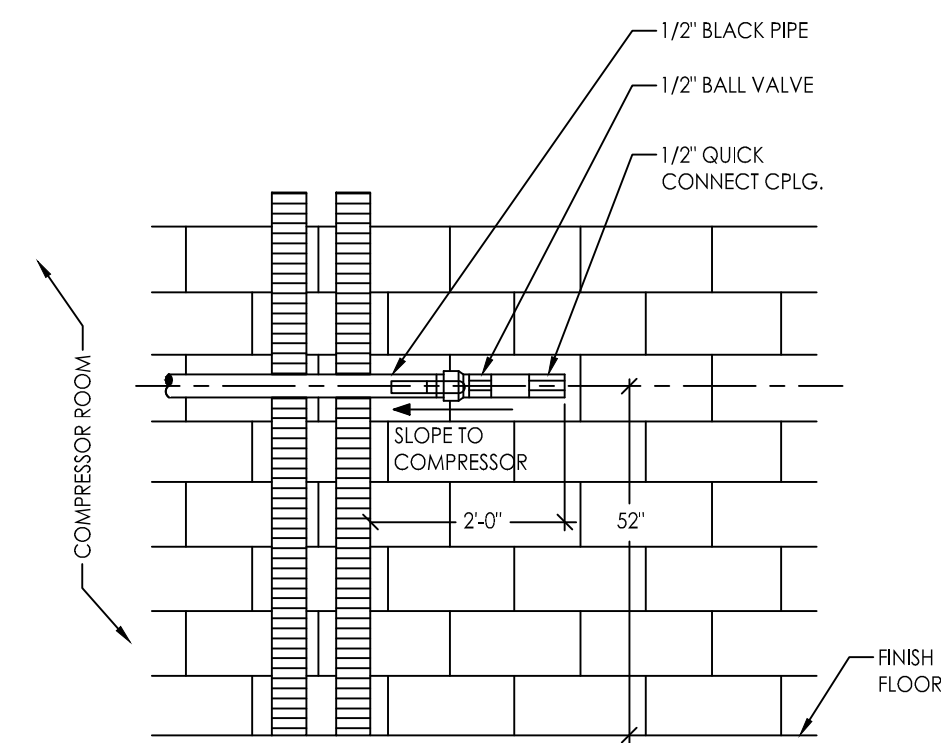
## AIR PIPING WITH RELIEF VALVE DIAGRAM



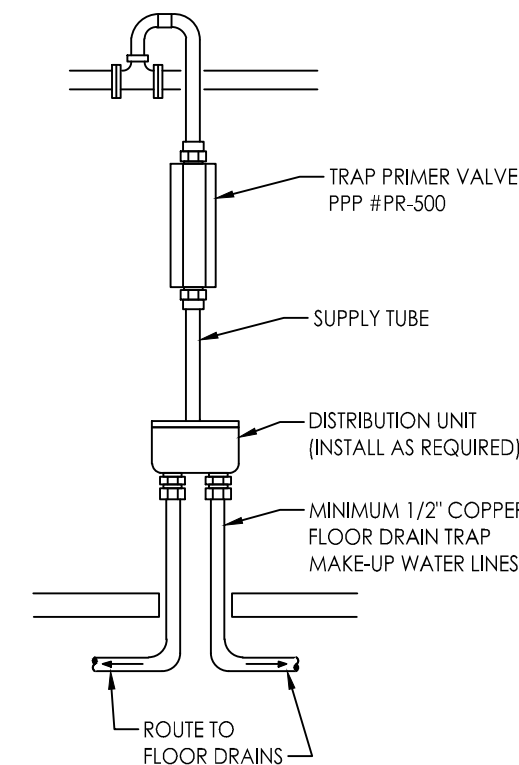
3 INSPECTION PORT  
SCALE: NO SCALE



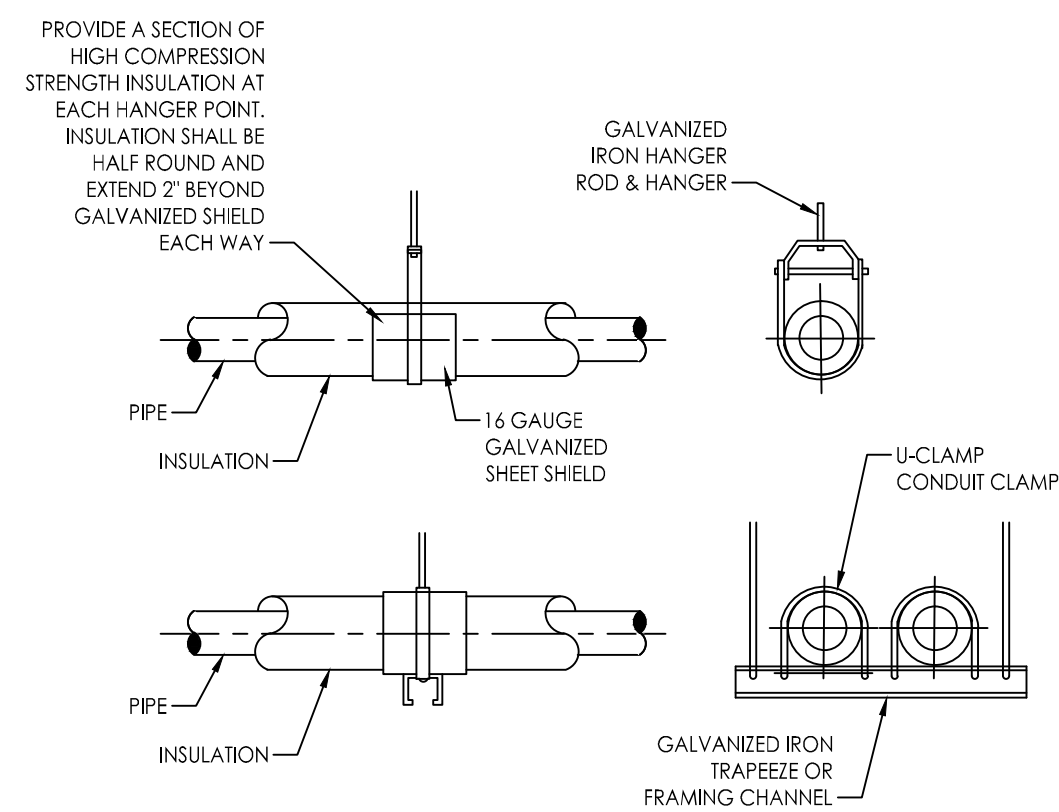
10 AIR DROP DET.  
SCALE: NO SCALE



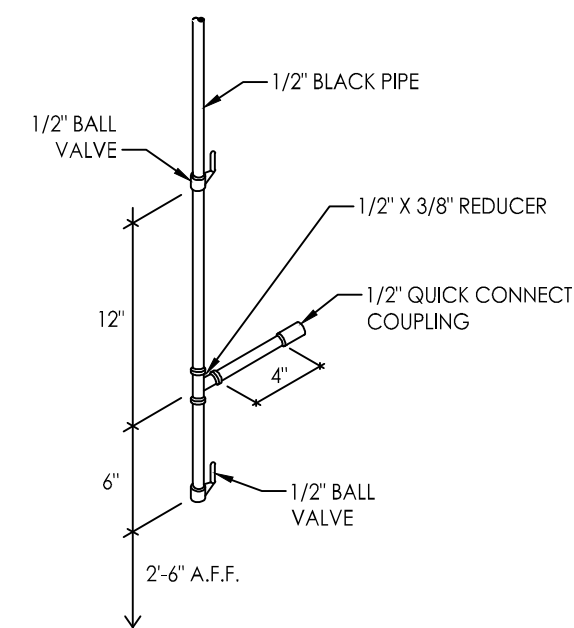
7 AIR LINE TO FRESH OIL TANK PUMP DETAIL  
SCALE: NO SCALE



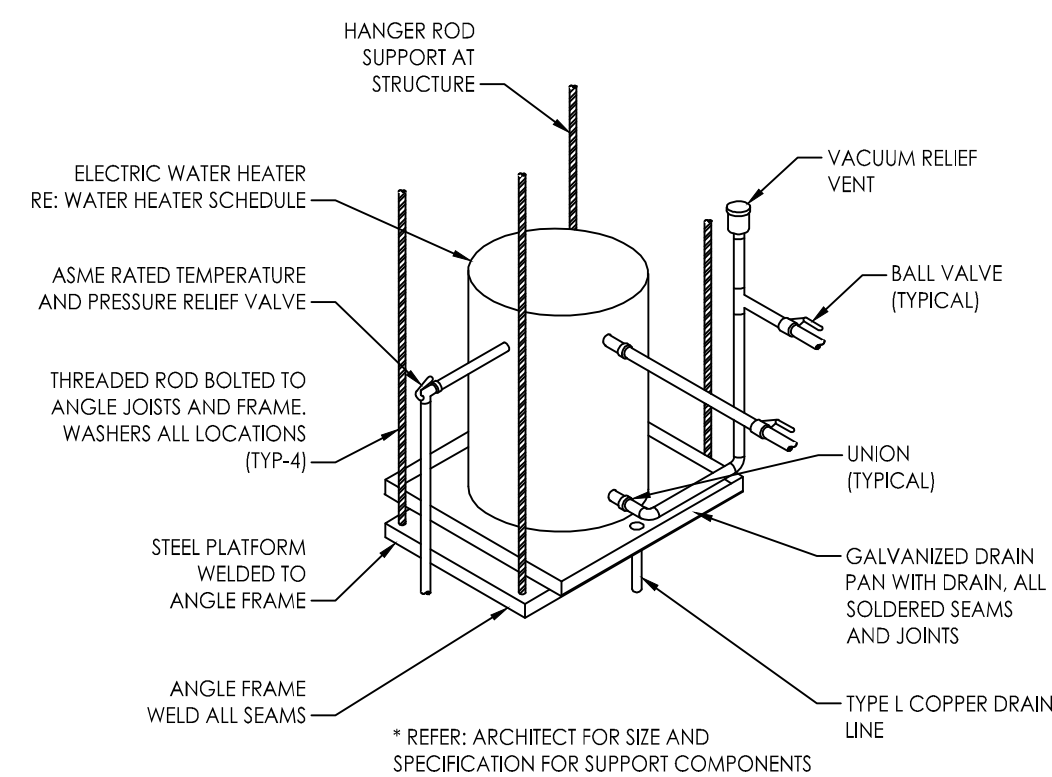
4 TRAP PRIMER  
DISTRIBUTION UNIT



## 11 PIPE HANGER



8 SINGLE AIR DROP DETAIL  
SCALE: NO SCALE



## 5 WATER HEATER DETAIL

SCALE: NO SCALE

ARCHITECTURE PLANNING  
INTERIOR DESIGN  
1543 champa st. #200  
denver, co 80202  
phone: 303.292.9107  
fax: 303.292.4297

**VH** 1825 Lawrence Street  
Suite 250  
Denver, CO 80202  
*Engineering, LLC*

Phone: 303-296-6900  
Fax: 1-888-437-4540  
Job# 5721T-14001

GREY WOLF ARCHITECTURE

**SERVICE STREET AUTOMOTIVE REPAIR**  
**5721 N Carefree Circle**  
 COLORADO SPRINGS, CO

ALL DRAWN AND WRITTEN INFORMATION  
APPEARING HEREIN IS COPYRIGHTED  
INFORMATION AND SHALL NOT BE  
DUPLICATED, DISCLOSED, OR  
OTHERWISE DUPLICATED WITHOUT THE  
WRITTEN CONSENT OF GREY WOLF  
ARCHITECTURE

|                |          |
|----------------|----------|
| PROJECT NUMBER | 13-326.5 |
|----------------|----------|

DRAWN

CHECKED

ISSUE NOT FOR CONSTRUCTION

|          |            |
|----------|------------|
| 06.05.14 | CHECK SET  |
| 09.03.14 | 99% CD SET |

| ISSUE / REVISIONS |                 |
|-------------------|-----------------|
| 09.10.14          | PERMIT          |
| 09.15.14          | REVIEW COMMENTS |

## PLUMBING DETAILS

### P3.1

DWG-File Path: \\4001 - Service Street Automotive Center\Drawings\2014-09-15 - Review Comments #14.66949.03.1\_Plumbing Details\_57211-14001.dwg  
Plot Date/Time: 09/16/14 02:14pm

PLUMBING GENERAL NOTES:

THE SUB-CONTRACTOR SHALL VISIT THE JOB SITE AND BECOME FAMILIARIZED WITH ALL REQUIREMENTS OF THE CONTRACT PRIOR TO SUBMISSION OF BID. THE SUB-CONTRACTOR SHALL NOTIFY THE ARCHITECT/ENGINEER OF ANY CONFLICTS PRIOR TO BID OR START OF INSTALLATION.

THE SUB-CONTRACTOR SHALL ARRANGE FOR ALL INSPECTIONS WHEN THEY BECOME DUE AND SHALL NOT COVER ANY WORK UNTIL APPROVED BY THE INSPECTION AUTHORITY.

ANY AND ALL FEES ASSOCIATED WITH THE PLUMBING WORK, INCLUDING CONSTRUCTION AND INSPECTIONS SHALL BE PAID FOR BY THE SUB-CONTRACTOR IN ORDER TO DELIVER A COMPLETE AND FINISHED BUILDING, READY FOR OCCUPANCY AND 100% USAGE.

THE SUBMISSION OF A PROPOSAL WILL BE CONSIDERED AS EVIDENCE THAT THE SUB-CONTRACTOR HAS FAMILIARIZED HIMSELF/HERSELF WITH THE PLANS AND BUILDING SITE. CLAIMS MADE SUBSEQUENT TO THE PROPOSAL FOR MATERIALS AND LABOR BECAUSE OF DIFFICULTIES ENCOUNTERED, WILL NOT BE RECOGNIZED IF THEY COULD HAVE BEEN FORESEEN HAD PROPER EXAMINATION BEEN MADE.

ANY COSTS DUE TO THE LACK OF COOPERATION AMONG TRADES SHALL BE BORNE BY THE SUB-CONTRACTOR.

THE INFORMATION PRESENTED ON THESE DRAWINGS IS DIAGRAMATIC IN NATURE. IT DOES NOT NECESSARILY REPRESENT ALL FITTINGS, HANGERS, ETC. FOR A COMPLETE WORKING SYSTEM. PROVIDE ALL MATERIALS AND LABOR FOR COMPLETELY FINISHED AND OPERATIONAL SYSTEMS.

REFER TO LATEST ARCHITECTURAL DRAWINGS FOR EXACT WALL LOCATIONS, DIMENSIONS, AND PLUMBING FIXTURE LOCATIONS AND REQUIREMENTS.

SUB-CONTRACTOR SHALL NOTIFY THE ENGINEER OF ANY ALTERATIONS REQUIRED BY THE OWNER, ARCHITECT, OR FIELD CONDITIONS.

ALL EQUIPMENT SHALL BE NEW, SHALL COMPLY WITH ALL APPLICABLE INDUSTRY STANDARDS, WITH SPECIFICATIONS ON DRAWINGS, AND ENERGY CODE COMPLIANCE CERTIFICATION AS ADOPTED BY THE STATE, AS WELL AS LOCAL JURISDICTIONAL BUILDING DEPARTMENT. SUBMIT DATA FOR APPROVAL PRIOR TO ORDERING EQUIPMENT. SUBMITTAL SHALL INCLUDE ENERGY CODE COMPLIANCE CERTIFICATION.

SUB-CONTRACTOR SHALL SUBMIT SHOP DRAWINGS FOR ALL EQUIPMENT INCLUDING, FIXTURES SPECIFIED IN EQUIPMENT SCHEDULE ON DRAWINGS FOR REVIEW/APPROVAL (5) DAYS PRIOR TO BID. EQUIPMENT IS NOT TO BE ORDERED WITHOUT SUBMITTAL TO ARCHITECT/OWNER/ENGINEER.

ALL VENT LINES SHALL BE SLOPED AWAY FROM CONNECTIONS TO STACK AND TOWARD THE FIXTURE IN ORDER TO PREVENT THE ENTRAPMENT OF FLUIDS IN THE VENT LINE.

ALL DRAINAGE LINES SHALL BE SLOPED AT A MINIMUM OF 1/4 IN. PER LINEAL FOOT UNLESS OTHERWISE SHOWN OR NOT ALLOWED DUE TO FIELD CONDITIONS.

VENT PIPES AND FITTINGS SHALL BE SERVICE WEIGHT CAST IRON NO HUB OR DWV COPPER AND IN ACCORDANCE WITH LATEST EDITION INTERNATIONAL PLUMBING CODE. ALTERNATE MATERIALS SHALL BE SUBMITTED AND APPROVED BY THE BUILDING DEPARTMENT PRIOR TO START OF WORK.

SOIL AND WASTE PIPING SHALL BE SERVICE WEIGHT CAST IRON SOIL PIPE WITH NO HUB FITTINGS AND SHALL BE IN ACCORDANCE WITH LATEST EDITION INTERNATIONAL PLUMBING CODE. ALTERNATE MATERIALS SHALL BE SUBMITTED AND APPROVED BY THE BUILDING DEPARTMENT PRIOR TO START OF WORK.

DOMESTIC WATER PIPING ABOVE GROUND SHALL BE TYPE "1" HARD DRAWN COPPER WITH WROUGHT COPPER FITTINGS. JOINTS AND CONNECTIONS SHALL BE COMPLETED WITH 95 PERCENT TIN, 5 PERCENT ANTIMONY WITH BRAZED JOINTS AND WROUGHT COPPER FITTINGS. WATER PIPING BELOW GROUND SHALL BE TYPE "K".

PIPE SUPPORTS SHALL BE ADJUSTABLE BAND HANGERS WITH ZINC ELECTROPLATING FOR STEEL PIPE AND COPPER ELECTROPLATING FOR COPPER PIPE.

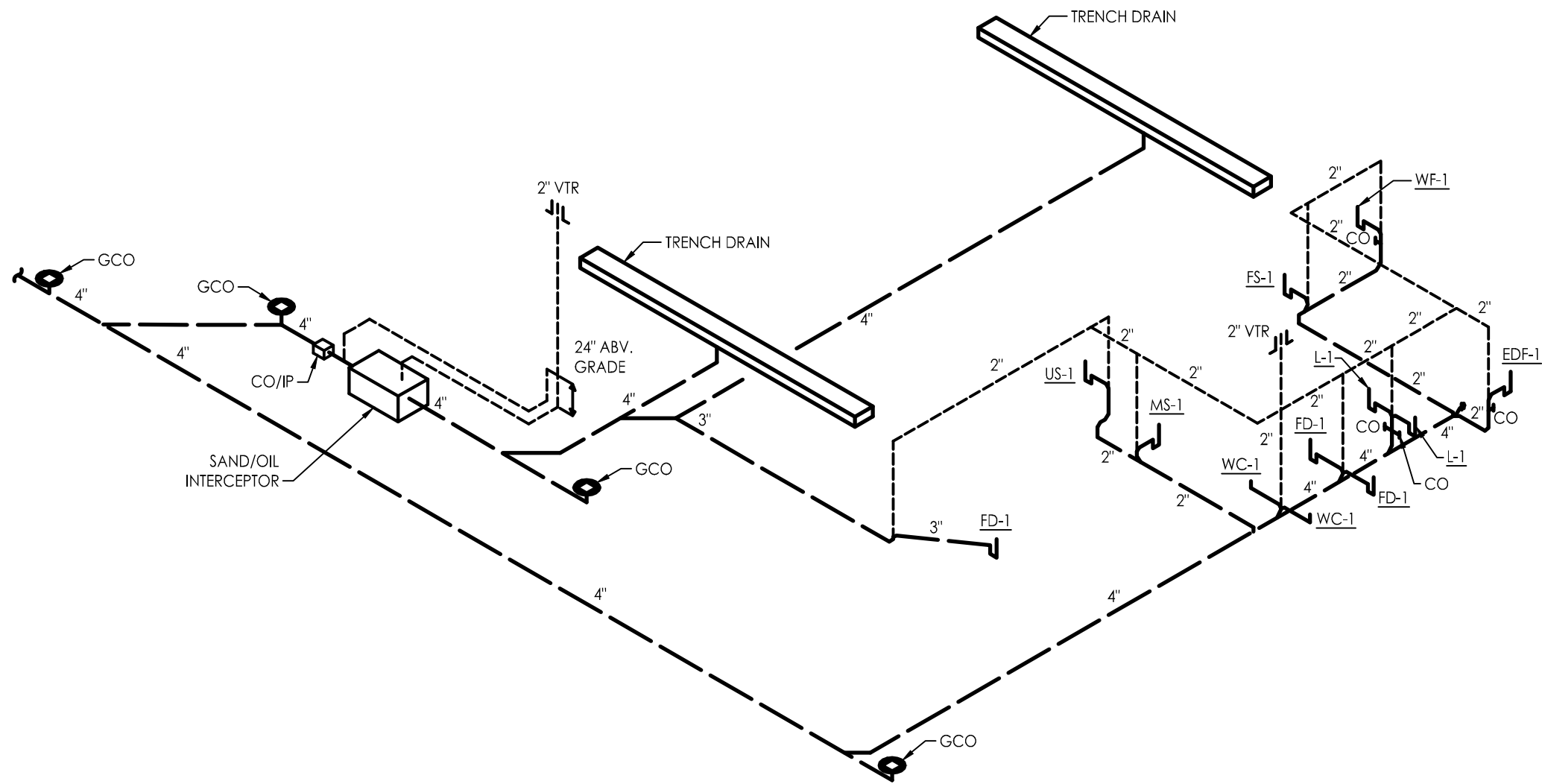
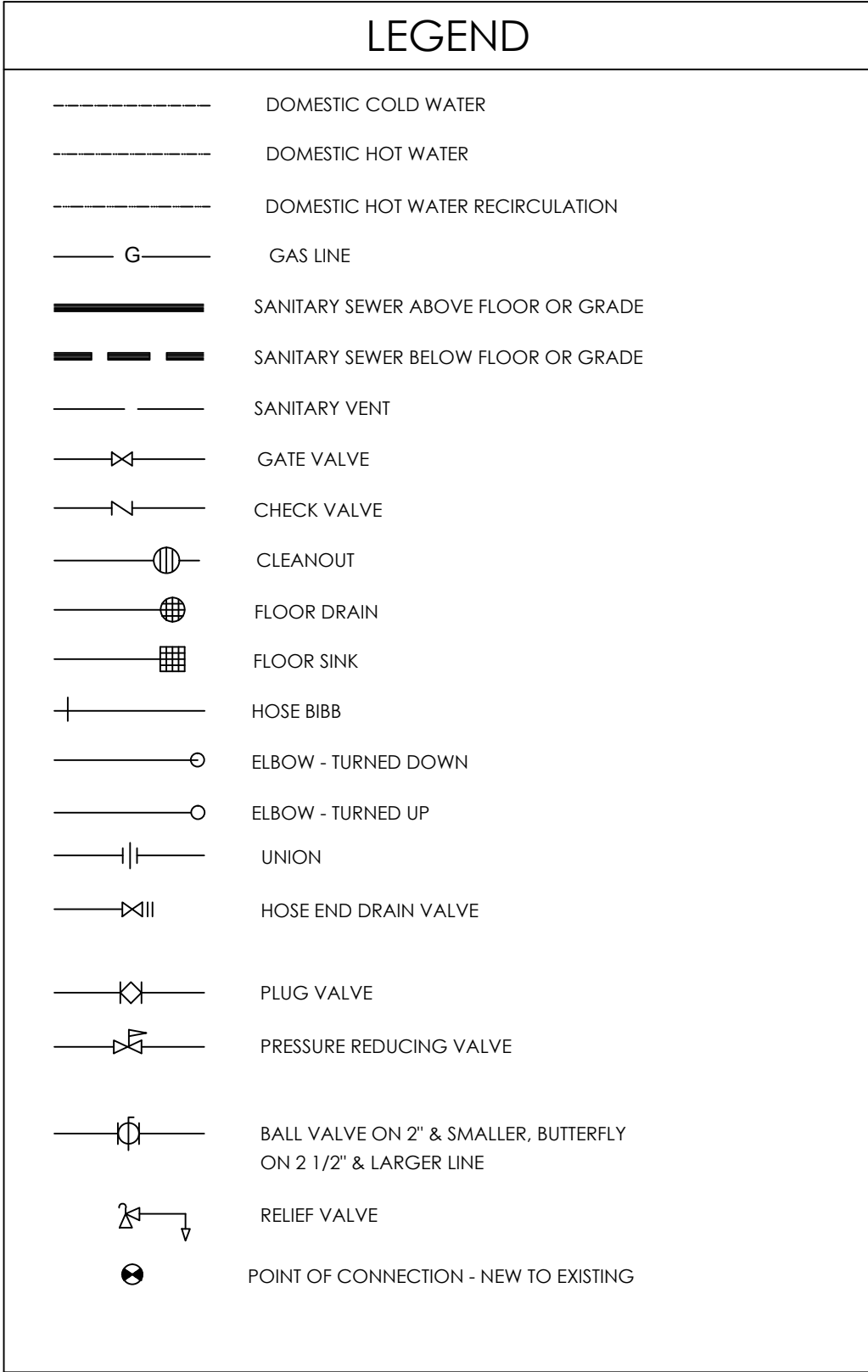
INSULATE ALL PIPING, VALVES, AND FITTINGS FOR DOMESTIC COLD AND HOT WATER WITH 1/2" PRE-FORMED FIBERGLASS INSULATION WITH "K" FACTOR OF 0.30 MAXIMUM AT 200 DEG. F. MEAN TEMPERATURE. PROVIDE ALL SERVICE, SELF LAP JACKET, AND VAPOR BARRIER.

THIS SUB-CONTRACTOR SHALL PROVIDE PLUMBING EQUIPMENT, TRIM AND FITTINGS WHERE SPECIFIED OR AS REQUIRED FOR COMPLETE INSTALLATION. THIS SUB-CONTRACTOR SHALL ROUGH-IN AND CONNECT ALL EQUIPMENT INCLUDING EQUIPMENT FURNISHED BY OTHERS.

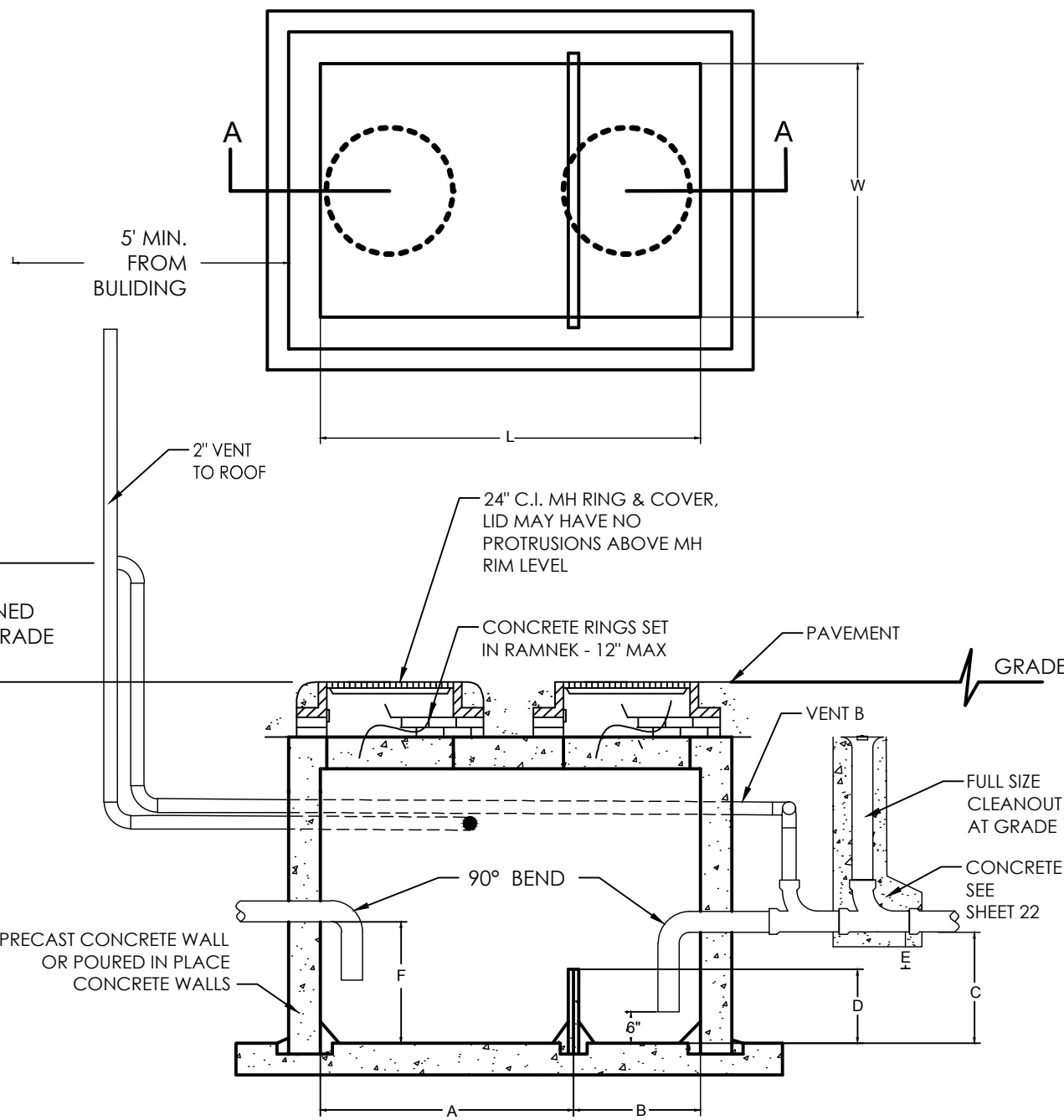
SOIL, WASTE, AND VENT SYSTEMS SHALL BE TESTED AT 1 - P.S.I.G. FOR 30 MIN. WITH NO LEAKS. POTABLE WATER PIPES, VALVES, AND FITTINGS SHALL BE DISINFECTED, AND HYDROSTATICALLY TESTED AT 125 P.S.I.G. FOR 60 MIN. WITH NO DROP IN PRESSURE.

ALL COLD AND HOT WATER SUPPLY LINES SHALL BE RUIN CONCEALED ABOVE CEILING AND/OR CONCEALED IN WALLS UNLESS OTHERWISE NOTED. INSTALL ON BUILDING SIDE OF INSULATION AND PROVIDE HEAT TAPE WHERE NECESSARY TO KEEP LINES FROM FREEZING.

FOR BUILDINGS WHICH ARE NOT OPERATED YEAR ROUND, PROVIDE FOR COMPLETE WATER DISTRIBUTION DRAIN DOWN. ALL SUPPLY LINES SLOPED TO LOW POINT IN MECHANICAL ROOM OR AT POINT OF WATER ENTRY. PROVIDE FLOOR DRAIN TO ACCEPT DISCHARGE FROM BALL VALVE PIPED TO FLOOR DRAIN. INSTRUCT OWNER, IN WRITING, ON METHOD OF WINTERING WITH ATTENTION TO ALL PLUMBING FIXTURES.



1 PLUMBING WASTE & VENT ISOMETRIC  
SCALE: NO SCALE



| RATED CAPACITY | L    | W   | A   | B   | C   | D   | E   |
|----------------|------|-----|-----|-----|-----|-----|-----|
| 300 GALLONS    | 72"  | 48" | 24" | 24" | 21" | 14" | 7"  |
| 750 GALLONS    | 96"  | 48" | 32" | 32" | 38" | 25" | 13" |
| 1000 GALLONS   | 108" | 72" | 36" | 36" | 30" | 20" | 10" |
| 1500 GALLONS   | 120" | 72" | 40" | 40" | 40" | 27" | 13" |

NOTE:  
F=C+2"  
G=D-2"

TOP OF VAULT BELOW FINISHED GRADE OR AT GRADE. IF BELOW GRADE, RING AND COVER SHALL BE ADJUSTED TO FINAL GRADE USING A MINIMUM OF 4" GRADE RING(S) AND A MAXIMUM OF 12" GRADE RING(S). FOR DEPTHS OVER 12" A MAN-HOLE BARREL SECTION WILL BE REQUIRED WITH A FLAT TOP FOR DEPTHS OF 4' OR LESS AND AN ECCENTRIC CONE TOP FOR DEPTHS GREATER THAN 4'

SAND OIL INTERCEPTOR SIZING PER COLORADO SPRINGS WATER AND SANITATION DISTRICT (BASED ON FACILITY FLOOR AREA)  
4028 SQ. FT. / 100 SQ. FT./CU. FT. X 7.48 GAL./CU.FT. X 2 HR. RETENTION TIME = 602.59 GALLONS

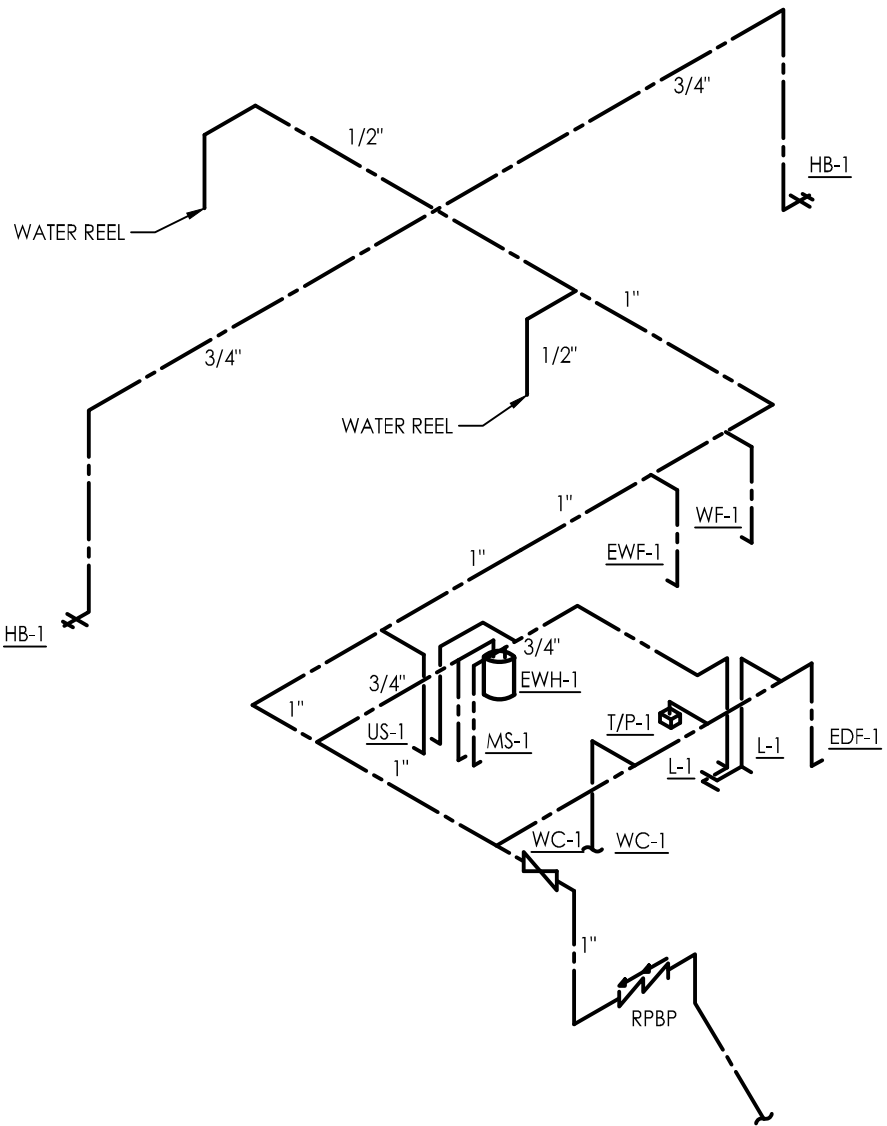
USE MINIMUM 750 GAL SAND/OIL INTERCEPTOR PER COLORADO SPRINGS WATER REQUIREMENTS

4 DOMESTIC WATER ENTRY SCHEMATIC DETAIL  
SCALE: NO SCALE

NOTES:

1. INSTALL METER IN HORIZONTAL PLANE, WITH METER SET UPRIGHT ONLY.
2. NO GATE OR BUTTERFLY VALVES ON 1-1/2" OR 2" SERVICE. USE 1/4 TURN BALL VALVES WITH HANDLE.
3. TO PROTECT THE METER FROM DEBRIS AND TO CONDITION INCOMING FLOWS FROM UPSTREAM OF THE METER, A STRAINER IS REQUIRED TO BE INSTALLED IMMEDIATELY UPSTREAM OF THE METER.
4. METER INSTALLATION AND WIRE HOOK-UPS BY LOCAL WATER AUTHORITY. WIRE SUPPLIED BY WATER AUTHORITY IS TO BE 3-CONDUCTOR, 18 GAUGE.
5. BACKFLOW PREVENTION ASSEMBLIES MUST HAVE TEN (10) PIPE DIAMETERS UPSTREAM FROM NEAREST FITTING AND THREE (3) PIPE DIAMETERS DOWNSTREAM TO NEXT FITTING.
6. CONTAINMENT BACKFLOW PREVENTERS SHALL CONFORM TO THE LOCAL CROSS CONNECTION CONTROL REQUIREMENTS FOR PROPER APPLICATION, INSTALLATION AND INSPECTION. MIN. SIDE CLEARANCE 12", MAX. CLEARANCE 36" FROM FLOOR; MIN. SIDE CLEARANCE WHEN TEST COCK FACES A WALL IS 24". WHEN TEST COCKS FACE AWAY FROM WALL, MIN. CLEARANCE IS 12". NO ELECTRICAL COMPONENTS ARE ALLOWED IN THE SAME GENERAL AREA AS THE BACKFLOW ASSEMBLY. CONTRACTOR TO PROVIDE PASSING TEST RESULTS ON ALL BACKFLOW PREVENTERS TO LOCAL WATER AUTHORITY.

2 PLUMBING DOMESTIC WATER ISOMETRIC  
SCALE: NO SCALE



3 CLASS A OIL AND SAND INTERCEPTOR  
SCALE: NO SCALE

GREY WOLF ARCHITECTURE

- ARCHITECTURE PLANNING INTERIOR DESIGN
- 1543 champs st. #200 denver, co 80202
- phone: 303.292.9107 fax: 303.292.4297

VH Engineering, LLC  
1825 Lawrence Street Suite 250 Denver, CO 80202  
Phone: 303-296-6900 Fax: 1-888-437-4540  
Job# 5721T-14001

SERVICE STREET AUTOMOTIVE REPAIR  
5721 N Carefree Circle  
COLORADO SPRINGS, CO

ALL DRAWING AND WRITTEN INFORMATION APPEARING HEREIN IS COPYRIGHTED INFORMATION AND SHALL NOT BE DUPLICATED, DISCLOSED, OR OTHERWISE DUPLICATED WITHOUT THE WRITTEN CONSENT OF GREY WOLF ARCHITECTURE

|                |          |
|----------------|----------|
| PROJECT NUMBER | 13-326.5 |
| DRAWN          |          |
| CHECKED        |          |

|                            |            |
|----------------------------|------------|
| ISSUE NOT FOR CONSTRUCTION |            |
| 06.05.14                   | CHECK SET  |
| 09.03.14                   | 99% CD SET |

|                   |                 |
|-------------------|-----------------|
| ISSUE / REVISIONS | PERMIT          |
| 09.10.14          |                 |
| 09.15.14          | REVIEW COMMENTS |

NOTES, DETAILS & ISOMETRICS