

Olga Neuwirth

Spleen

für Baßklarinette solo

1994

Spielpartitur

Sy. 3327

ISMN M-2042-3327-4

RICORDI

Pluviôse, irrité contre la ville entière,
De son urne à grands flots verse un froid ténébreux
Aux pâles habitants du voisin cimetière
Et la mortalité sur les faubourgs brumeux.

Mon chat sur le carreau cherchant une litière
Agite sans repos son corps maigre et galeux;
L'âme d'un vieux poète erre dans la gouttière
Avec la triste voix d'un fantôme frileux.

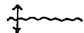

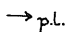
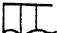
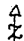


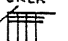
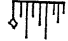
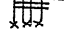
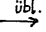

Le bourdon se lamente, et la bûche enfumée
Accompagne en fausset la pendule enrhumée,
Cependant qu'en un jeu plein de sales parfums,

Héritage fatal d'une vieille hydropique,
Le beau valet de cœur et la dame de pique
Causent sinistrement de leurs amours défunts.

(Charles Baudelaire: Fleurs du Mal)

Uraufführung: Tage Neuer Musik in Schwaz / Tirol, 18.9.1994
Solist: Ernesto Molinari

Zeichenerklärung

	Ton fluktuiert in Mikrointervallen
	Halb Ton / halb Luft
	„Pressione labbra“, den Lippendruck allmählich verstärken
	Rhythmisierte Vibrati
MPH	Multiphonic
	Zahnton
S◀	Saugton
□	Nur Luft
	So schnell wie möglich
	Flageolet
	Zungenstöße
	Ins Instrument flüstern
	Klappenschläge ad libitum
	Überblasen
	Klangfarbentriller
I ↗ VII	Obertonglissando
→	Übergang von einer Spieltechnik zu einer anderen
^	Äußerst kurze Pause
◻	Kurze Pause
▼	Slap (Knallton) – offener Slap –

für Ernesto Molinari

circular breathing $\approx 25''$

4 | (1=48)

(dient rein der Korrelation)

f \rightarrow pp

ppp \rightarrow p \rightarrow ppp pp \rightarrow

asynchrone Triller

pp \rightarrow mf \rightarrow pp mf

5 |

Gill-Pfeife

ppp \rightarrow mp

pp \rightarrow f \rightarrow pp

f \rightarrow pp

ppp \rightarrow ppp \rightarrow

f \rightarrow pp ff \rightarrow p \rightarrow ff

(mit dem Ansatz) (verschert)

⊗ = die beiden Ebenen so miteinander verbinden, sodass der Eindruck entsteht, man höre beide "gleichzeitig", als gäbe es - von einem Ton aus - 2 "gleichzeitige" Gliss. Linien.

Handwritten musical score for a single staff. The notation includes various dynamics and performance markings:

- f* < *f* < < > < > < >
- sch* (with a bracketed note)
- T.R.* (Tremolo)
- sfz* (sforzando)
- f* (forte)
- ff* (fortissimo)
- p* (piano)
- ff* (fortissimo)
- pp* (pianissimo)
- Measure numbers: I, VII, VIII
- Duration: $\approx 35''$

Handwritten musical score for a single staff. The notation includes various dynamics and performance markings:

- pp* < *mf* < *ff*
- p* (piano)
- pp* < *ff*
- staccatissimo* (with a bracketed note)
- mvib.* (movimento vibrato)
- ppp* < *p* < *ppp*
- pp* < *mf*
- Measure numbers: I, V

Handwritten musical score for a single staff. The notation includes various dynamics and performance markings:

- 8bassa* (basso)
- vib.* (vibrato)
- pp* < *mf* < *pp* *sfz* *pp*
- pp* < *ff*
- ppp*
- sf* > *p*

Handwritten musical score for a single staff. The notation includes various dynamics and performance markings:

- mf* < *ff*
- sfz* (sforzando)
- ppp* < *p* < *ppp*
- f* (forte)
- ppp* < *mf* < *ppppp*
- Measure numbers: I, V
- Duration: $\approx 10''$
- Markings: *attacca*, *Mobile*

Handwritten musical score for a piece titled "Mabile". The score is written on three staves, each with a treble clef and a key signature of one sharp (F#).

Staff 1 (Top): Labeled "Mabile" and "Basis". It features a wavy line representing a melodic contour. Above the staff, there is a small diagram of a box with a wavy line inside, labeled "Basis". To the right of the staff, there is a measurement of approximately 15 inches ($\approx 15''$) and a vertical line with the number 5.

Staff 2 (Middle): Labeled "Dichte u. Dynamik des Mabile". It features a wavy line representing a melodic contour. Above the staff, there is a measurement of approximately 8 inches ($\approx 8''$) and a vertical line with the number 1.

Staff 3 (Bottom): Labeled "8va -->". It features a wavy line representing a melodic contour. Above the staff, there is a measurement of approximately 15 inches ($\approx 15''$) and a vertical line with the number 5.

Dynamic markings and performance instructions:

- Staff 1:** *ppp* (pianissimo), *sfz* (sforzando), *ppp*.
- Staff 2:** *p* (piano), *sfz*, *pp* (pianissimo), *p*, *pp*, *sfz*.
- Staff 3:** *ppp*, *p*, *mf* (mezzo-forte), *ppp*, *mf*, *ff* (fortissimo).

Performance instructions:

- Staff 1:** "Dichte u. Dynamik des Mabile" (Density and Dynamics of the Mabile).
- Staff 2:** "(Zungenstöße)" (Tongue strokes).

(Bva) --> *ossia:*

pp mf pp ff p ff p ffff

p(poss.)

fff p(poss.)

sich um die eigene Achse drehen ⊕

mehr Brunn (±)

fff

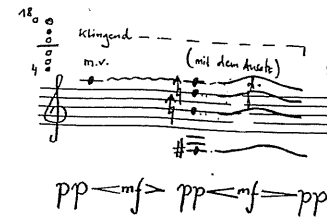
ossia: wenn nicht genau möglich:
annähernder Tonhöhenverlauf zw. a^{'''} - d^{'''}

⊕ = während des drehens immer
weniger Obertöne → bis nur mehr
Grundton

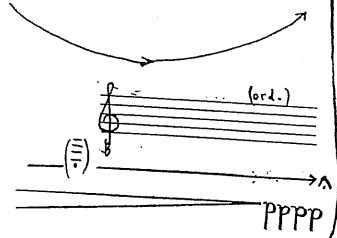
Wild, nervös ~ 1 min.

7

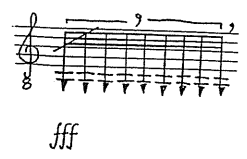
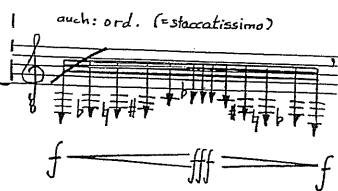
N^{Discantus}



- Glissandi zw. den Obertönen durch Ansatzänderung - unregelmäßige Obertonfluktuation -
- überblasen -



N^{Bassus}



Die Hauptstimme durch die
Nebestimmen unterbrechen.
So dicht wie möglich!

8 (1-48)

Handwritten musical score for "Singtime" by John Cage. The score is written on two staves: a piano staff (bottom) and a vocal staff (top). The piano part includes dynamic markings such as *pp*, *mf*, *f*, *ppp*, *p*, *mp*, and *p.p.* (pianissimo). The vocal part includes performance instructions like "singtime", "m.v." (more vocal), "inspire", "aspirare", and "p.b." (pianissimo). The score is marked with various musical notations, including notes, rests, and dynamic markings.

Handwritten musical score for a single melodic line on a grand staff. The score includes various dynamic markings (mf, p, f, ppp, pp, sfz), articulations (accents, slurs), and performance instructions like "espirare" and "p.l.". The notation features complex rhythms with triplets and sixteenth notes, and includes a key signature change to one flat. The score is numbered "21" at the end.

Handwritten musical score for a piano piece, featuring a single melodic line on a grand staff. The score is divided into four measures, each marked with a large number (2, 3, 4) and a tempo/acceleration marking (acc.). The notation includes various fingerings (e.g., 5, 6, 7), articulation marks (e.g., marcato, ord.), and dynamic markings (e.g., fff, mf, ff, p, pp). The piece concludes with a final measure marked '4' and a double bar line.

Handwritten musical score for a piano piece, featuring a single melodic line on a grand staff. The score is divided into measures with various time signatures (4/4, 3/4, 4/4, 2/4, 5/4) and includes dynamic markings (mf, pp, p, f, ppp, sfz) and articulation (accents, slurs). The notation includes complex rhythmic patterns, such as sixteenth-note runs and triplets, and a final measure with a 'Blaß' (Blaß) marking.

