

# CORNER RECORD

Agency Index

BK 98 PG 74

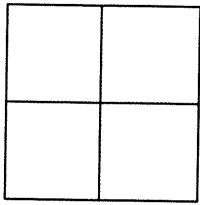
Document Number

CR 10102

City of BERKELEY

County of ALAMEDA, California

Brief Legal Description 2" BRASS DISK MONUMENT LOCATED AT THE INTERSECTION OF DELAWARE ST AND NINTH STREET



## CORNER TYPE

Government Corner ☐ Control ☒  
Meander ☐ Property ☐  
Rancho ☐ Other ☐

Date of Survey 5/11/17

## COORDINATES (Optional)

N. E.

Elevation

Units Metric ☐ U.S. Survey Foot ☒

Horizontal Datum

Zone Epoch Date

Vertical Datum

☐ Complies with Public Resources Code §§8801-8819☐ Complies with Public Resources Code §§8890-8902PLS Act Ref: ☐ 8765(d) ☒ 8771 ☐ 8773 ☐ Other:

Corner/  
Monument: ☒ Left as found ☐ Established ☐ Rebuilt ☒ Pre-Construction  
☐ Found and tagged ☐ Reestablished ☐ Referenced ☐ Post-Construction

Narrative of corner identified and monument as found, set, reset, replaced, or removed:

☒ See sheet #2 for description(s) :

FOUND 2" BRASS DISK WITH PUNCH IN MONUMENT WELL. CITY ID B0542

FOUND AND SET POINTS AS SHOWN ON PAGE 2.

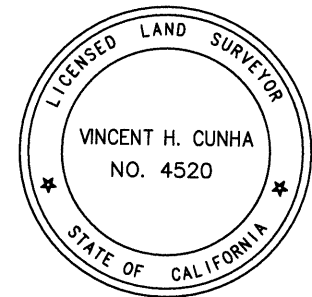
THIS POINT WAS REFERENCED PRIOR TO A CONSTRUCTION PROJECT IN THE VICINITY.

THE TIES SHOWN HEREON ARE FOR THE PURPOSE OF PERPETUATING FOUND MONUMENTATION.  
NO CLAIM IS MADE AS TO THE RELATIONSHIP OF THE POINTS OR LINES SHOWN HEREON TO TRUE  
BOUNDARY LOCATION.

## SURVEYOR'S STATEMENT

This Corner Record was prepared by me or under my direction in conformance with

the Professional Land Surveyors' Act on MAY 19, 2017.

Signed Vincent H. Cunha P.L.S. No. LS 4520  
VINCENT H. CUNHA

## COUNTY SURVEYOR'S STATEMENT

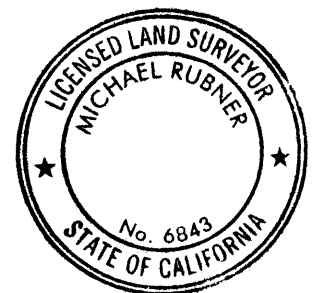
This Corner Record was received 1 JUNE, 2017

and examined and filed 14 AUGUST, 2017.

Signed Michael Rubner P.L.S. or R.C.E. No. 6843

Title COUNTY SURVEYOR

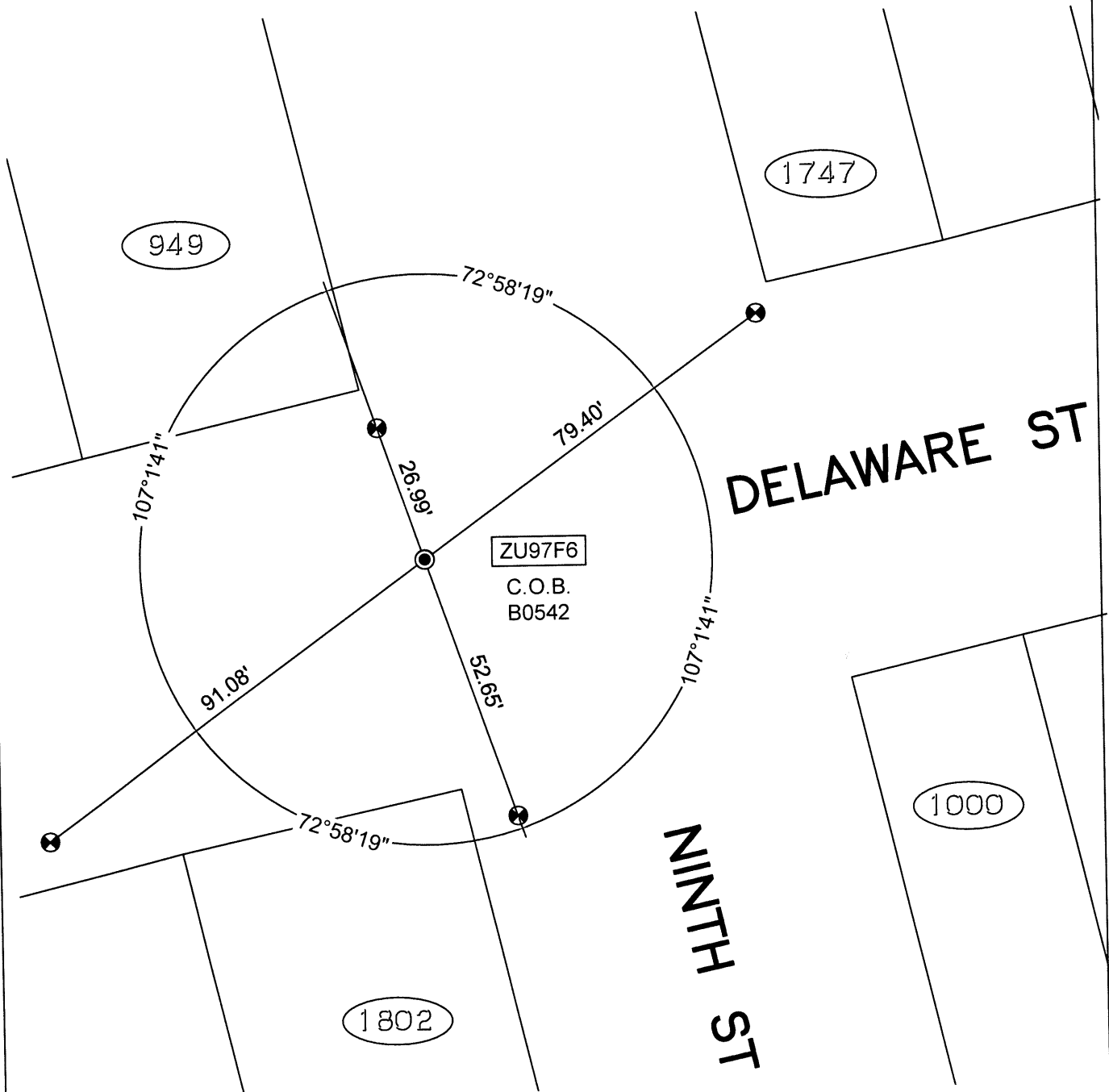
County Surveyor's Comment



SCALE: 1"=30'

**LEGEND**

- FOUND BRASS DISK WITH PUNCH IN MONUMENT WELL
- ⊗ SET CUT CROSS IN WALK
- ✕ SET CUT CROSS IN CURB
- ✕ SET MAG AND SHINER
- SET REBAR & CAP STAMPED "CEI RP"
- AA##A# ALAMEDA COUNTY MONUMENT ID
- 19592 REFERENCE STREET ADDRESS



216010-M-EIGHTH-CR10