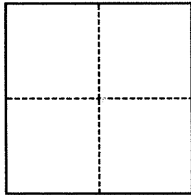


CORNER RECORD

Agency Index BL 97 PL 22
Document Number CR 10058

City of Oakland County of Alameda, California
Brief Legal Description City of Oakland monument, on Peralta Street and 20th Street

CORNER TYPE



- ☐ Government Corner ☒ Control
☐ Meander ☐ Property
☐ Rancho ☐ Other

Date of Survey March 8, 2017

COORDINATES (Optional)

N. 2124321.982 E. 6044426.200
Elevation 8.920
Units ☐ Metric ☒ U.S. Survey Foot
Horizontal Datum NAD 1983
Zone CA 3 Epoch Date 2016.75 SmartNet
Vertical Datum NAVD 1988
☐ Complies with Public Resources Code §§8801-8819
☐ Complies with Public Resources Code §§8890-8902

PLS Act Ref.: ☐ 8765(d) ☒ 8771 ☐ 8773 ☐ Other:
Corner/
Monument: ☒ Left as found ☐ Established ☐ Rebuilt ☒ Pre-Construction
☐ Found and tagged ☐ Reestablished ☐ Referenced ☐ Post-Construction

Narrative of corner identified and monument as found, set, reset, replaced, or removed:

☐ See sheet #2 for description(s):

The City of Oakland, pin monument, is located at the intersection of Peralta Street and 20th Street as shown on the City of Oakland Monument Index Sheet number 236. Data is on file in the City Land Surveyor's Office, City of Oakland, California. In compliance with Section 8771 Professional Land Surveyor's Act, this corner record is being filed PRIOR to street improvement project. The monument is in good condition.

SURVEYOR'S STATEMENT

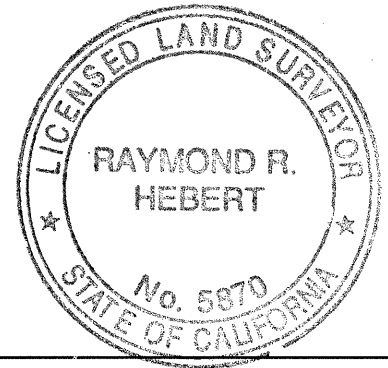
This Corner Record was prepared by me or under my direction in conformance

with the Professional Land Surveyors' Act on 6/30/17

Signed [Signature]

P.L.S. No.

PLS 5870



COUNTY SURVEYOR'S STATEMENT

This Corner Record was received 26 MAY, 2017

and examined and filed 25 JULY, 2017

Signed Michael Rubner P.L.S. or P.C.E. No. 6843

Title COUNTY SURVEYOR

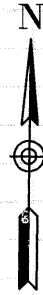
County Surveyor's Comment



LEGEND

- FOUND STANDARD STREET MONUMENT
- x FOUND CUT CROSS
- ⊠ SET PK OR MAG NAIL

AA##A# COUNTY DESIGNATION



SCALE 1"=60'

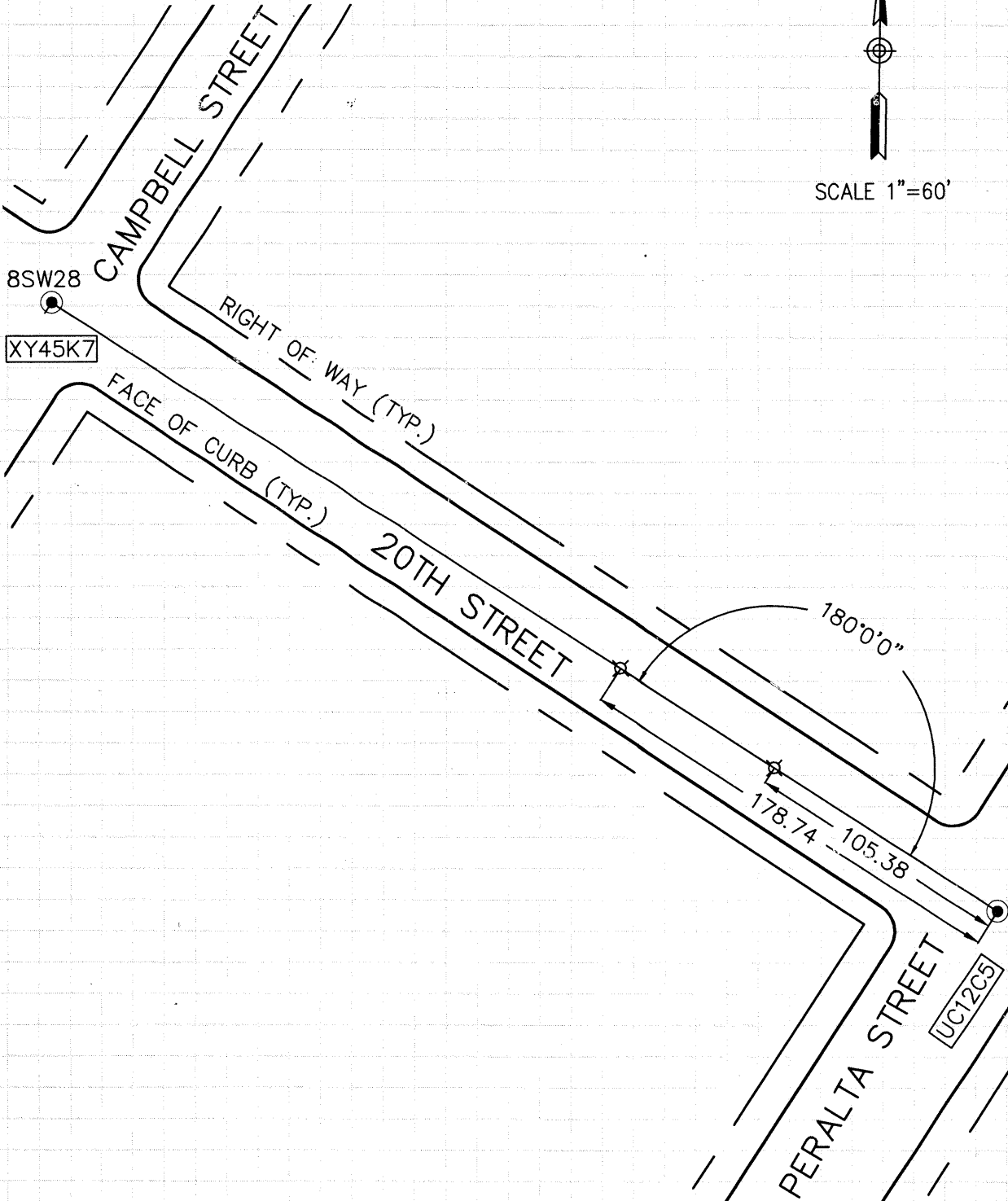


EXHIBIT TO ACCOMPANY CORNER RECORD
BUREAU OF ENGINEERING AND CONSTRUCTION
CITY OF OAKLAND, COUNTY OF ALAMEDA, STATE OF CALIFORNIA