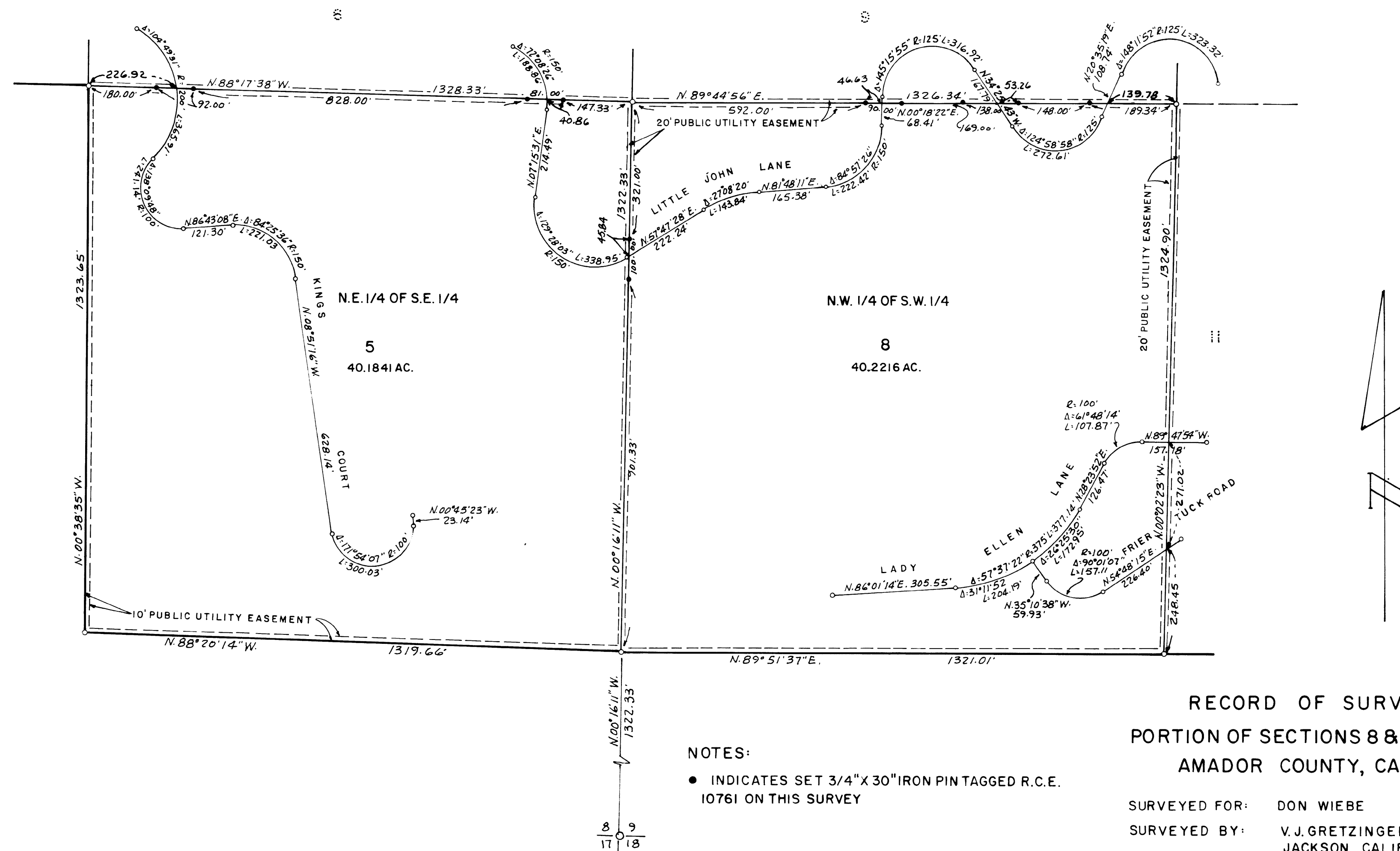


SEE SHEET 2



NOTES:

- INDICATES SET 3/4" X 30" IRON PIN TAGGED R.C.E. 10761 ON THIS SURVEY

RECORD OF SURVEY
PORTION OF SECTIONS 8 & 9, T.7N., R.13E., M.D.M.
AMADOR COUNTY, CALIFORNIA.

SURVEYED FOR: DON WIEBE
SURVEYED BY: V.J. GRETZINGER
JACKSON, CALIF.

SCALE: 1"=200'

JUNE 1970