

CE



Quality Certification
Bureau Inc.
ISO 9001:200
Registered QMS

www.samwontech.com



Your Best Partner!

► Temperature & Humidity Programmable Controller

TEM1880

USB Memory Support

Variable Languages

Excellent Accuracy

Touch Type Interface

PV Graph Display

Your Best Partner

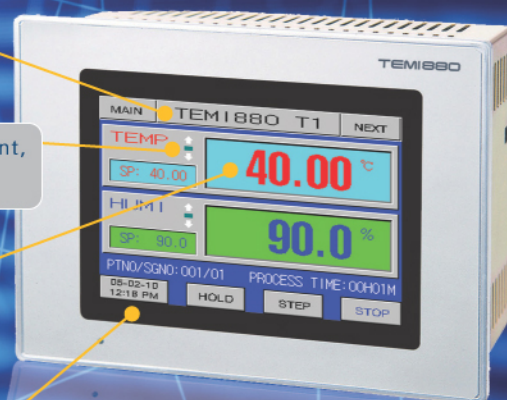
- High Brightness Color Touch Interface
- Dialogue Type Parameter Input
- Korean, English, Chinese
- I/O Relay Board with internal SMPS
 - Simplified Wiring and Saving Prime Cost
- Available both of Pt and DCV Sensors
- Controlling and monitoring Controller with PC
- Freely setting of 37 Type Outputs(Internal Timer)
- USB Memory Function with UDC100(Optional)
 - Replacement Recorder
- Advanced PID Algorithm with built-in Auto-tuning Function
- Powerful Communication and 99 Sets Multi-drop Function
- Excellent Fuzzy Function and ARW Operation
 - External Shock Control and Over-shooting Suppression
- PV Graph Display(0~8 Days)

Edit Function of Program test name

Indicating process value situation(ascent, steadiness, descent) with ramp

Input Resolution-A/D 18 Bits
High Precision Control-1/100℃

Present time and LCD
Power Saving Function

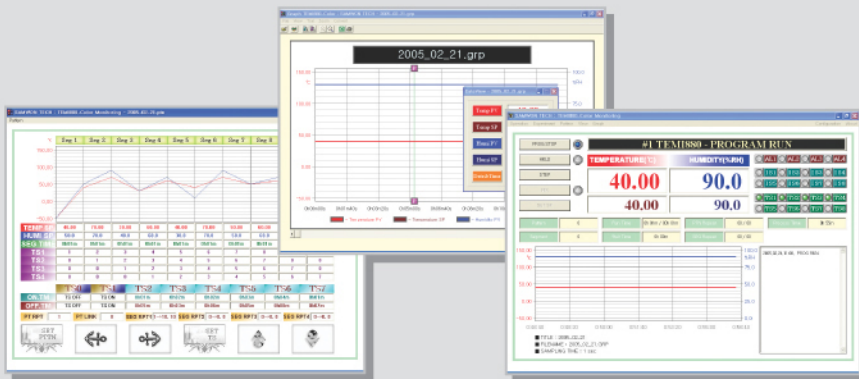


Specifications

Items	Type	TEMI880		TEMI850
Display	LCD	5.7 Inch Color Touch Type		5.7 Inch Mono Touch Type
Program	Pattern / Segment	120 Patterns/1200 Segments		
	Repeat/Additional Function	Entire Repeat:Max.999Times(Infinity Repeat Available), Partial Repeat 4:Max.99Times/Pattern Link and Edit		
Control	PID Group	Temperature, Humidity Group:Each 6 Zones, Temperature Group:3 Zones		
Input	Sensor & Measuring Range	Input Accuracy	Type of Input	Measuring Range
		Temperature (±0.1 % of FS)	Pt1 100 Ω	-50.00 ~ 150.00 ℃
			Pt2 100 Ω	-100.0 ~ 200.0 ℃
		Humidity (±1 % of FS)	DCV	-1.000 ~ 2.000 V(-100.0 ~ 200.0 ℃)
		Pt 100 Ω		-10.0 ~ 110.0 ℃(0.0 ~ 100.0 %RH)
		DCV		1.000 ~ 5.000 V(0.0 ~ 100.0 %RH)
				4 ~ 20mA
Output	Control Output	2 Points(Temperature, Humidity)		
	Type of Output	SSR Output	On voltage: Over 15V DC, Minimum Pulse width:5ms	
		SCR Output	4~20mA DC, Load resistance:Max.600Ω	
Retransmission	Retransmission Output	2 Points(Temperature, Humidity), Output Type:PV,SP,MV		
	Output Signal/Load Resistance	4 ~ 20mA DC / Max. 600Ω		
Contact Input	Type of Input	DI1:RUN/STOP(Fixed), DI2~8>Error Message Names are editable		
	Input Mode	Max. 12V DC, 10mA		
Contact Output	Contact of Output	Max.20 Points(Standard 10 Points, Option 10 Points)		
	Capacity of Contact	Normal Open(Max. 30V DC/5A, 250V AC/5A), Normal Close(Max. 30V DC/1A, 250V AC/2A)		
	Type of Output(Total 37 Points)	Inner Signal:8 Points, Time Signal:4 Points, Alarm Signal:4 Points, On/Off Signal:4 Points Temperature, Humidity Run Signal:2 Points, Temperature, Humidity Up/Soak/Down Signal:6 Points, Drain Signal:1 Point Error Signal:1 Point, PT End Signal:1 Point, 1st Ref Signal:1 Point, 2nd Ref Signal:1 Point		
Power Supply	Power Supply/Insulation Resitance	100~240V AC(±10%), 50/60Hz, Power Consumption:Max.15W/500V DC 20M Ω		
	Lithium Battery/Dielectric Strength	Setting Data Preservation(Min. 10Years)/2000V AC per 1 Minute		
Communication	Protocol	PC-Link, MODBUS(ASCII, RTU)		
	Type of communication	RS232C/RS485- Distance Max. 1.2Km, Max.99 Sets Multi-drop, Speed Max. 9600bps)		
Data Backup	Replacement of Recorder	UDC100(Option):Available General USB Memory Stick(FAT16 Support)		
	Data Storage Function	Program Information & Setting Value Download and Upload, Temperature, Humidity Process Value Storage		

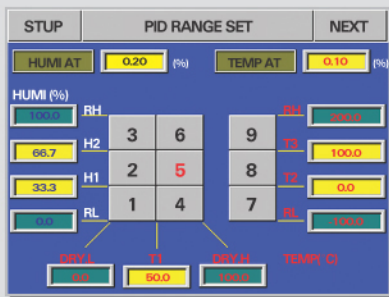
Special Features

► Free Operation Program



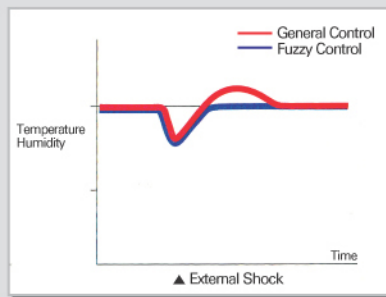
- User can control and monitor TEMI880/850 with free operation program on PC, it is improved convenience and economy.

► Variable 9 PID Groups



- PID 6 groups for temperature and PID 3 groups only for temperature support
- Automatic PID group selection operation as Setting Point
- High precision control with variable PID groups

► Powerful Fuzzy Function



- When it occurs external shock, fuzzy function quickly can stabilize temperature and humidity.

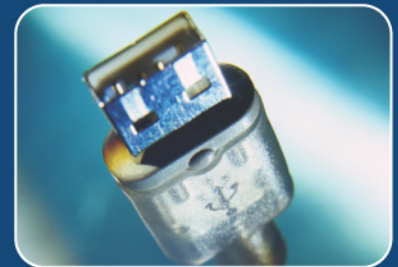
► Multi-drop Function



- PROTOCOL - PC LINK, MODBUS (ASCII, RTU)
- RS232C, Max 1.2Km with RS485, Max 99Sets Multi-drop



USB Memory Storage Device Support



- Temperature(PV, SP), Humidity(PV, SP) Record
- Program and Setting Value Upload/Download

Variable Languages



- Korean, English, Chinese

Excellent Accuracy



- Input Resolution-A/D 18 Bits
- Output Resolution- Retransmission 14 Bits
- High Precision Control-1/100℃

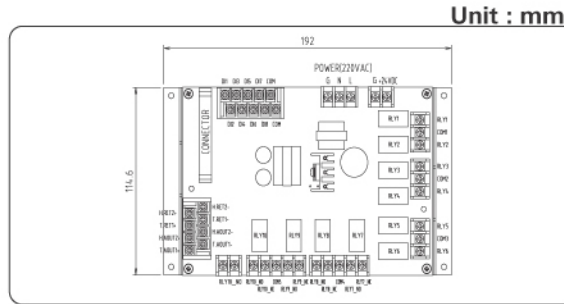
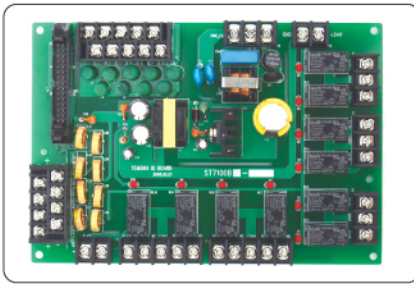
Touch Type Interface



- Easy Use with Touch Screen Interface

Quality parts

• I/O Board

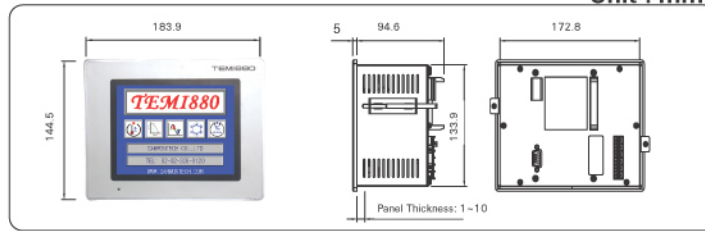


Unit : mm

• Mono Type Model (TEMI850)



• Panel Cutting Size



Unit : mm

• Model And Suffix Code

Model	Type
TEMI880	Color Type
TEMI850	Mono Type

Suffix Code	Description
10	Standard I/O RELAY BOARD (10 Point) & RS232C
11	Standard I/O RELAY BOARD (10 Point) & RS485
20	Standard (10 Point) + Additional I/O RELAY BOARD (10 Point) & RS232C
21	Standard (10 Point) + Additional I/O RELAY BOARD (10 Point) & RS485

Option	Description
UDC	USB Memory Storage Device

► Standard Model Order Example: TEMI880-10

• Application Products



Model	UDC100 (USB Storage Device)
Item	Description
Dimension	73.1 x 28.1 x 83.5 mm, 145 g
Power Supply	(DC5V, 150mA)
Speed	19200 bps (Max)
Connector	TEMI Body : Terminal Block UDC100 Body : Terminal Block
Detail	REC/STS LED, RESET Switch
Specifications	USB Socket Memory Stick (FAT16 Support)



Model	CV1 (RS232C to RS422/485 Converter)
Item	Description
Dimension	43.8 x 23.8 x 79.6 mm, 112 g
Power Supply	Adaptor (DC9V, 300mA)
Communication	Asynchronous Method Serial Communication
Speed	115.2 Kbps(Max)
Distance	1.2Km(Max)
Connector	RS232C : D-Sub Connector(9Pin, Female) RS422/RS485 : Terminal Block
Detail	PWR, RTS, RXD, TXD LED 2Lines(RS485), 4Lines(RS422) Used RTS/DTR Slide Switch Termination Resistance(220 Ω) Include, 2500V Isolation



Model	H290B (Electronic Humidity Sensor)
Item	Description
Dimension	PCB : 92mm X 72mm PROB : 270mm Cable : About 1.5m
Condition	PCB : -5~+50° C PROB : -50~+200° C
Power Supply	24V DC
Scaling Range	0~100% RH
Output	4~20mA
Operating Range	-50~+200° C



Model	SPS24 (Switching Power Supply)
Item	Description
Input	85~250V AC, 50/60Hz
Output	Voltage : 24V DC, 0.8A Ripple : Max. 240mVp-p
Detail	Input-Output : 1500V AC/Minute
Specifications	500V DC100M Ω (At Room Temp & Humi) Operating Condition:-10~+50℃, 20~90% RH(Non Condensing) Storage Condition : -20~+70℃, 20~90% RH(Non Condensing) Vibration:10~105Hz at 0.5G, 30Minutes along X,Y and Z Axis