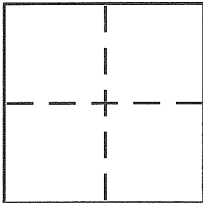


BK 29 Pg 38
Document Number CR 3323

CORNER RECORD

City of OAKLAND County of ALAMEDA, California

Brief Legal Description LOTS 466 & 467 FORESTLAND EXTENSION (4 M 90)



CORNER TYPE

Government Corner ☐ Control ☐
Meander ☐ Property ☒
Rancho ☐ Other ☐
Date of Survey MARCH 22, 2008

COORDINATES (Optional)

N. _____
E. _____
Zone _____ NAD27 ☐ NAD83 ☐
NAD83 Epoch _____
Elev. _____
Vert. Datum: NGVD29 ☐ NAVD88 ☐
Meas. Units: Metric ☐ Imperial ☐

Corner - Left as found ☐ Found and tagged ☐ Established ☒ Reestablished ☐ Rebuilt ☐

Identification and type of corner found: Evidence used to identify or procedure used to establish or reestablish the corner:

FOUND CONCRETE MONUMENT PER (4 M 90)

A description of the physical condition of the monument as found and as set or reset:

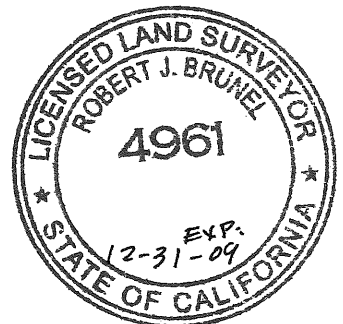
SET 5/8" REBAR WITH PLASTIC CAP, LS 4961
SET P.K. NAIL WITH BRASS TAG, LS 4961
SET 2" HUB WITH BRASS TAG, LS 4961

SURVEYOR'S STATEMENT

This Corner Record was prepared by me or under my direction in conformance with

the Land Surveyor's Act on APRIL 2 2008

Signed Robert J. Brunel P.L.S. or R.C.E. No. 4961



COUNTY SURVEYOR'S STATEMENT

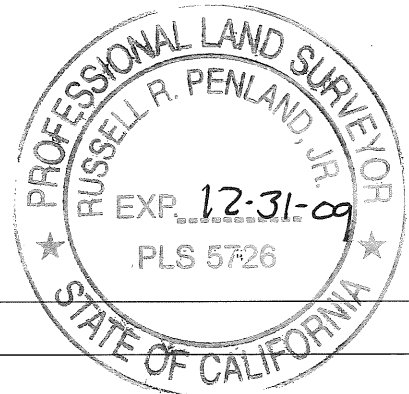
This Corner Record was received 4-9-08

and examined and filed 5-7-08

Signed Russell R. Penland, Jr. P.L.S. or R.C.E. No. 5726

Title COUNTY SURVEYOR

County Surveyor's Comment _____



LEGEND

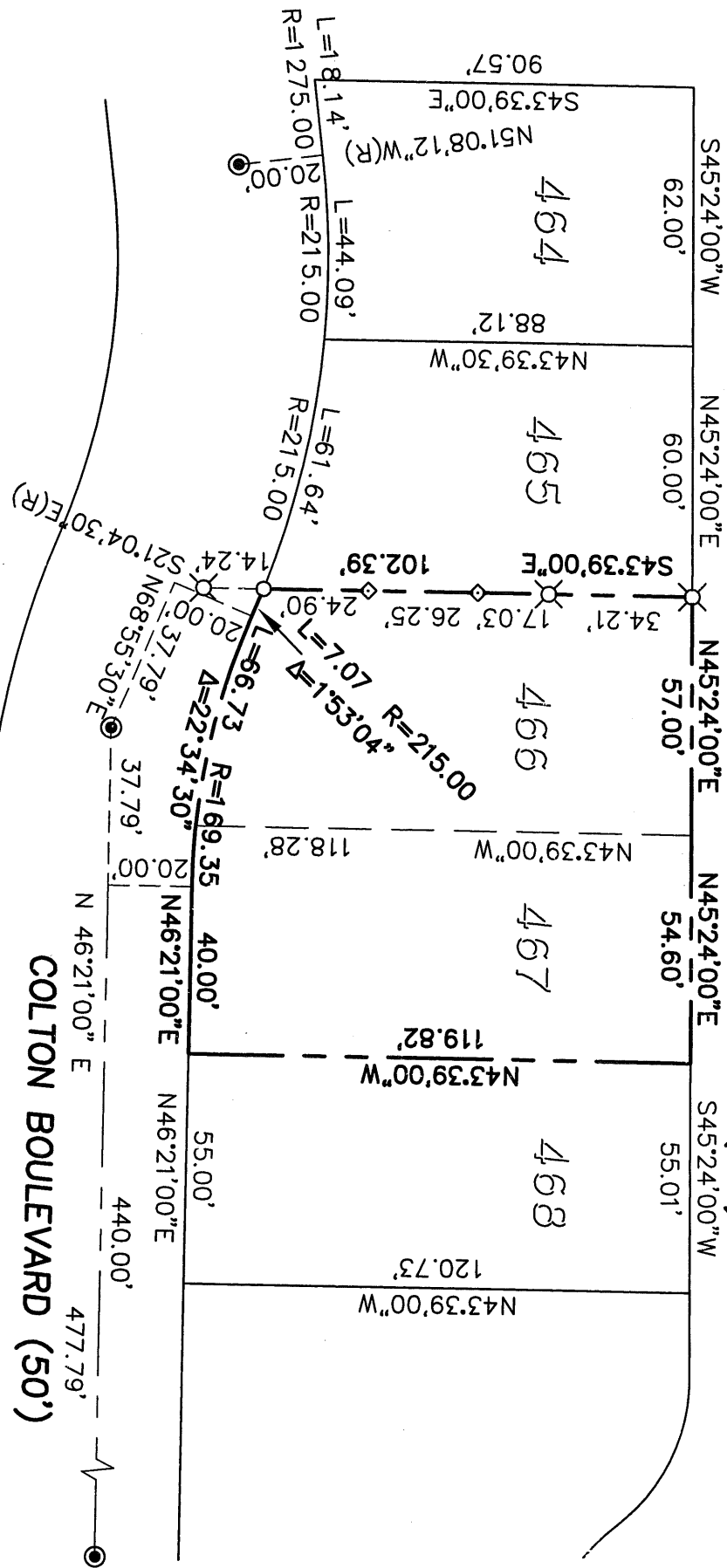
- FOUND CONCRETE MONUMENT PER (4 M 90)
- SET 5/8" REBAR WITH PLASTIC CAP, LS 4961
- SET P.K. NAIL WITH BRASS TAG, LS 4961
- ◇ SET 2" HUB WITH BRASS TAG, LS 4961



CORNER RECORD

LOTS 466 AND 467
 FORESTLAND EXTENSION (4 M 90-93)
 CITY OF OAKLAND, COUNTY OF ALAMEDA, CALIFORNIA
 MARCH 22, 2008 SCALE: 1" = 40'

LODGE COURT (20')



MONTCLAIR LAND SURVEYING
 ROBERT J. BRUNEL - LICENSED LAND SURVEYOR
 OAKLAND, CALIFORNIA