

# RECORD of SURVEY No. 32-44

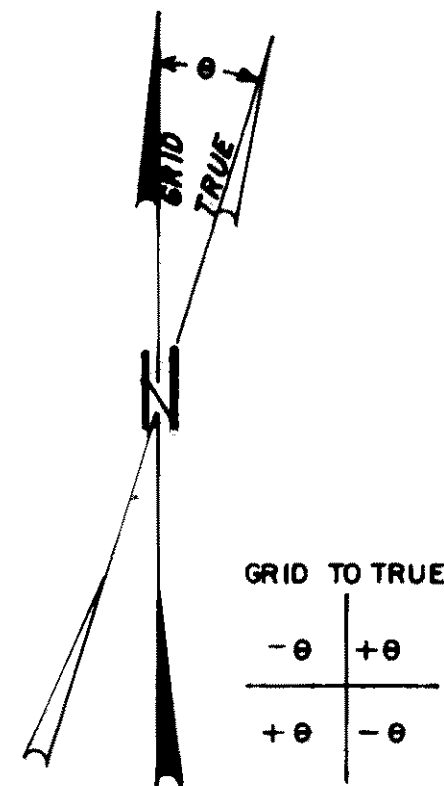
Portions of

Sections: 1, 2, 12, & 13, T.4 N., R.24 E; 4, 5, 6, 7, & 18, T.4 N., R.25 E;  
13, 24, 25, 35, & 36, T.5 N., R.24 E; 18, 19, 30, 31, 32, & 33, T.5 N., R.25 E, M.D.M.

COUNTY OF MONO, CALIFORNIA

James Nicklos (LS3848) & Associates

June 1992



## BASIS OF BEARINGS

THE MERIDIAN OF THIS SURVEY IS GRID NORTH FROM CALIFORNIA COORDINATE SYSTEM ZONE III, NAD 83 BASED ON A LINE BETWEEN: BM 6496 (U.S.G.S.) AND BRIDGEPORT (U.S.C. & G.S.). DISTANCES IN THIS SURVEY ARE GRID, DIVIDE BY COMBINED GRID FACTOR 0.9996777 TO OBTAIN GROUND DISTANCE.

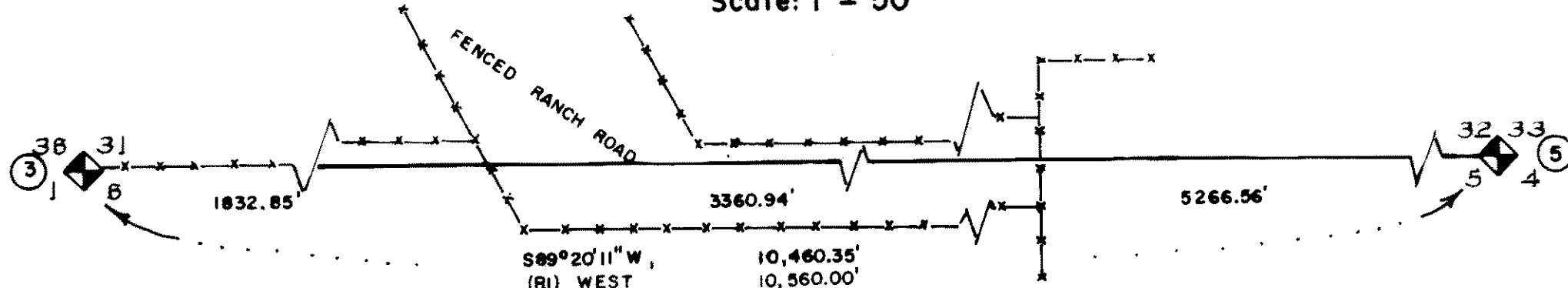
REFERENCES ARE BASED ON TRUE NORTH AND GROUND DISTANCE.

## REFERENCES

- (R1) Government Field Notes, Von Schmidt, 1857
- (R2) " " " J. G. Thompson, 1877
- (R3) " " " Benson & Glover, 1874
- (R4) IRS 19, Owens (RCE 1474), 4-24-75
- (R5) IRS 71, Rice (RCE 30029), 9-15-81
- (R6) 3 PM 4, " " 11-12-82
- (R7) 3 PM 5, " " 11-12-82
- (R8) RW Record Map, Cal-Trans, Dist. 9, Mono Co, Rte 23, Sh 8 of 21, 1933
- (R9) " " " Sh 1 of 1, 1954
- (R10) MB 49, Creed (RE 5521), 8-01-55
- (R11) 7 MB 11, Reid (RCE 7522), 11-12-70
- (R12) 7 MB 34, Gentry (RCE 19406), 6-14-71
- (R13) IRS 17, Gorton (RCE 20930), 9-19-74
- (R14) IRS 50, Longford (RCE 2704), 4-11-80
- (R15) IRS 82, " " 5-26-82 (Amends R-14)
- (R16) 2 PM 87, Hodson (LS 3670), 12-29-81
- (R17) 4 PM 72, Laverly (LS 4587), 2-6-92
- (R18) 2 RS 51, Longford (LS 5149), 4-5-89

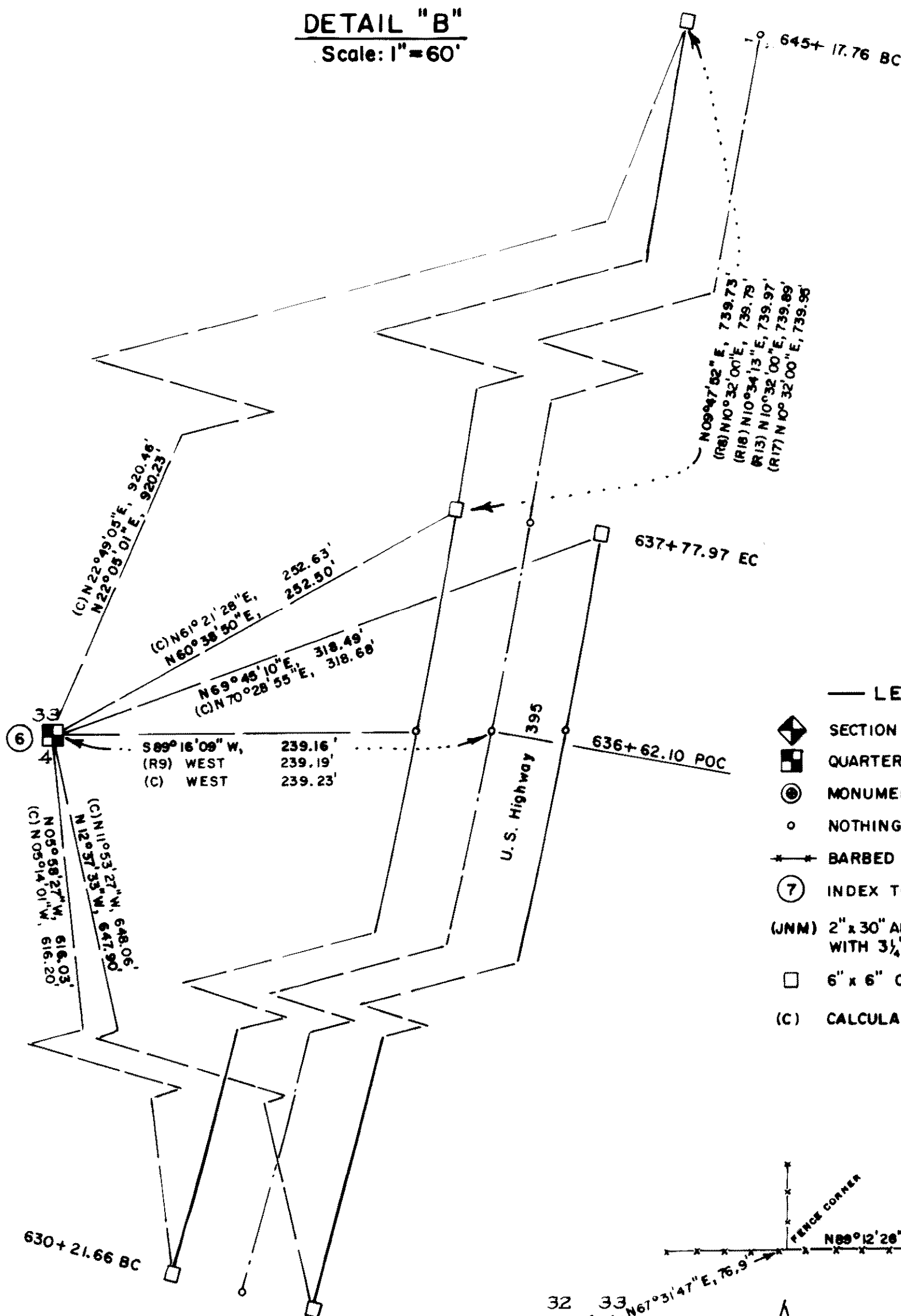
### DETAIL "A"

Scale: 1" = 50'



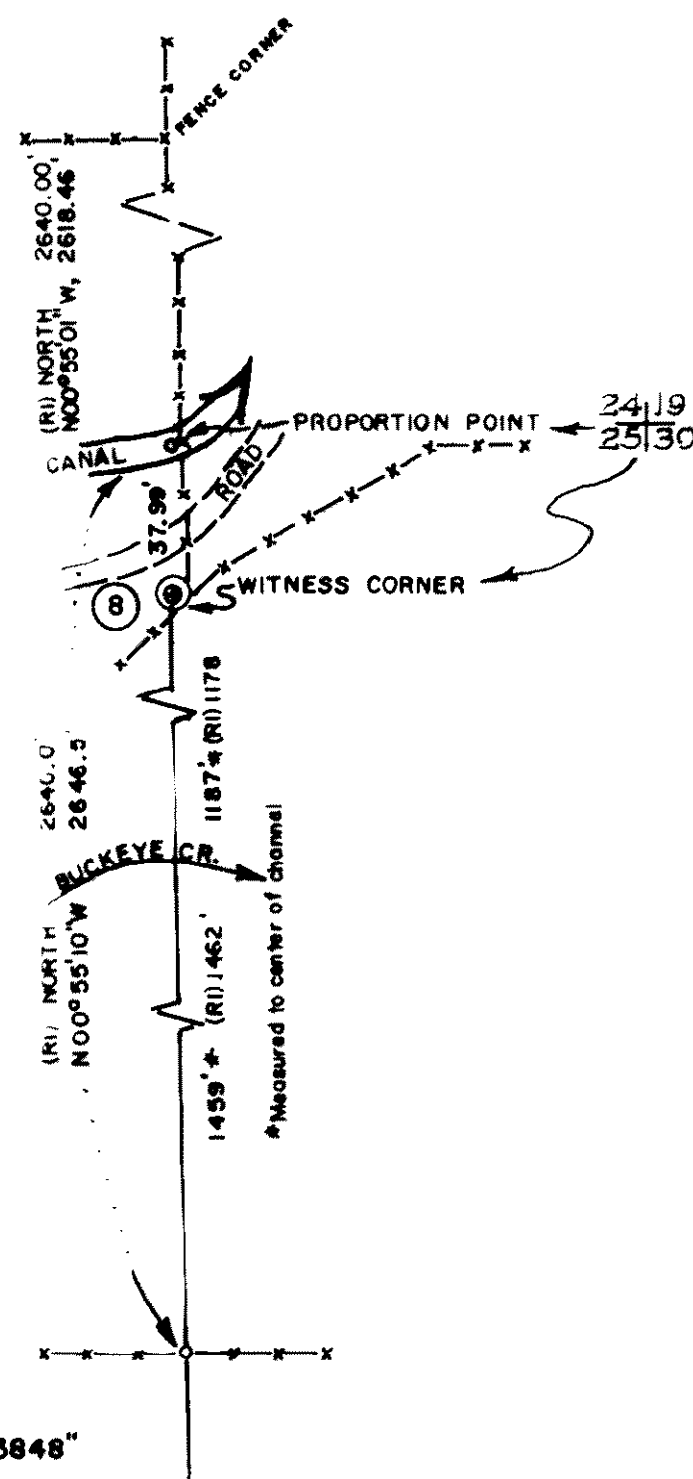
### DETAIL "B"

Scale: 1" = 60'



### DETAIL "C"

No Scale

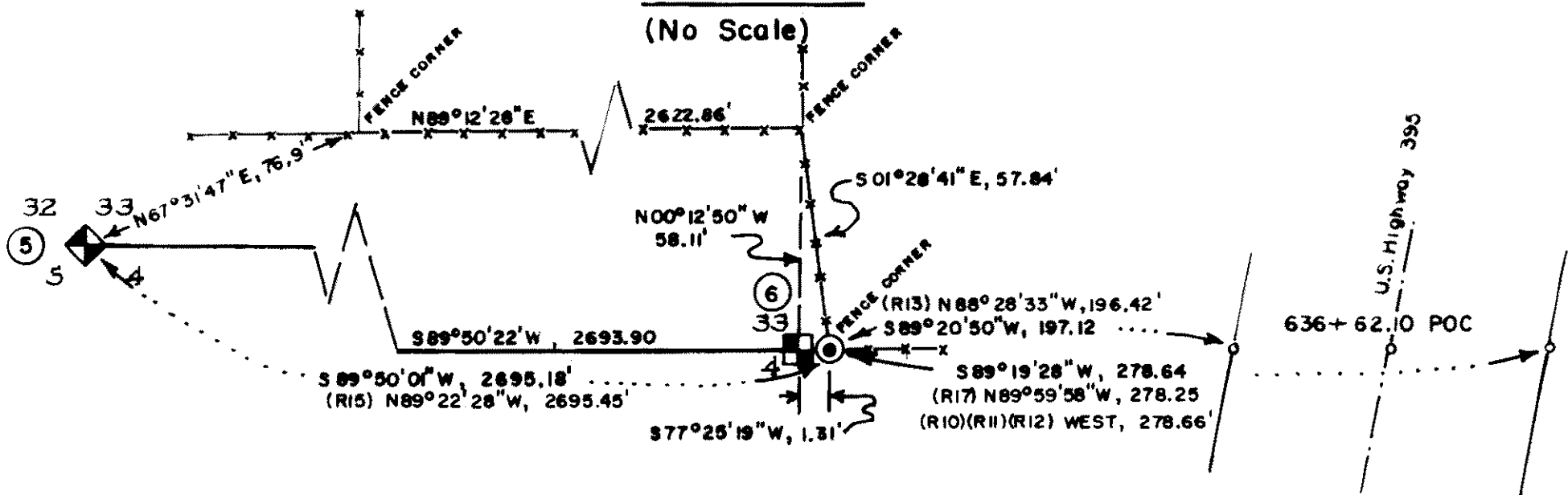


## LEGEND

- ◆ SECTION CORNER, (JNM) THIS SURVEY
- QUARTER CORNER, (JNM) THIS SURVEY
- MONUMENT AS DESCRIBED
- NOTHING FOUND, NOTHING SET
- BARBED WIRE FENCE
- ⑦ INDEX TO MONUMENT DESCRIPTIONS, SHEET 1
- (JNM) 2" x 30" ALUMINUM-MAGNETIC SURVEY MONUMENT WITH 3/4" CAP WITH FORGED "JAMES NICKLOS-LS3848"
- 6" x 6" CONCRETE HIGHWAY RW MONUMENT
- (C) CALCULATED FROM (R8)

### DETAIL "D"

(No Scale)



NOTE: Record highway maps based on true north and ground distance were rotated to grid about 645+17.76 (40' W) to 630+21.66 (40' E).

*P. S. Nicklos & Associates*