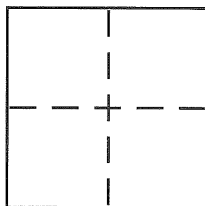


**CORNER RECORD**Document Number CR5463City of BERKELEYCounty of ALAMEDA, CaliforniaBrief Legal Description CITY MONUMENT 130008**CORNER TYPE**

Government Corner ☐ Control ☒  
 Meander ☐ Property ☐  
 Rancho ☐ Other ☐  
 Date of Survey MARCH 28, 2013

**COORDINATES (Optional)**

N. \_\_\_\_\_  
 E. \_\_\_\_\_  
 Zone \_\_\_\_\_ NAD27 ☐ NAD83 ☐  
 NAD83 Epoch \_\_\_\_\_  
 Elev. \_\_\_\_\_  
 Vert. Datum: NGVD29 ☐ NAVD88 ☐  
 Meas. Units: Metric ☐ Imperial ☐

Corner – Left as found ☒ Found and tagged ☐ Established ☐ Reestablished ☐ Rebuilt ☐

Identification and type of corner found: Evidence used to identify or procedure used to establish or reestablish the corner:

**SEE OTHER SIDE**

In compliance with Section 8771 of the Professional Land Surveyors' Act, this corner record is being filed to ESTABLISH the position of an existing monument PRIOR to street or highway construction.

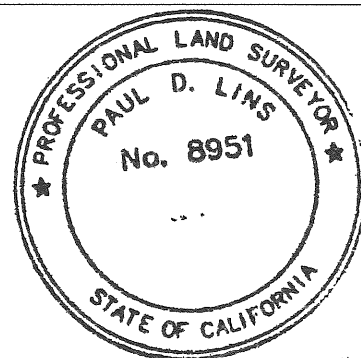
A description of the physical condition of the monument as found and as set or reset: \_\_\_\_\_

**SEE OTHER SIDE**

**SURVEYOR'S STATEMENT**

This Corner Record was prepared by me or under my direction in conformance with the Land Surveyor's Act on APRIL 4 2013

Signed *Paul D. Lins* P.L.S. or R.C.E. No. 8951

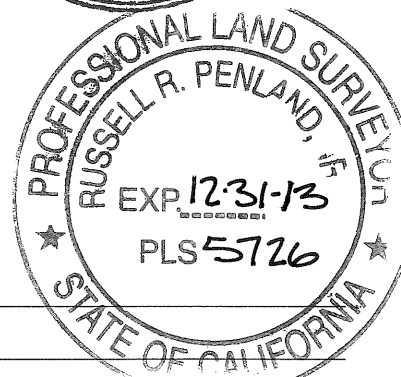
**COUNTY SURVEYOR'S STATEMENT**

This Corner Record was received 4-8-2013  
 and examined and filed 8-5-13

Signed *Russell R. Penland* P.L.S. or R.C.E. No. 5726

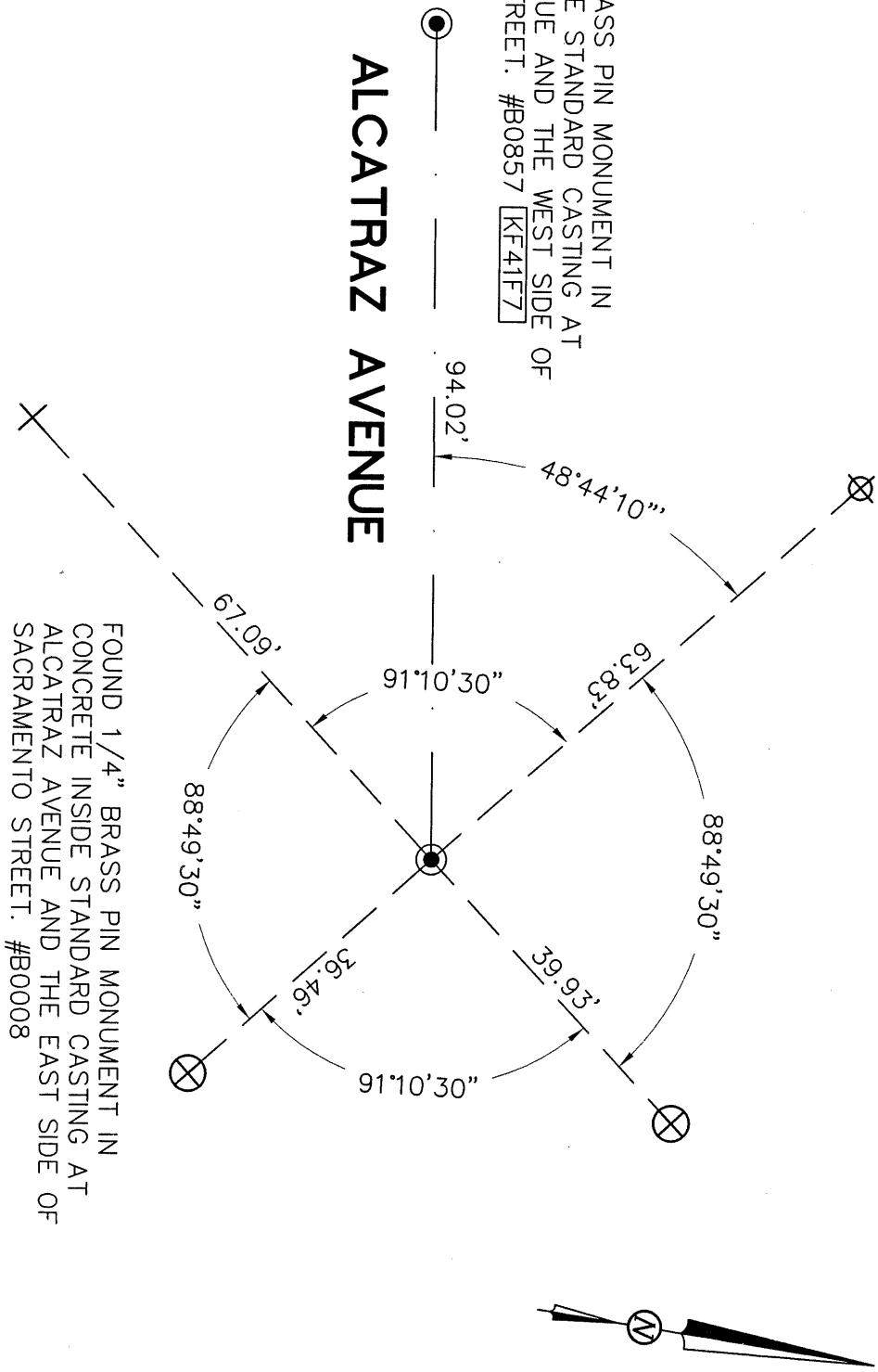
Title COUNTY SURVEYOR

County Surveyor's Comment \_\_\_\_\_



FOUND 1/4" BRASS PIN MONUMENT IN  
CONCRETE INSIDE STANDARD CASTING AT  
ALCATRAZ AVENUE AND THE WEST SIDE OF  
SACRAMENTO STREET. #B0857 [KF41F7]

# ALCATRAZ AVENUE



## LEGEND

- FOUND CITY MONUMENT AS NOTED
- + CUT CROSS IN CONCRETE CURB
- ⊕ CUT CROSS IN CONCRETE SIDEWALK
- ⊗ CUT CROSS IN CONCRETE CENTER ISLAND
- [AA##A#] ALAMEDA COUNTY MONUMENT ID

## CORNER RECORD

TO REFERENCE MONUMENT B0008  
AT ALCATRAZ AVENUE  
AND THE EAST SIDE OF SACRAMENTO STREET  
CITY OF BERKELEY, COUNTY OF ALAMEDA, CALIFORNIA  
MARCH 28, 2013  
SCALE: 1"=20'