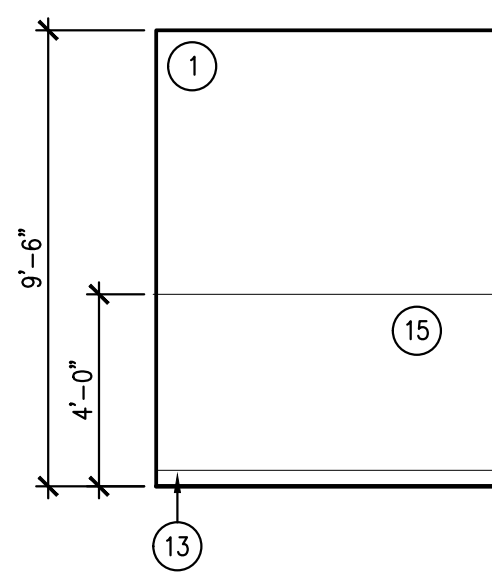
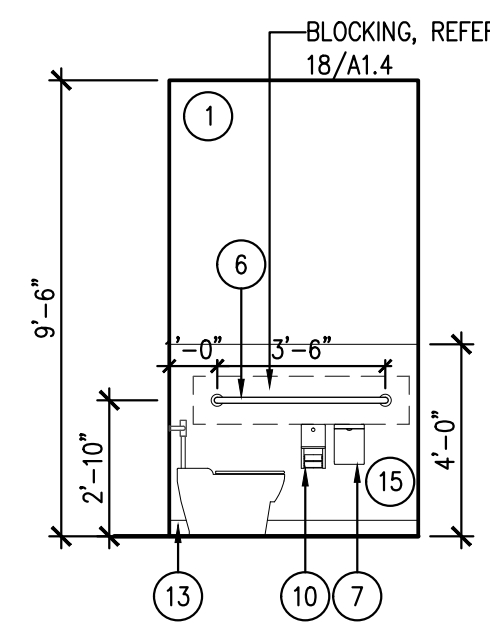


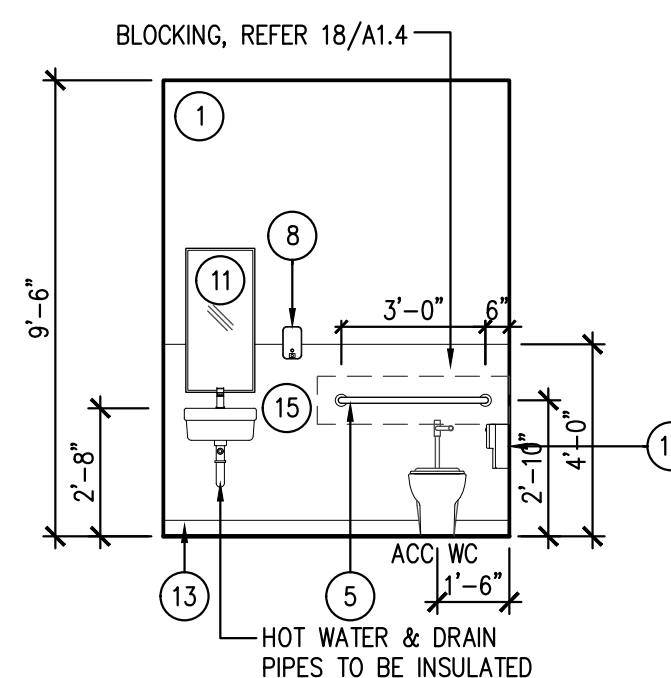
1 INTERIOR ELEVATION
SCALE: 1/4" = 1'-0"



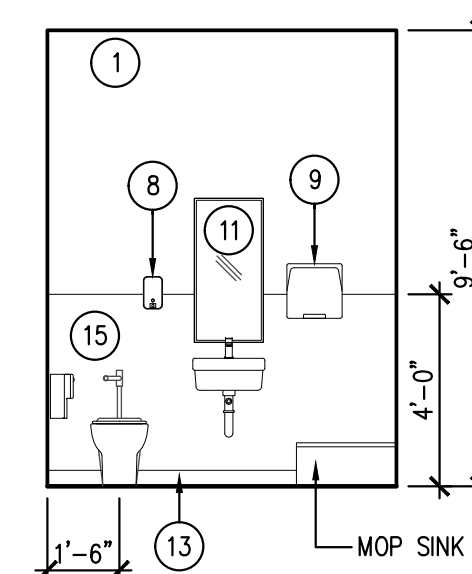
2 INTERIOR ELEVATION
SCALE: 1/4" = 1'-0"



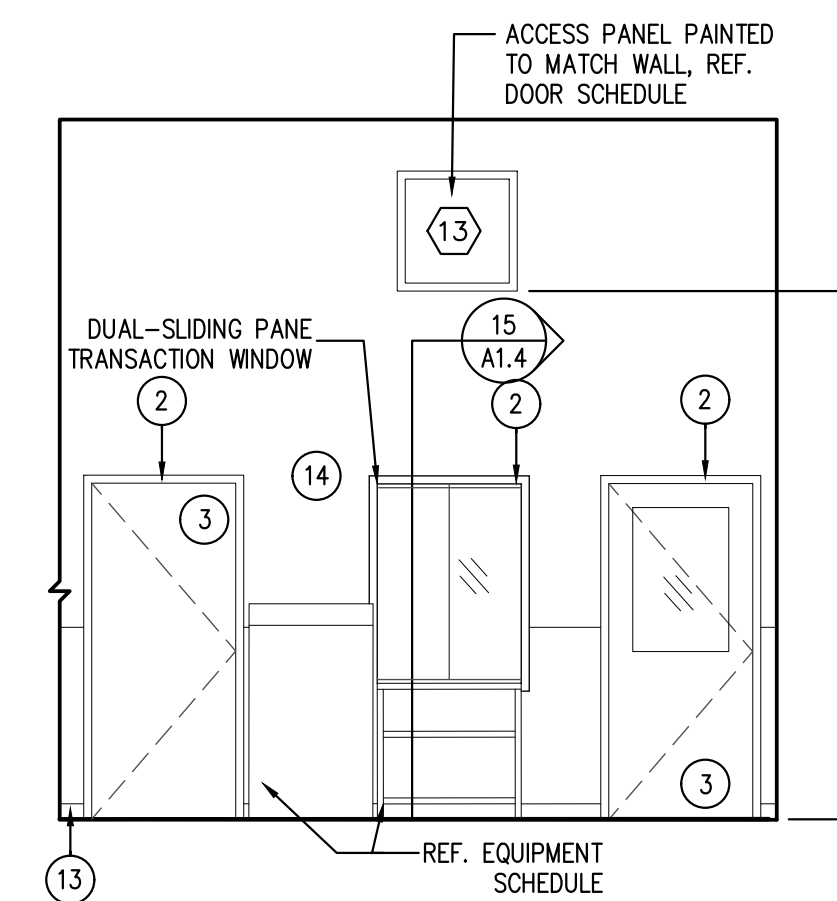
3 INTERIOR ELEVATION



4 INTERIOR ELEVATION



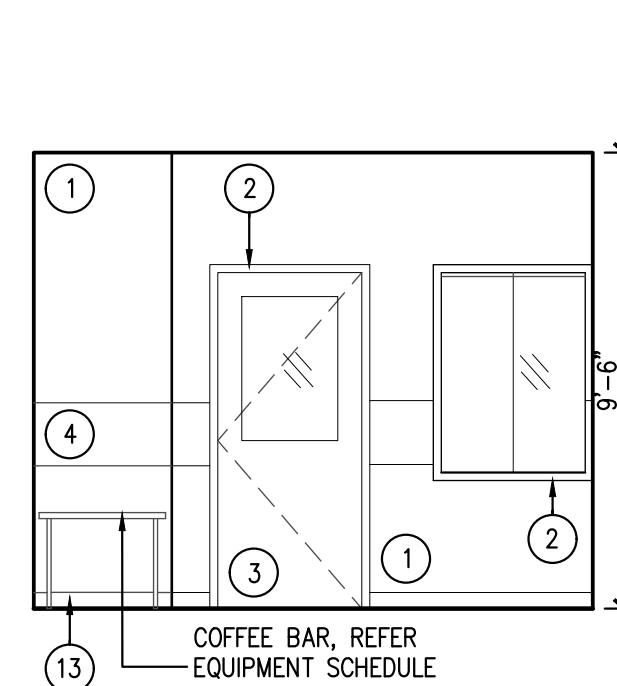
5 INTERIOR ELEVATION
SCALE: 1/4" = 1'-0"



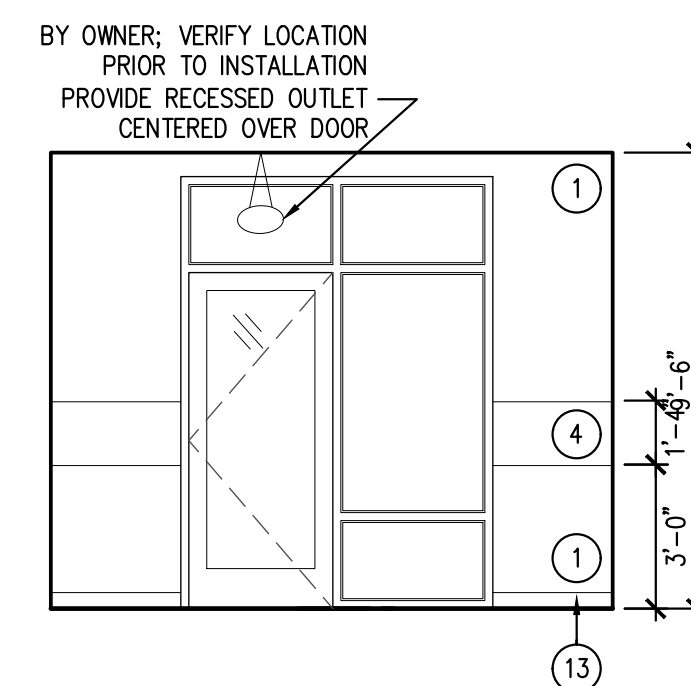
6 INTERIOR ELEVATION

- ### INTERIOR FINISH LEGEND

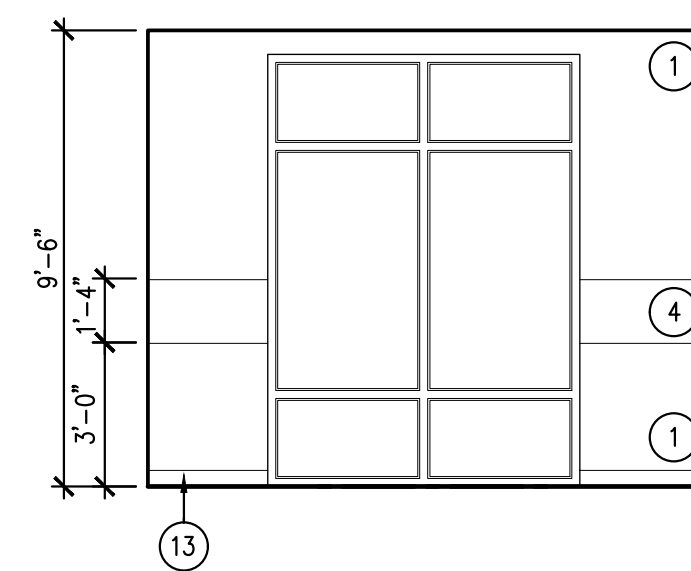
- (1) PAINTED WALL, REFER A.1.1
COLOR: SW 6234 – UNCERTAIN GRAY
- (2) PAINTED INTERIOR TRIM
COLOR: SW 6234 – UNCERTAIN GRAY
- (3) PAINTED DOOR
COLOR: SW 6234 – UNCERTAIN GRAY
- (4) PAINTED WALL, REFER A.1.1
COLOR: SW 9149 – INKY BLUE
- (5) 36" GRAB BAR: BOBBICK B-6806 x 36
INSTALL SOLID BLOCKING
- (5A) NOT USED
- (6) 42" BRAB BAR: BOBBICK B-6806 x 42
INSTALL SOLID BLOCKING FOR GRAB BARS
- (7) TOILET SEAT-COVER DISPENSER: BOBBICK B-221
- (8) SOAP DISPENSER: BOBBICK B-21111
- (9) PAPER TOWEL DISPENSER: BOBBICK B-262
- (10) TOILET PAPER DISPENSER: BOBBICK B-2888
SURFACE MOUNTED DUAL
- (11) MIRROR: BOBBICK B-165 SURFACE MOUNTED
WITH STAINLESS STEEL CHANNEL FRAME
- (12) NOT USED
- (13) 6" COVE BASE
COLOR: JOHNSONITE 21 PLATINUM
- (14) PAINTED PLYWOOD, REFER A.1.1
COLOR: SW 6234 – UNCERTAIN GRAY
- (15) TEXTURED WHITE FRP



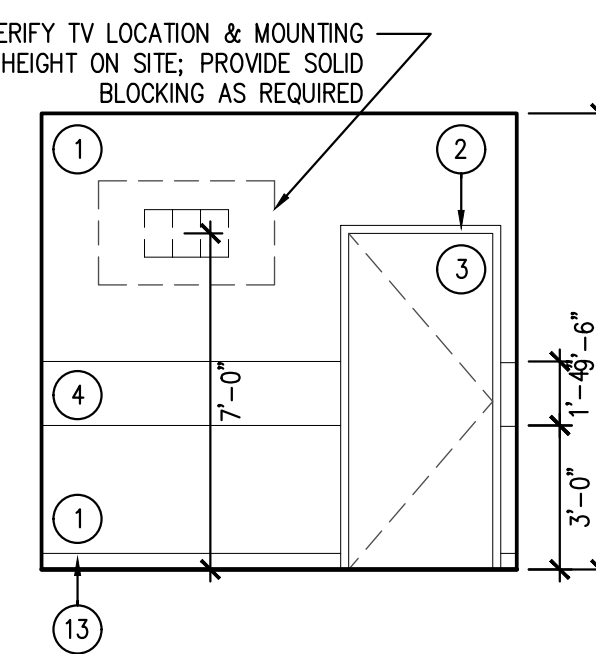
7 INTERIOR ELEVATION
SCALE: 1/4" = 1'-0"



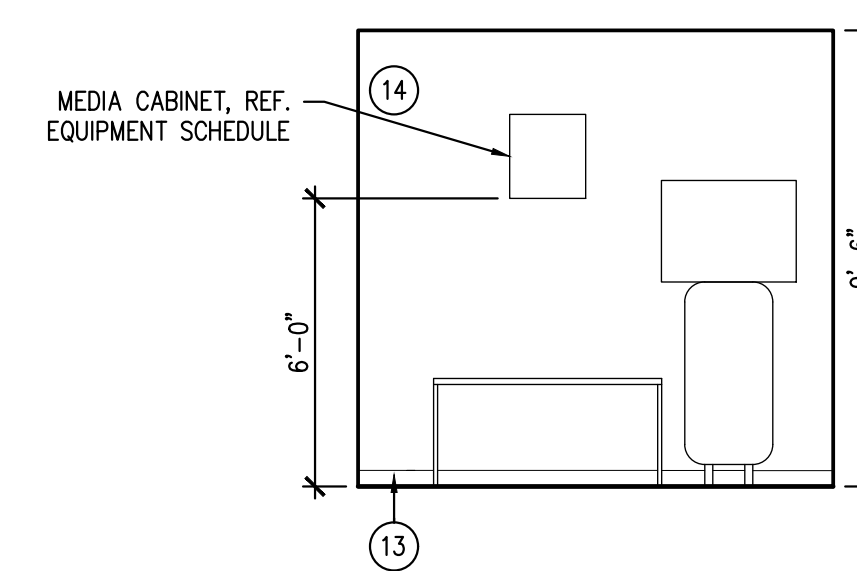
8 INTERIOR ELEVATION
SCALE: 1/4" = 1'-0"



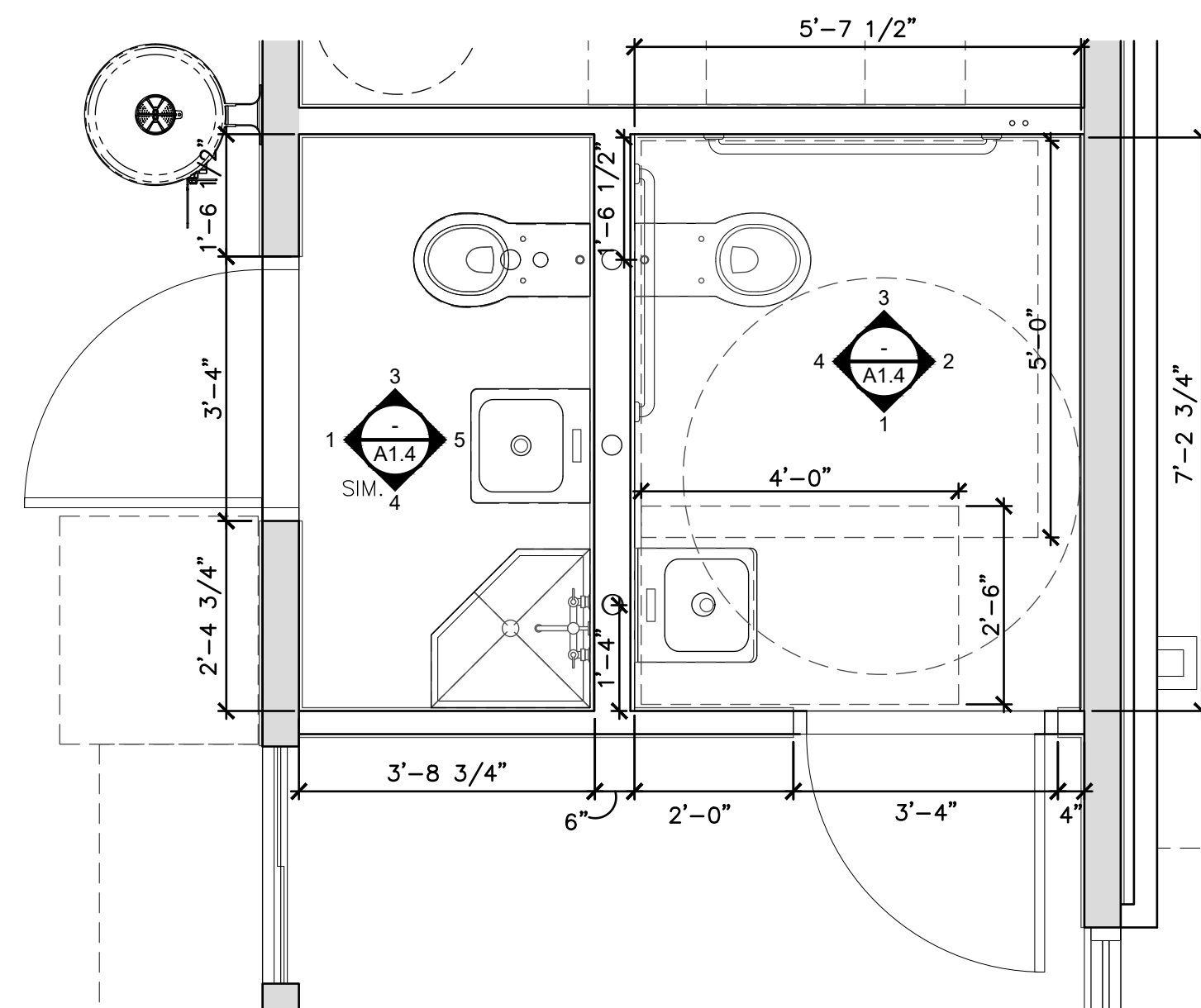
9 INTERIOR ELEVATION
SCALE: 1/4" = 1'-0"



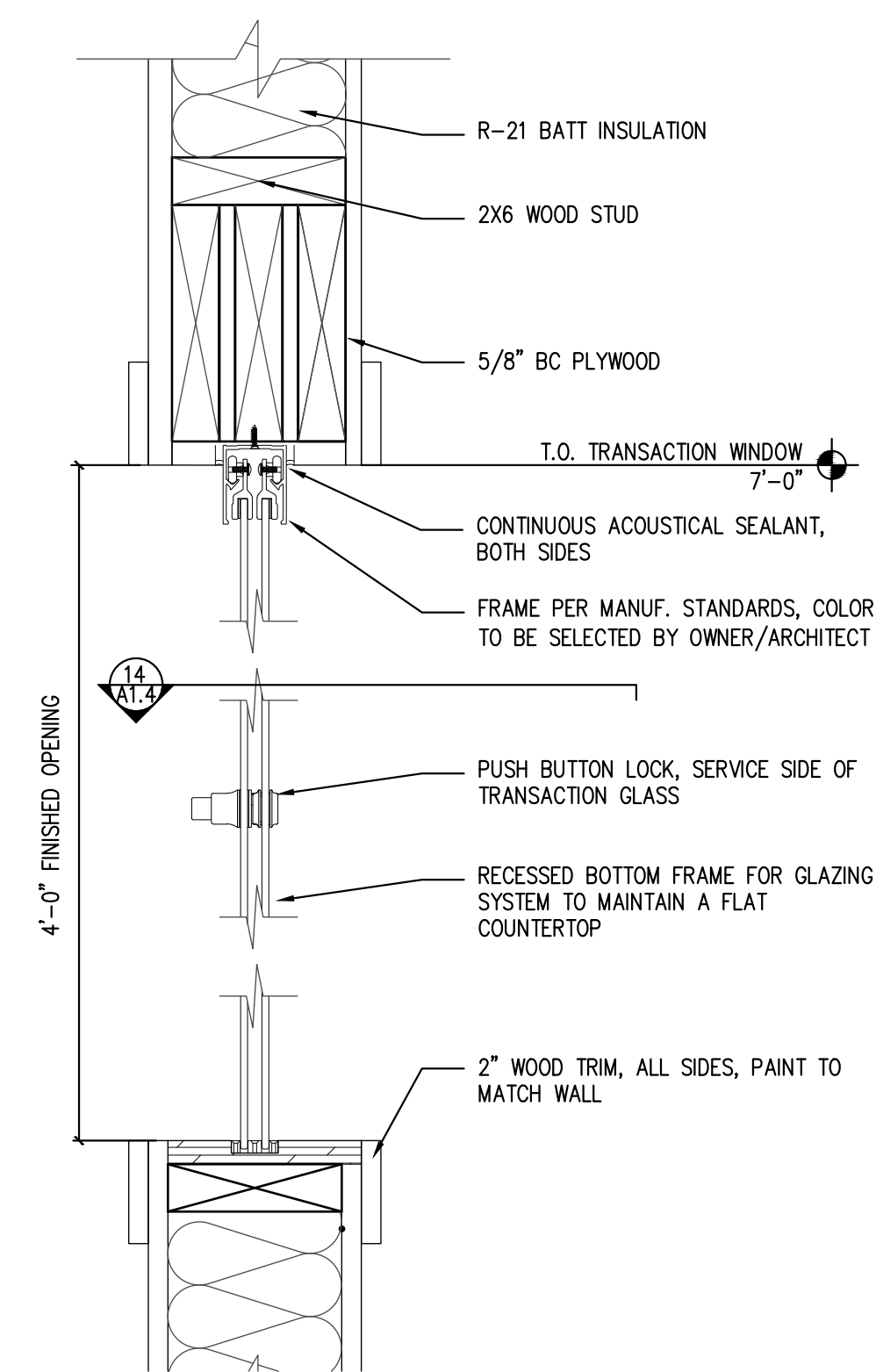
10 INTERIOR ELEVATION
SCALE: 1/4" = 1'-0"



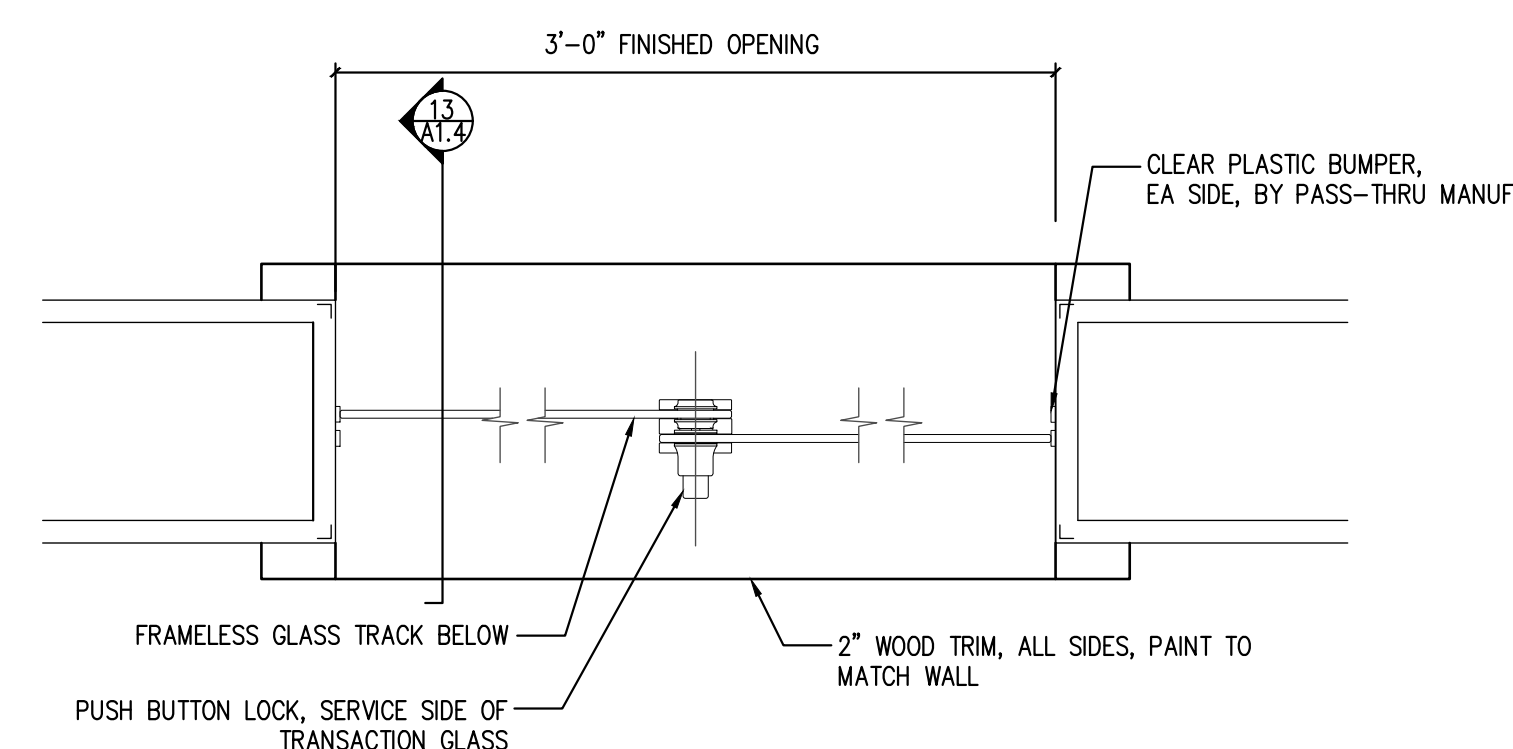
11 INTERIOR ELEVATION
SCALE: 1/4" = 1'-0"



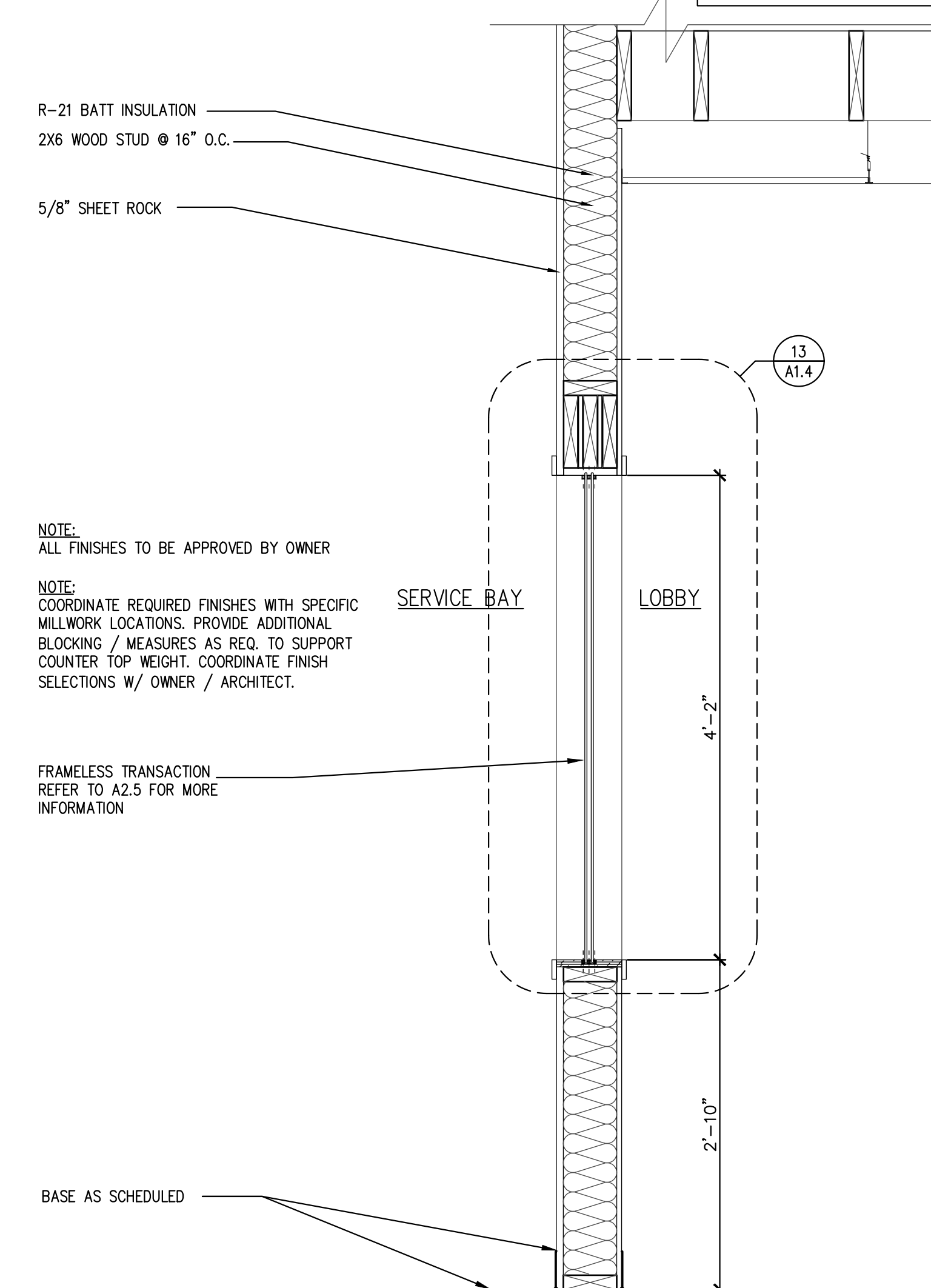
12 ENLARGED RESTROOM PLAN
SCALE: 1/2" = 1'-0"



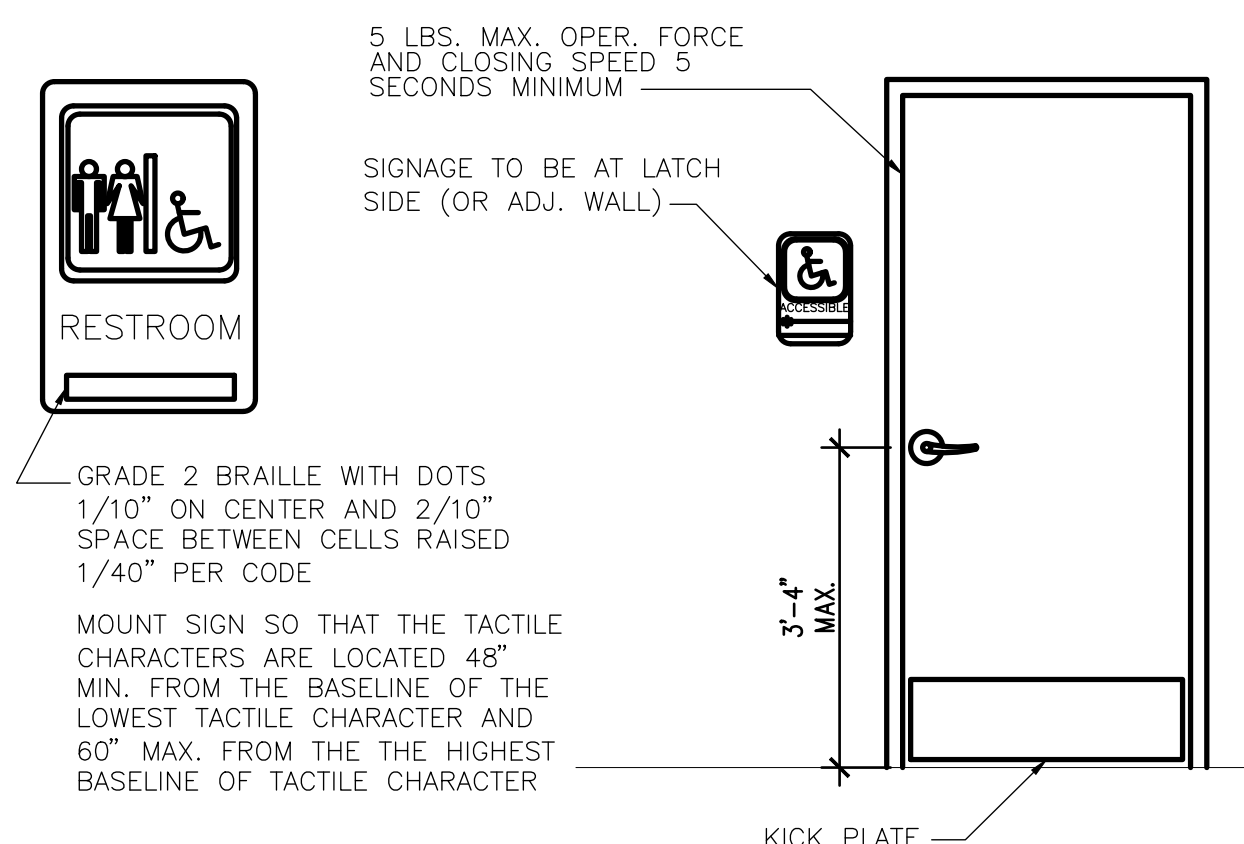
13 TRANSACTION SECTION DETAIL
SCALE: 3" = 1'-0"



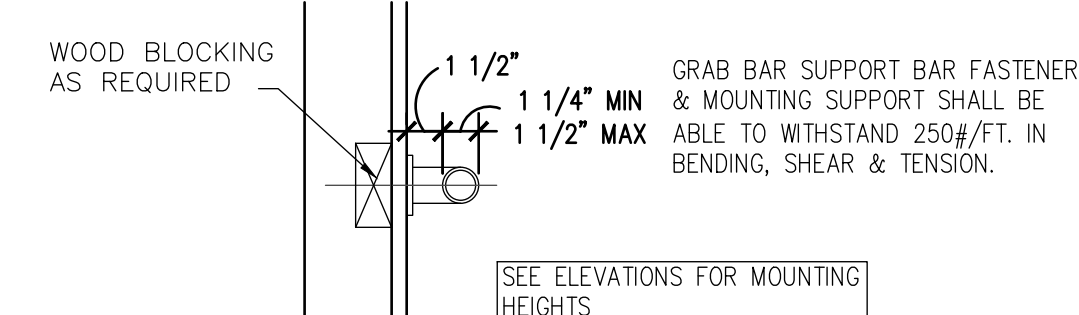
14 TRANSACTION PLAN DETAIL
SCALE: 3" = 1'-0"



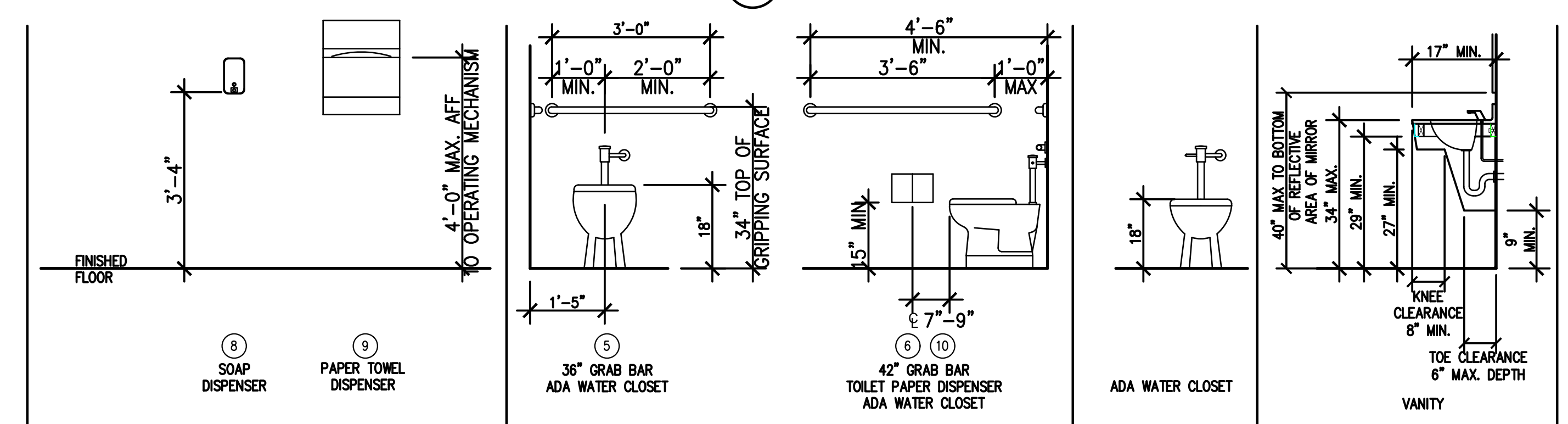
15 TRANSACTION WINDOW SECTION
SCALE: 1" = 1'-0"



17 RESTROOM SIGN DETAIL
SCALE: 1/2" = 1'-0"



18 GRAB BAR DETAIL
SCALE: 1 1/2" = 1'-0"



19 ADA REQUIREMENTS
NOT TO SCALE

NOTE: REFER ADA-1 TO ADA-3
FOR ADDITIONAL REQUIREMENTS