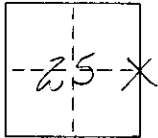


# CORNER RECORD

COUNTY OF MONO T. 1N R. 26E 100E MERIDIAN CALIFORNIA  
 CORNER TYPE: GOV'T. CORNER ☒ MEANDER ☐ RANCHO ☐ CONTROL ☐ OTHER ☐  
 CORNER IDENTIFICATION - DATE OF VISIT 9/26/1977



CORNER - LEFT AS FOUND ☒ FOUND AND TAGGED ☐ REESTABLISHED OBLITERATED CORNER ☐ REBUILT ☐

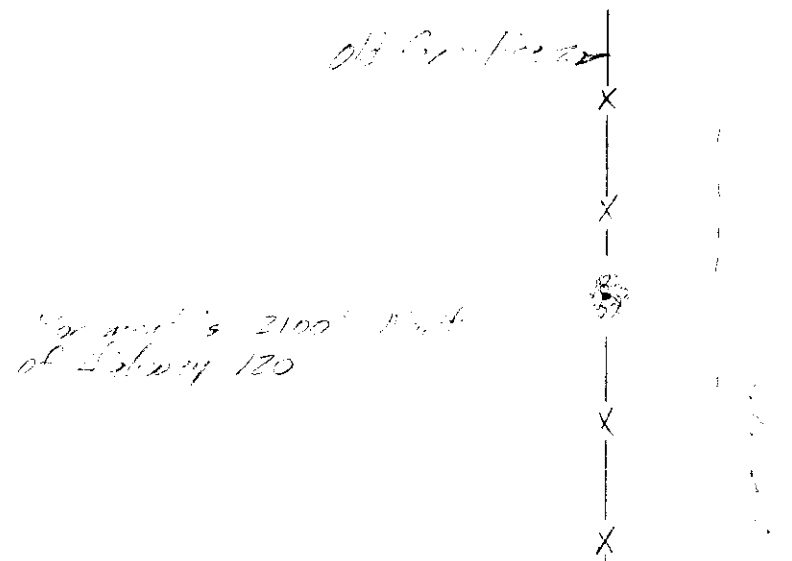
PHYSICAL DESCRIPTION OF CORNER FOUND: EVIDENCE AND METHOD USED TO IDENTIFY OR REESTABLISH Ed. 2 1/2' diam.  
X 0.5' high mound of rocks in old fence line. Set 1x2 & tack  
in center of road.

PHYSICAL DESCRIPTION OF MONUMENTS REBUILT OR PERPETUATED

Pictures Taken - Roll #3 Exp #7 - SW of monument  
Exp #3 - 15 ft N.E.

CALIFORNIA COORDINATE SYSTEM ORDER: FIRST ☐ SECOND ☐ THIRD ☐  
 STATIONS USED: NGS (USC & GS) ☐ STATE ☐ COUNTY ☐ OTHER ☐ STATION \_\_\_\_\_ STATION \_\_\_\_\_  
 ZONE \_\_\_\_\_ ELEVATION \_\_\_\_\_ NORTHINGS (Y) \_\_\_\_\_ EASTINGS (X) \_\_\_\_\_

SKETCH: (Include reference tie or witness points, remarks and topo of area)



## SURVEYOR'S CERTIFICATE

THIS CORNER RECORD WAS PREPARED BY ME OR UNDER MY DIRECTION IN CONFORMANCE WITH THE LAND SURVEYORS ACT ON September 26, 1977

SIGNED: [Signature]

L.S. or R.C.E. No.: [Signature]

SEAL

## COUNTY SURVEYOR'S CERTIFICATE

THIS CORNER RECORD WAS RECEIVED \_\_\_\_\_ 19\_\_\_\_  
 AND EXAMINED AND FILED \_\_\_\_\_ 19\_\_\_\_

BY: \_\_\_\_\_

TITLE: \_\_\_\_\_

DOCUMENT No. 1036-55

STATEMENT ON BACK OF SHEET

YES ☐ NO ☐