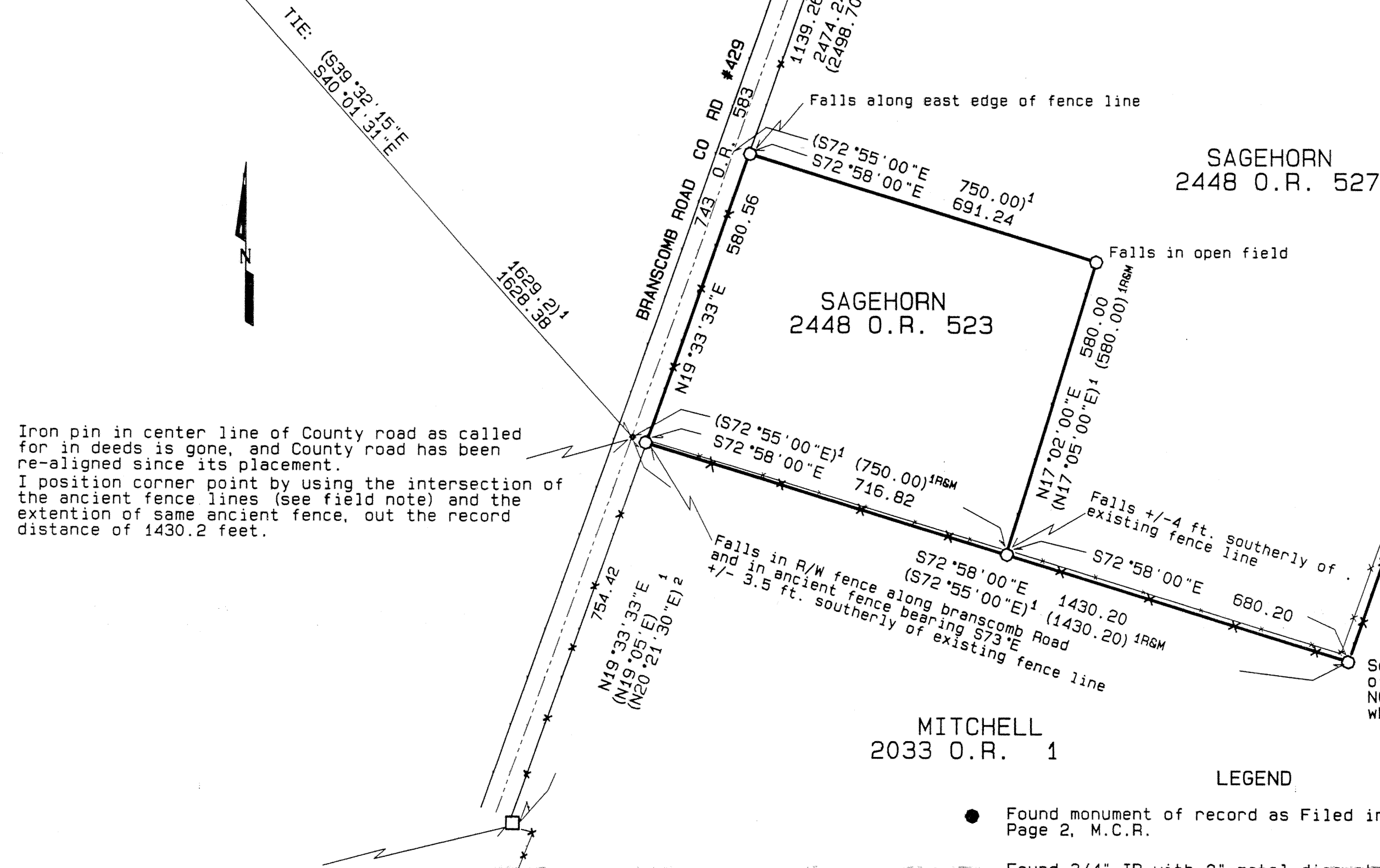


SECTION CORNER  
Found BCIP properly marked by BLM dated 1952 and  
BT's as follows: (SEE PARCEL MAP 72-1, M.C. 2, DR. 21, PG. 2)  
1) 5" madrone, S40 1/4°W, 25.1 ft. (now a healed 6" tpl.)  
2) 4" madrone, N41 1/4°W, 7.6 ft. (now a healed 7" dia.)  
B.T.'s to NE & SE are gone.

SECTION CORNER.  
Found BCIP properly marked by L.S. 2539 and B.T.'s as  
found and described per M.C. 2, DR. 21, PG. 2:  
OBT 1) 48" oak, S22°W, 78 lks. is a dead stub.  
OBT 2) 24" pine stump N18°W 98lks. not searched for.  
OBT 3) 18" oak, S86°E, 210 lks. not searched for  
NBT 4) 12" w oak in fence corner, S54 1/2°E 8.9 ft  
(now 16" with healed face)



Iron pin in center line of County road as called  
for in deeds is gone, and County road has been  
re-aligned since its placement.  
I position corner point by using the intersection of  
the ancient fence lines (see field note) and the  
extension of same ancient fence, out the record  
distance of 1430.2 feet.

Found 3/4" IP with 2" metal disc stamped "CO R-W" in fence corner  
as per Right-of-way map on file in the County Department of Transportation

#### COUNTY SURVEYOR'S NOTE

This map is approved for filing in accordance with  
California Government Code Section 66412(d) and  
County Code Section 17-17(B) (5), pursuant to County  
approved Boundary Line Adjustment No. B30-97.

- LEGEND
- Found monument of record as Filed in Map Case 2, Drawer 21,  
Page 2, M.C.R.
  - Found 3/4" IP with 2" metal disc stamped "CO R-W"  
as per Right-of-way map on file in the County Department  
of Transportation
  - 5/8" rebar with plastic cap Stamped L.S. 7207, set this survey.
  - (—) Record data, per Map Case 2, Drawer 21, Page 2, M.C.R.
  - (—)<sup>1</sup> Record data, per Deed as designated hereon
  - (—)<sup>2</sup> Record data, per found Branscomb Road map on file  
with the County Department of Transportation.
  - (—)<sup>RGM</sup> Record data measured this survey
  - existing fence line
  - existing fence line

#### COUNTY RECORDER'S STATEMENT

Filed this 10 day of August, 2000  
at 8:44 A.M. in Maps, Drawer 67, Page 79  
at the request of David L. Bushnell.

Marsha A Wharff - County Recorder

By: Rita Bernard  
Deputy

Fee: 8.00

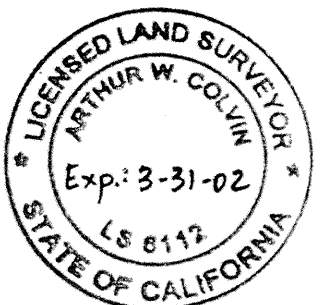
#### COUNTY SURVEYOR'S STATEMENT

This map has been examined in accordance with  
Section 8766 of the Land Surveyors' Act this  
8th day of August, 2000.

Stanley Townsend - County Surveyor  
Mendocino County, California

By: Arthur W. Colvin, Deputy

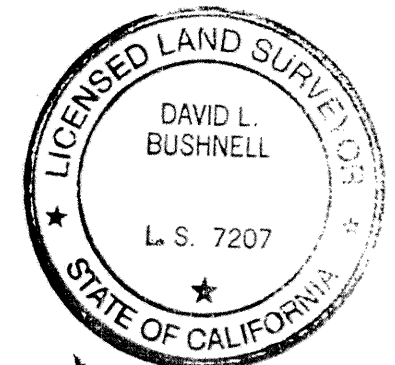
Arthur W. Colvin - L.S. 6112 Exp. date = 3/31/02



#### SURVEYOR'S STATEMENT

This map correctly represents a survey made by  
me or under my direction in conformance with the  
requirements of the Land Surveyors' Act at the  
request of Frank Sagehorn in October 1999.

David L. Bushnell  
David L. Bushnell L.S. 7207 (Exp. date = 3/31/04)



#### BASIS OF BEARINGS:

From field ties to monuments of record as shown, and Filed in  
Map Case 2, Drawer 21, Page 2, Mendocino County Records.

## RECORD OF SURVEY FOR FRANK SAGEHORN

IN THE UNINCORPORATED AREA OF THE COUNTY OF  
MENDOCINO, STATE OF CALIFORNIA  
IN A PORTION OF SECTION 27, T.21 N.- R.15 W., MDM  
SCALE: 1" = 200' NOVEMBER 1999

BUSHNELL SURVEY & TIMBER SERVICE, INC.  
649 BEAR CREEK ROAD  
GARBERVILLE, CA 95542 PH. (707) 923-2104

SHEET 1 OF 1 SHEET

# 59

MAPS  
DRAWER 67  
PAGE 79