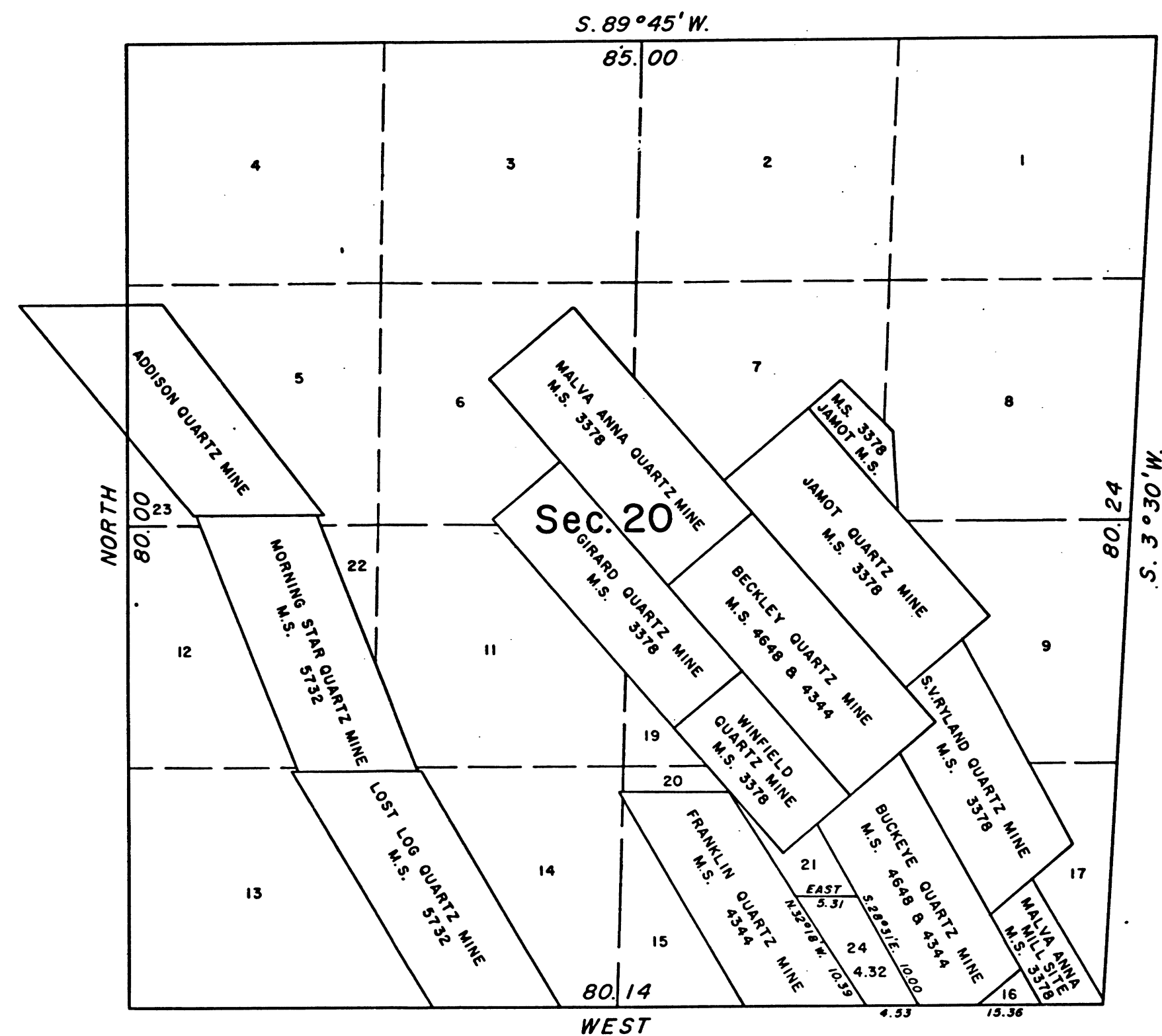


TOWNSHIP 3 NORTH, RANGE 11 EAST, OF THE MOUNT DIABLO MERIDIAN, CALIFORNIA.
SUPPLEMENTAL PLAT



This plat of section 20, T. 3 N., R. 11 E., Mount Diablo Meridian, California, showing new lottings created by the cancellation of Beckley Millsite, Mineral Survey No. 4344 B, is based upon the township plats approved February 24, 1871, and July 14, 1884; township diagrams dated October 21, 1896, January 24, 1905, and September 11, 1908; and, the mineral survey plat approved October 10, 1904.

UNITED STATES DEPARTMENT OF THE INTERIOR
BUREAU OF LAND MANAGEMENT
Washington, D. C. October 25, 1965

This plat, showing new lottings, is based upon the official records, and having been correctly prepared in accordance with the regulations, is hereby accepted.

For the Director

Chief, Division of Engineering

41220-B

T. 3 N., R. 11 E., M. D. M.

BLM 87