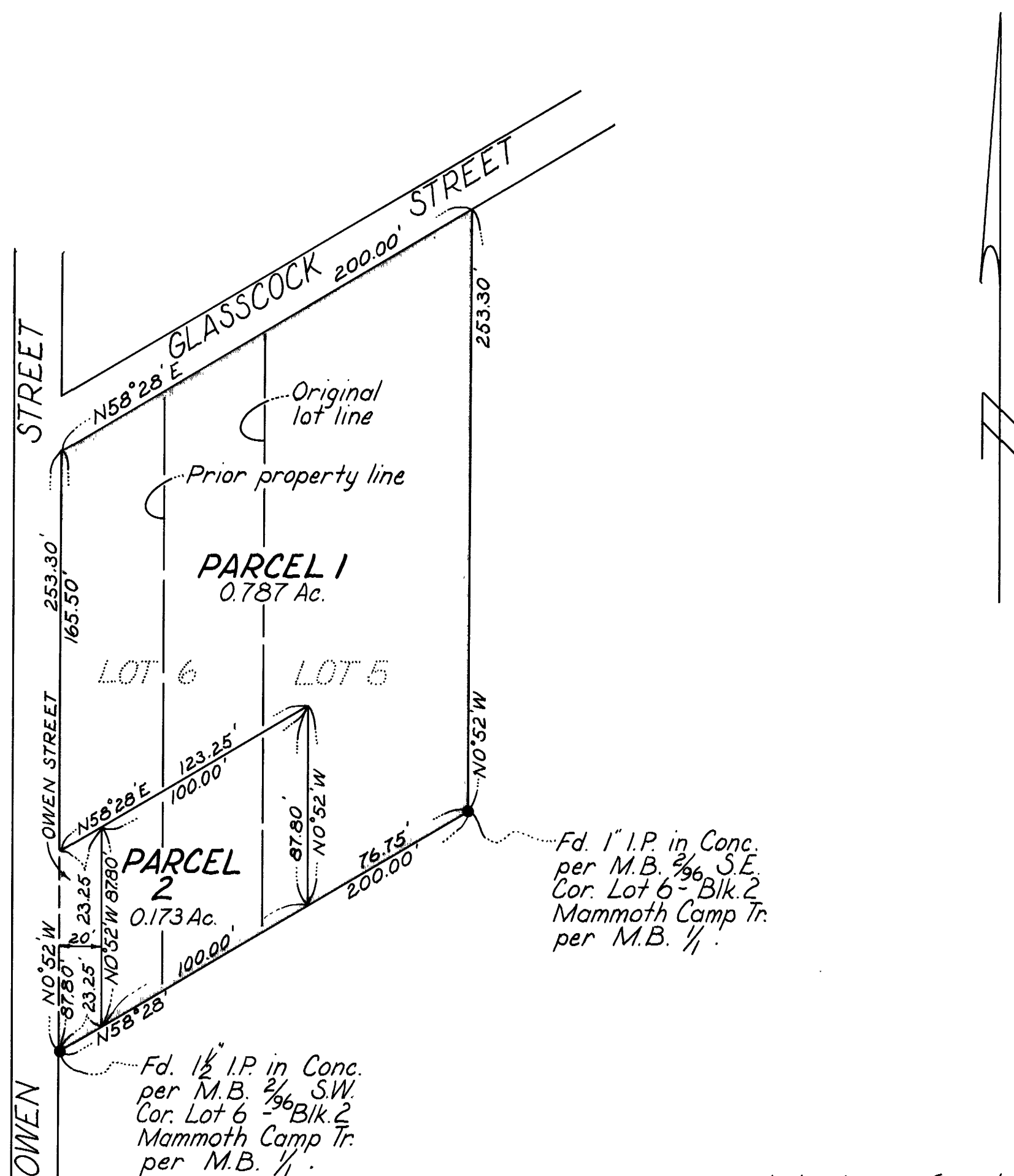


IN THE COUNTY OF MONO, STATE OF CALIFORNIA,
BEING A DIVISION OF LOTS 5 AND 6 OF
BLOCK 2 OF MAMMOTH CAMP TRACT, AS
SHOWN ON THE MAP THEREOF RECORDED
IN BOOK 1, PAGE 1 OF MAPS RECORDS OF
SAID COUNTY, SAID LOTS BEING A PORTION
OF THE NORTHWEST QUARTER OF SECTION
3, TOWNSHIP 4 SOUTH, RANGE 27 EAST,
M.D.M. 5

Record data shown on this map is from the map of Mammoth Camp Tract recorded in Book 1, Page 1 of Maps.



- Indicates a found point as noted. A certification executed by Robert Schotz stating that these monuments are direct replacements of original monuments is on file in the office of the County Surveyor.