

SHEET 1 OF 6

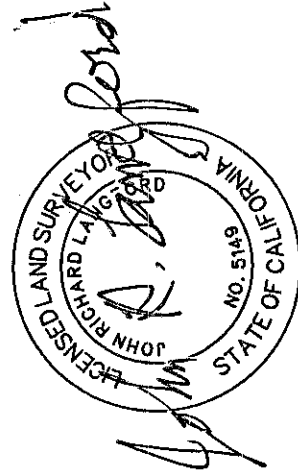
RECORD OF SURVEY NO. 35-33

BEING A SURVEY OF THE PROPERTY DESCRIBED IN DOC NO. 2003013236 AND AN NRCS CONSERVATION EASEMENT AGREEMENT NO. 55-9104-19-01SOR AND BEING LOCATED IN A PORTION OF SECTION 12, TOWNSHIP 1 SOUTH, RANGE 29 EAST; IN PORTIONS OF SECTIONS 29 THRU 32 TOWNSHIP 1 NORTH, RANGE 30 EAST AND IN A PORTION OF SECTION 6, TOWNSHIP 1 SOUTH, RANGE 30 EAST, MOUNT DIABLO MERIDIAN COUNTY OF MONO, STATE OF CALIFORNIA

SURVEYOR'S STATEMENT

THIS MAP CORRECTLY REPRESENTS A SURVEY MADE BY ME OR UNDER MY DIRECTION IN CONFORMANCE WITH THE REQUIREMENTS OF THE PROFESSIONAL LAND SURVEYOR'S ACT AT THE REQUEST OF THE ADOBE VALLEY LLC IN FEBRUARY, 2020.

JOHN R. LANGFORD
P.L.S. 5149
EXPIRATION DATE: 6/30/21



PURPOSE OF SURVEY:

THE REASON FOR THIS RECORD OF SURVEY MAP IS AS SET FORTH IN SECTION 8762 (B)(5) OF THE PROFESSIONAL LAND SURVEYOR'S ACT; THE POINTS OR LINES SET DURING THE PERFORMANCE OF THE FIELD SURVEY OF THE PROPERTY BOUNDARY DESCRIBED IN DOC NO. 2003013236 AND AN NRCS CONSERVATION EASEMENT AGREEMENT NO. 55-9104-19-01SOR ARE NOT SHOWN ON ANY SUBDIVISION MAP, OFFICIAL MAP, OR RECORD OF SURVEY.

RECORDER'S STATEMENT

FILED THIS 15 DAY OF OCTOBER 2020, AT 2:36 PM IN BOOK 5 OF RECORD OF SURVEYS AT PAGE 69 AT THE REQUEST OF THE ADOBE VALLEY LLC.

MONO COUNTY RECORDER

BY: Shannon Kendall
SHANNON KENDALL
MONO COUNTY RECORDER

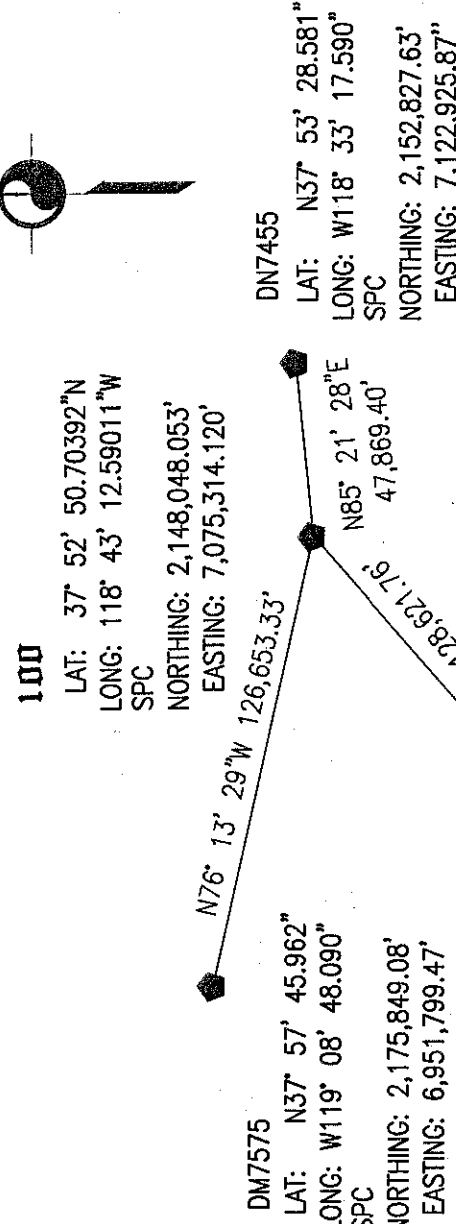
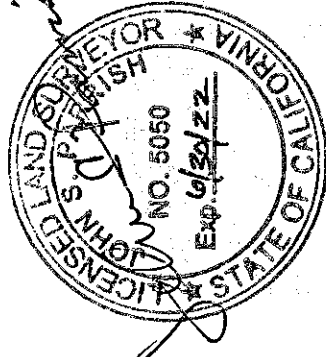
DOCUMENT NO: 202000 4047
FEE: \$249.00

EXPIRATION DATE: 6/30/2021
09/28/2020

COUNTY SURVEYOR'S STATEMENT

THIS MAP HAS BEEN EXAMINED IN ACCORDANCE WITH SECTION 8766 OF THE PROFESSIONAL LAND SURVEYOR'S ACT THIS 5th DAY OF October, 2020.

JOHN S. PARRISH
P.L.S. 5050
MONO COUNTY SURVEYOR
LICENCE EXPIRES 6/30/22



OPUS SOLUTION CONTROL DIAGRAM

SCALE: 1" = 10 MILES

SURVEY DATA

BASIS OF BEARINGS: NORTH, as determined by an NGS Opus solution at Point 100, A
USFS 3-1/4" aluminum cap inscribed

TIS
R29E R30E
S11S6
S121S7
1994
LS7002

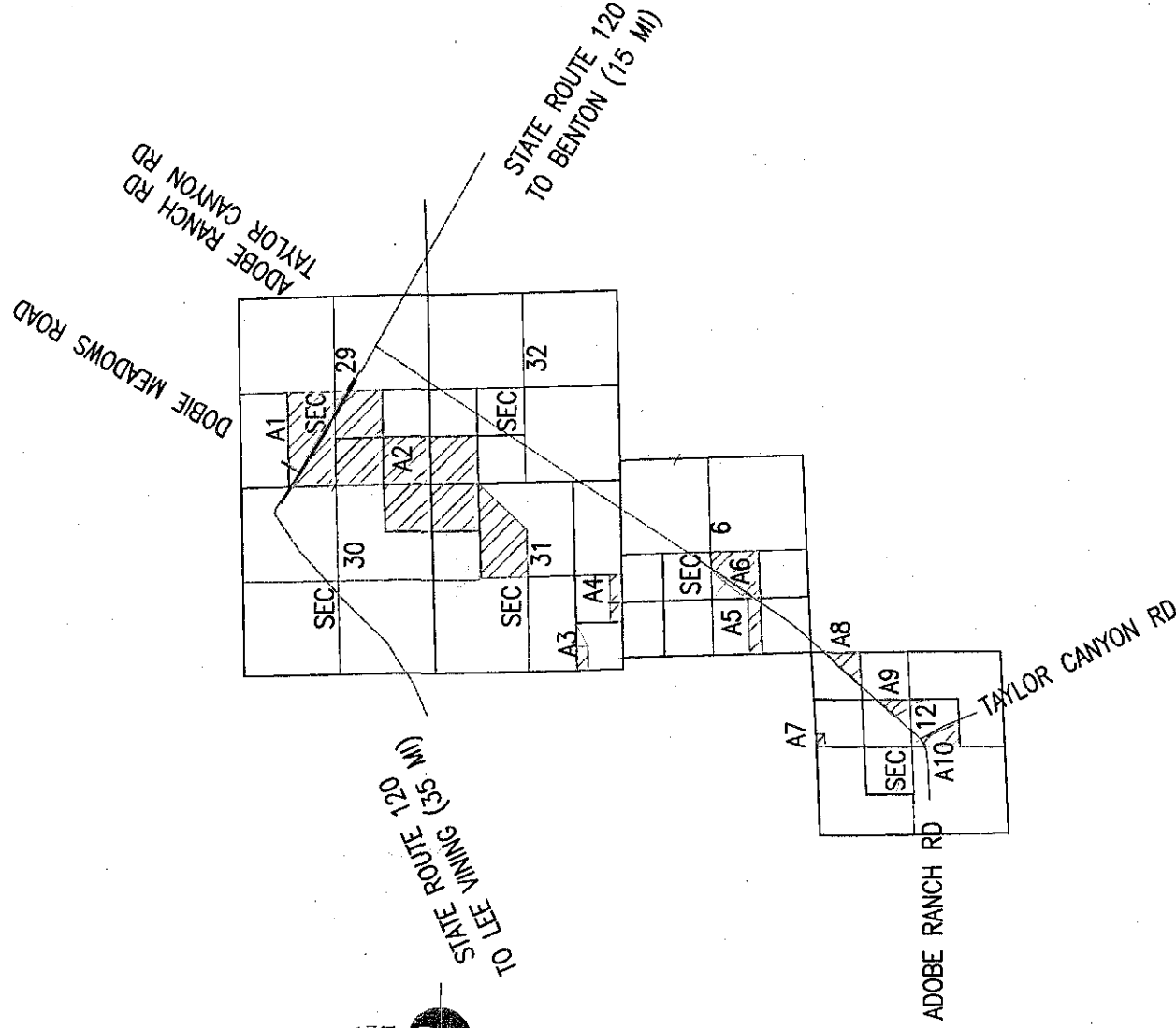
Bearings are True; Distances are Ground

CORS Stations used for Opus Solution:

PID	DESIGNATION	LATITUDE	LONGITUDE
1.	AH2502 MINS MINARET SUMMIT CORS ARP	N37°39'13.535"	W119°03'39.187"
2.	DN7575 F636 LOCABINRCS2007 CORS ARP	N37°57'45.962"	W119°08'48.090"
3.	DN7455 P650 ANTELOPEMCS2006 CORS ARP	N37°53'28.581"	W118°33'17.590"

NGS Opus Latitude & Longitude Base values are:
LATITUDE: N 37° 52' 50.70392" (±0.009 meters)
LONGITUDE: W 118° 43' 12.59011" (±0.011 meters)
CCS, Zone III WAD_83(2011)(EPOCH:2010.0000)
Coordinate Base values are:
Northing: 2,148,048.053 US Survey Feet (654726.356 meters)
Easting: 7,075,314.120 US Survey Feet (2156560.057 meters)
Ortho Height: 6,673.27 US Survey Feet [2034.016 meters (±0.046 meters)]
[NAVD88 (Computed using Geoid18)]

Convergence Angle: +1°05'23" @ Base
True Azimuth= Grid Azimuth + Convergence Angle
Combined Grid Factor: 0.99961655 @ Base
Ground Distance=
Grid Distance/Combined Grid Factor



VICINITY MAP

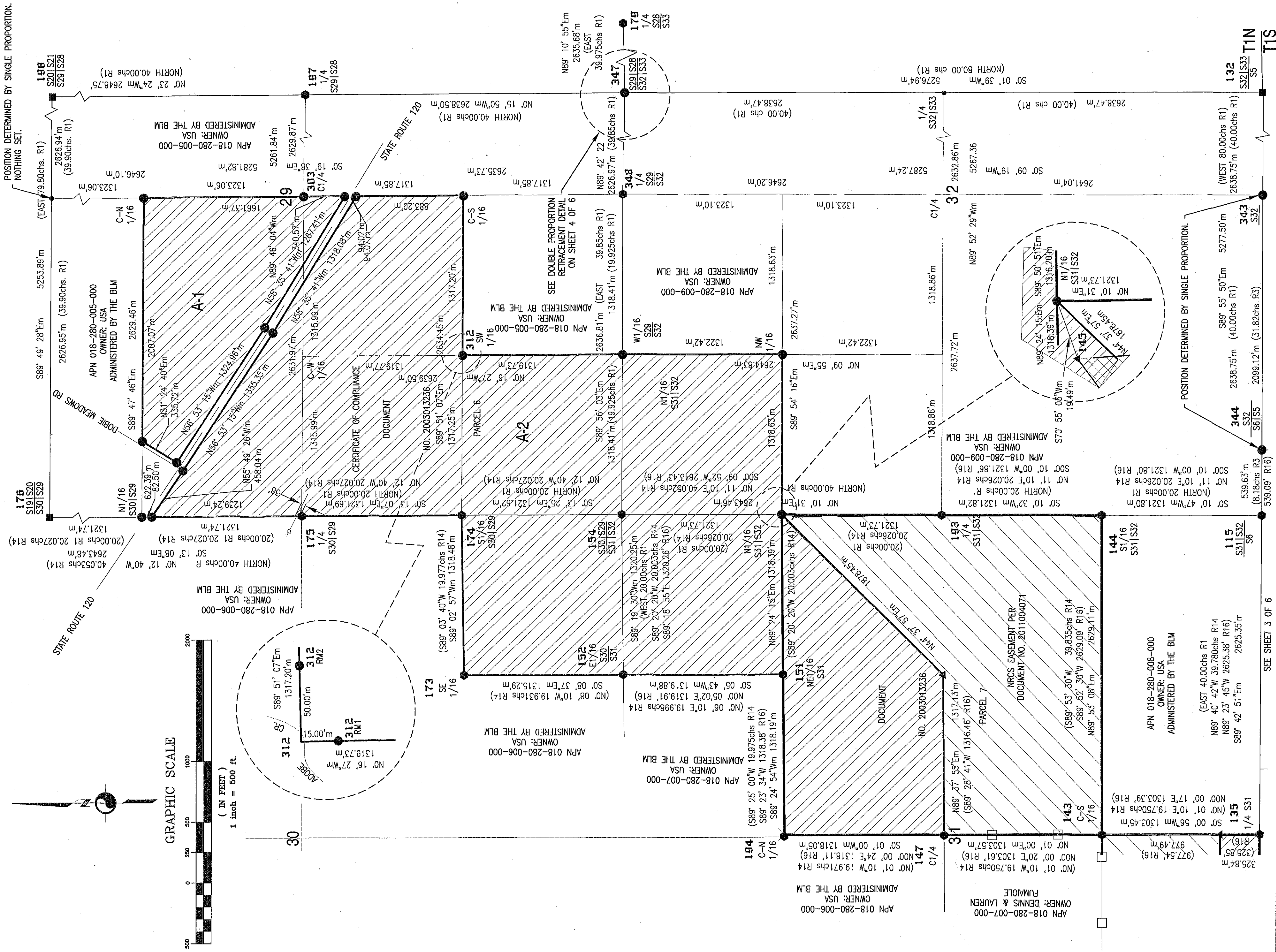
SCALE: 1" = 1 MILE

LEGEND

- Found section corner monument as described in the Corner Descriptions on Sheet 5 of 5.
- Found a 1-1/4" red plastic cap inscribed LS4587 flush w/ ground.
- Found a 1-1/4" red plastic cap inscribed LS4546 IN 1" inner diameter iron pipe.
- Found a USFS 3-1/4" aluminum cap as described in the CORNER DESCRIPTIONS on Sheet 5 of 5.
- Found a State of California, Division of Highways monument as described in the CORNER DESCRIPTIONS on Sheet 5 of 5.
- Set a 2" aluminum cap inscribed LS5149 on a 5/8"x24" rebar flush with ground unless otherwise noted.
- Searched for— not found. Nothing set.
- NRCS Easement. Warranty Deed to be recorded separately.
- Based on field measurements.
- Based on record information per HISTORY OF SURVEYS on Sheet 4 of 5.
- Existing Fence
- Section Line
- 1/4 Section Line
- 1/16 Section Line
- Property Line
- EX NRCS Easement w/ Warranty Deed
- NRCS Easement Warranty Deed to be recorded separately

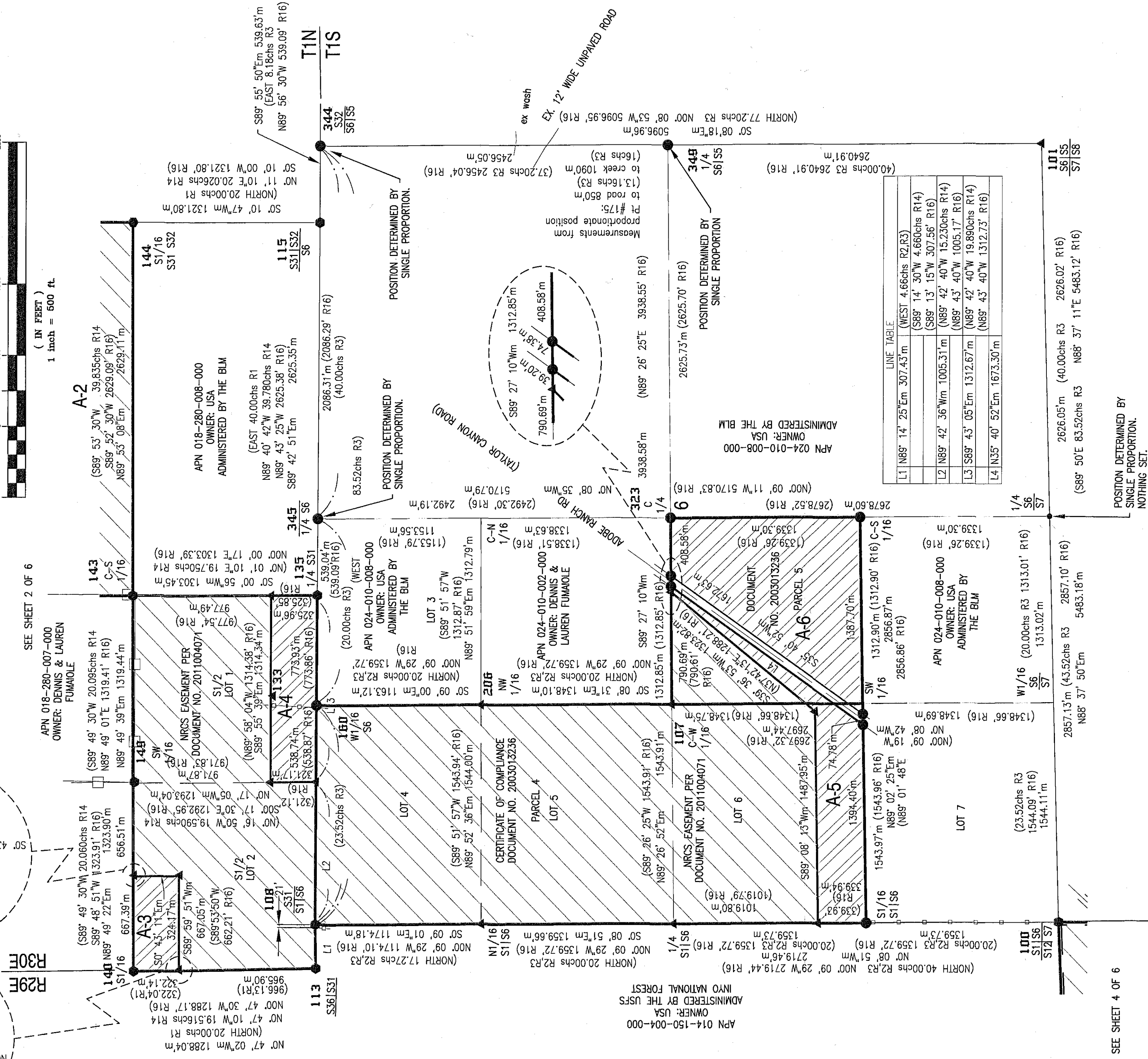
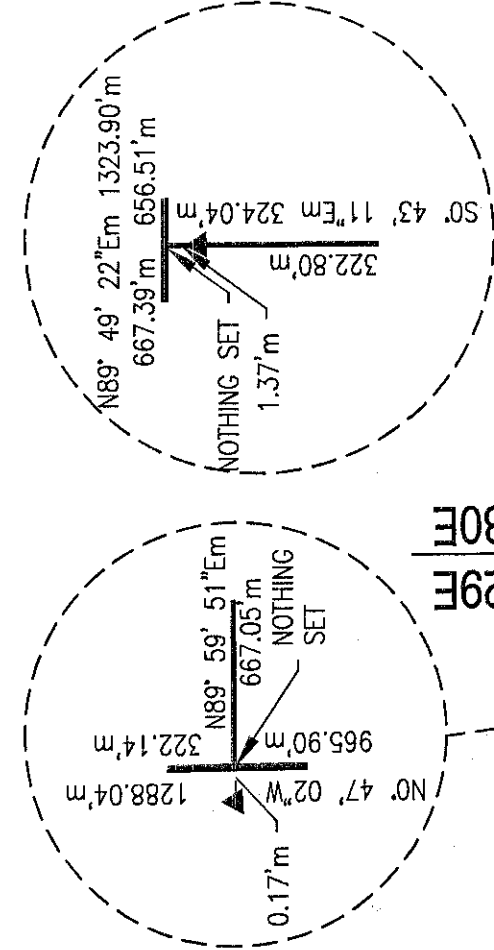
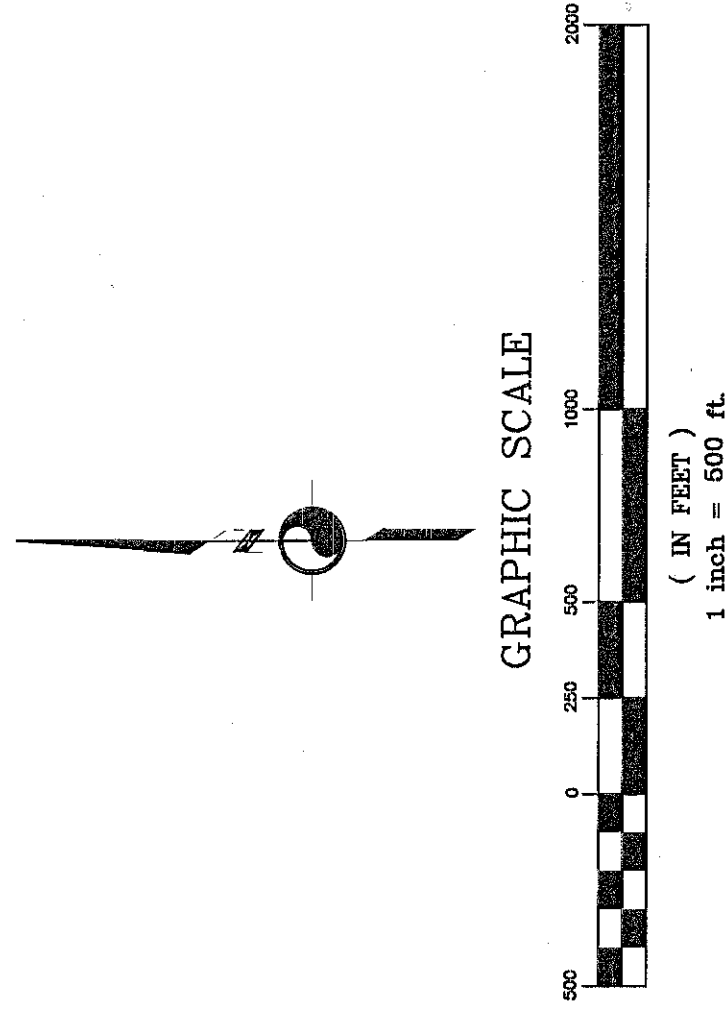
RECORD OF SURVEY NO. 35-33

BEING A SURVEY OF THE PROPERTY DESCRIBED IN DOC NO. 2003013236 AND AN NRCS CONSERVATION EASEMENT AGREEMENT NO. 55-9104-19-01S0R AND BEING LOCATED IN A PORTION OF SECTION 12, TOWNSHIP 1 SOUTH, RANGE 29 EAST; IN PORTIONS OF SECTIONS 29 THRU 32 TOWNSHIP 1 NORTH, RANGE 30 EAST AND IN A PORTION OF SECTION 6, TOWNSHIP 1 SOUTH, RANGE 30 EAST, MOUNT DIABLO MERIDIAN COUNTY OF MONO, STATE OF CALIFORNIA



RECORD OF SURVEY NO. 35-33

BEING A SURVEY OF THE PROPERTY DESCRIBED IN DOC NO. 2003013236 AND AN NRCS
CONSERVATION EASEMENT AGREEMENT NO. 55-9104-19-01S0R AND BEING LOCATED IN
A PORTION OF SECTION 12, TOWNSHIP 1 SOUTH, RANGE 29 EAST; IN PORTIONS OF
SECTIONS 29 THRU 32 TOWNSHIP 1 NORTH, RANGE 30 EAST
AND IN A PORTION OF SECTION 6, TOWNSHIP 1 SOUTH, RANGE 30 EAST, MOUNT DIABLO MERIDIAN
COUNTY OF MONO, STATE OF CALIFORNIA

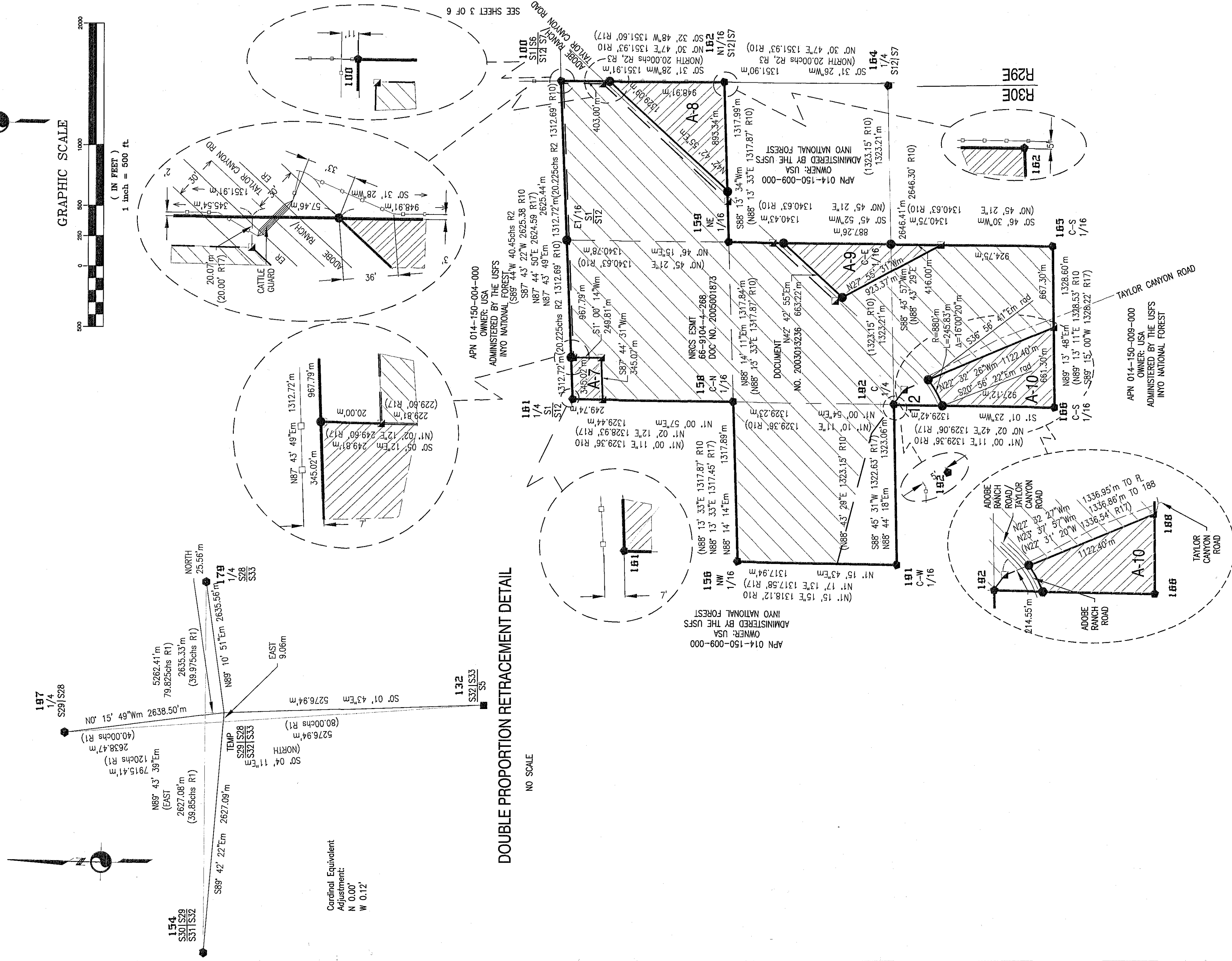


RECORD OF SURVEY NO. 35-33

BEING A SURVEY OF THE PROPERTY DESCRIBED IN DOC NO. 2003013236 AND AN NRCS CONSERVATION EASEMENT AGREEMENT NO. 55-9104-19-01S0R AND BEING LOCATED IN A PORTION OF SECTION 12, TOWNSHIP 1 SOUTH, RANGE 29 EAST; IN PORTIONS OF

SECTIONS 29 THRU 32 TOWNSHIP 1 NORTH, RANGE 30 EAST

AND IN A PORTION OF SECTION 6, TOWNSHIP 1 SOUTH, RANGE 30 EAST, MOUNT DIABLO MERIDIAN
COUNTY OF MONO, STATE OF CALIFORNIA



RECORD OF SURVEY NO. 35-33

BEING A SURVEY OF THE PROPERTY DESCRIBED IN DOC NO. 2003013236 AND AN NRCS CONSERVATION EASEMENT AGREEMENT NO. 55-9104-19-01SOR AND BEING LOCATED IN A PORTION OF SECTION 12, TOWNSHIP 1 SOUTH, RANGE 29 EAST; IN PORTIONS OF SECTIONS 29 THRU 32 TOWNSHIP 1 NORTH, RANGE 30 EAST

AND IN A PORTION OF SECTION 6, TOWNSHIP 1 SOUTH, RANGE 30 EAST, MOUNT DIABLO MERIDIAN
COUNTY OF MONO, STATE OF CALIFORNIA

CORNER DESCRIPTIONS

100	USFS 3-1/4"Ø aluminum cap up 0.5' inscribed T1S R29E R30E S11 S6 S12 S7 LS7002 1994	151	USFS 3-1/4"Ø aluminum cap flush w/ ground inscribed 1/4 S1 S12 LS7002 1994
101	in 3'Ø rock mound in N-S fence line. Accepted as section corner per R10. a 1-1/2"Ø spindle & tag ins LS4587 flush w/ ground. No evidence of wood post per R3 or rock mound per R16. Point falls 3490' (53.76chs R3) south of ex road and 3700' (56chs R3) south of wash. Accepted as best available evidence for the position of the corner.	152	USFS 3-1/4"Ø aluminum cap up 0.2' inscribed N 1/16 S12 S7 LS7002 1994
107	2"Ø brass cap inscribed COR in unstable 2" ID iron pipe down 0.5' @ edge of ditch bank. Accepted as 1/16 corner per R16. CN 1/16 LS4587	154	USFS 3-1/4"Ø aluminum cap up 0.3' inscribed 1/4 S12 S7 LS7002 1994
108	GLO (in lieu of BLM) 3-1/2"Ø brass cap inscribed TIN R30E S31 S11S6 R29E R30E T1S 2005	155	w/ USFS boundary sign 2' northerly from monument Accepted as corner per R10.
113	up 0.8'. Accepted as Corner per R14. BLM 3-1/4"Ø brass cap inscribed S C TIN R29E R30E S36 S31 2005	156	USFS 3-1/4"Ø aluminum cap down 0.1' inscribed S1/16 S12 C LS7002 1994
115	flush w/ ground. Accepted as corner per R14. CT 2-1/2"Ø brass cap inscribed TIN R30E S31 S32 S6 T1S REPLACED 7-1976	173	USFS boundary sign 2.5' southwesterly from monument Accepted as corner per R10.
132	up 0.8' in a 2-1/2"Ø rock mound. Accepted as a careful and faithful perpetuation of the original Corner per R6. CT 2-1/2"Ø brass cap inscribed TIN R30E S32 S33 S5 T1S	174	BLM 3-1/4"Ø brass cap inscribed SE1/16 S30 2006
133	No reference. Monument lies 3.82' south of easement line per R16. Not accepted.	175	up 0.6' in 3'Ø rock mound. Accepted as Corner per R14. BLM 3-1/4"Ø brass cap inscribed S1/16 S30 S29 2006
135	up 0.4' in a 1" rock mound. Accepted as Corner per R14. BLM 3-1/4"Ø brass cap inscribed TIN R30E 1/4 S31 T1S 2005	176	up 0.5'. Accepted as Corner per R14. CT 2-1/2"Ø brass cap inscribed TIN R30E S19 S20 S30 S29 REPLACED 7-1976
140	up 0.4'. Accepted as Corner per R14. BLM 3-1/4"Ø brass cap inscribed S1/16 S31 2005	179	up 0.7'. Accepted as Corner per R14. USFS 3-1/4"Ø aluminum cap flush w/ ground inscribed W1/16 C S12 LS7002 1994
143	up 0.4' in a 2'Ø rock mound @ a fence corner. Accepted as Corner per R14 and R15. BLM 3-1/4"Ø brass cap inscribed S1/16 S31 S32 2005	181	USFS 3-1/4"Ø aluminum cap flush w/ ground inscribed W1/16 C S12 LS7002 1994
144	up 0.6' in a 3'Ø scattered rock mound. Accepted as Corner per R14. A 1-1/4"Ø red plastic cap per R16 bears S69° 49' 40"W, 19.49' from the proportionate position for the N1/16 corner S31/S32. Cap not accepted as 1/16 corner. Set a 2"Ø aluminum cap inscribed LS5149 on a 5/8"x24" rebar at the proportionate position.	182	USFS 3-1/4"Ø aluminum cap flush w/ ground inscribed T1S R29E C1/4 S12 LS7002 1994
147	BLM 3-1/4"Ø brass cap inscribed TIN R30E C1/4 S31 2005	193	BLM 3-1/4"Ø brass cap inscribed TIN R30E 1/4 S31 S32 2005
148	up 0.4' @ a fence corner. Accepted as Corner per R14 and R15. BLM 3-1/4"Ø brass cap inscribed SW1/16 S31 2005	194	up 0.8' in 1.5"Ø rock mound. Accepted as Corner per R14. Accepted as corner per R10. BLM 3-1/4"Ø brass cap inscribed C N1/16 S31 C 2005
151	up 0.3' @ a fence corner. Accepted as Corner per R14 and R15. BLM 3-1/4"Ø brass cap inscribed NE1/16 S31 2006		down 0.4' in center of remnant of old dirt road. A BLM 3-14"Ø brass cap up 0.8' inscribed RM 1/16 S1 S31 15/16 2005
152	up 0.6'. Accepted as Corner per R14. BLM 3-1/4"Ø brass cap inscribed E1/16 S30 S31 2006		bears N46° 24' 49"E, 74.85' from monument. A "T" post bears S89° 48' 25"W, 20.00' from monument. A BLM brass cap up 0.7' in a 1"Ø rock mound inscribed RM 1/16 S31 15/16 2005
154	up 0.5' in a 3.5"Ø rock mound. Accepted as Corner per R14. BLM 3-1/4"Ø brass cap inscribed TIN R30E S30 S29 S31 S32 2006	197	bears N44° 00' 14"W, 74.89' from monument. Accepted as Corner per R14. Found a 4"Øx7' old decayed post in sagebrush. Accepted as position of original monument per R1 Set a 2"Ø aluminum cap inscribed TIN R30E on a 5/8"Øx24" rebar.
156	USFS 3-1/4"Ø aluminum cap illegible under 0.5' water logged swamp inscribed (per R10) N1/16 S12 LS7002 1994	198	CT 2-1/2"Ø brass cap inscribed TIN R30E S20 S21 S29 S28 REPLACED 7-1976
158	with boundary sign 2' northwesterly from monument. Accepted as corner per R10. USFS 3-1/4"Ø aluminum cap up 0.2" inscribed C NW1/16 S12 C LS7002 1994	206	up 0.8' in a 3"Ø rock mound w/ paddle marker post 2' southeasterly from monument. No evidence of original corner found. Accepted as a careful and faithful perpetuation of the original Corner per R4. A 2"Ø brass cap up 0.4' inscribed PROP in a 2" ID iron pipe COR NW1/16 LS4587
159	Accepted as corner per R10. USFS 3-1/4"Ø aluminum cap flush w/ ground inscribed NE1/16 S12 LS7002 1994		Accepted as corner per R16.
160	w/ illegible USFS monument sign 2' southerly from monument. Accepted as corner per R10. Found nail in lieu of monument per R16 @ position of 1/16 corner per R16. Replaced with a 2"Ø aluminum cap inscribed LS5149 on a 5/8"x24" rebar.		

RECORD OF SURVEY NO. 35-33

BEING A SURVEY OF THE PROPERTY DESCRIBED IN DOC NO. 2003013236 AND AN NRCS CONSERVATION EASEMENT AGREEMENT NO. 55-9104-19-01S0R AND BEING LOCATED IN A PORTION OF SECTION 12, TOWNSHIP 1 SOUTH, RANGE 29 EAST; IN PORTIONS OF SECTIONS 29 THRU 32 TOWNSHIP 1 NORTH, RANGE 30 EAST AND IN A PORTION OF SECTION 6, TOWNSHIP 1 SOUTH, RANGE 30 EAST, MOUNT DIABLO MERIDIAN COUNTY OF MONO, STATE OF CALIFORNIA

CORNER DESCRIPTIONS

303	Cap inscribed	T1N R30E C1/4 S29 2020 LS5149
312	Corner falls in Adobe Creek. Nothing set.	
312 RM1	Cap inscribed	RM SW1/16 15 S29 2020 LS5149
312 RM2	Cap inscribed	RM SW1/16 50 S29 2020 LS5149
318	Found nail in lieu of monument per R16. Accepted as 1/16 corner per R16. Replaced with a 2" aluminum cap inscribed LS5149 on a 5/8"x24" rebar.	
323	Found 2" aluminum cap inscribed	PROP COR C 1/4 LS4587 T1S R30E C1/4 S6 2020 LS5149
343	Cap inscribed	T1N R30E 1/4 S32 2020 LS5149
344	Cap inscribed	T1N R30E S32 S6 S5 T1S R30E 2020 LS5149
347	Cap inscribed	T1N R30E 1/4 S6 T1S R30E 2020 LS5149
345	Cap inscribed	T1N R30E S29 S28 S32 S33 2020 LS5149
348	Found old very deteriorated 1.5" x 14" wood post. Accepted as 1/4 corner S29/S32 per R1. Set cap per legend inscribed	1/4 S29 S32 2020 LS5149
349	Cap set in 1" rock mound inscribed	T1S R30E 1/4 S6 S5 2020 LS5149

HISTORY OF SURVEYS

- R1: 1857 USGLO survey plat and notes of Township 1 North, Range 30 East, Mount Diablo Meridian examined and approved at the Surveyor General's Office in San Francisco, California on September 17, 1857.
- R2: 1879 USGLO survey plat and notes of Township 1 South, Range 29 East, Mount Diablo Meridian examined and approved at the Surveyor General's Office in San Francisco, California on October 2, 1879.
- R3: 1880 USGLO survey plat and notes of Township 1 South, Range 30 East, Mount Diablo Meridian examined and approved at the Surveyor General's Office in San Francisco, California on April 5, 1880.
- R4: Document No. IN 30-28-1; Corner Record filed on January 26, 1977 in the Office of the Mono County Surveyor in Bridgeport, California.
- R5: Document No. IN 30 29-1; Corner Record filed on January 26, 1977 in the Office of the Mono County Surveyor in Bridgeport, CA.
- R6: Document No. IN 30-31-1; Corner Record filed on January 26, 1977 in the Office of the Mono County Surveyor in Bridgeport, CA.
- R7: Document No. IN 30-32-1; Corner Record filed on January 26, 1977 in the Office of the Mono County Surveyor in Bridgeport, CA.
- R8: Grant Deed recorded on August 23, 1993 in Volume 653, Page 452.
- R9: Coltrans R/W Record Map 09-MNO-41.33-ROUTE120 last updated September, 1993.
- R10: Record of Survey No. 35-13 filed on March 13, 1995 in Book 3 of Record of Surveys at Pages 25 thru 25E.
- R11: Record of Survey No. 35-15 filed on January 15, 1998 in Book 3 of Record of Surveys at Pages 57 & 57A.
- R12: Grant Deed recorded on December 3, 2003 as Document No. 2003013236.
- R13: Warranty Easement Deed recorded on March 11, 2005 as Document No. 2005001873
- R14: 2007 BLM survey plat and notes of Township 1 North, Range 29 & 30 East, Mount Diablo Meridian in Sacramento, CA on November 19, 2007.
- R15: Document No. IN-30-31-2; Corner Record filed on October 3, 2008 in the Office of the Mono County Surveyor in Bridgeport, CA.
- R16: Record of Survey Map No. 35-25 filed on January 13, 2010 in Book 4 of Record of Surveys at Page 74.
- R17: Unrecorded and undated Record of Survey map for U.S.D.A. Natural Resources Conservation Service.