

CORNER RECORD

Agency Index

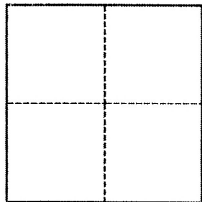
BK

///

PG 92

Document Number

CR11722

City of BERKELEY County of ALAMEDA, CaliforniaBrief Legal Description ALAMEDA-CONTRA COSTA CO. LINE NEAR TILDEN REGIONAL PARK**CORNER TYPE****COORDINATES (Optional)**

- ☐ Government Corner ☐ Control
☐ Meander ☐ Property
☐ Rancho ☒ Other

Date of Survey March 20, 2018

N. _____ E. _____

Elevation _____

Units ☐ Metric ☐ U.S. Survey Foot

Horizontal Datum _____

Zone _____ Epoch Date _____

Vertical Datum _____

☐ Complies with Public Resources Code §§8801-8819☐ Complies with Public Resources Code §§8890-8902

PLS Act Ref.:

☒ 8765(d)☐ 8771☐ 8773☐ Other:Corner/
Monument:☒ Left as found☒ Established☐ Rebuilt☐ Pre-Construction☐ Found and tagged☐ Reestablished☐ Referenced☐ Post-Construction

Narrative of corner identified and monument as found, set, reset, replaced, or removed:

☒ See sheet #2 for description(s):

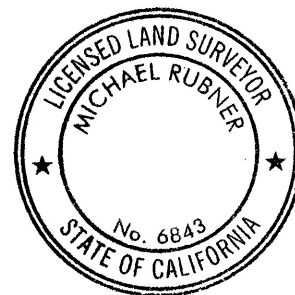
Found county line monuments A-5, SA-14, and SA-15A, per monument record sheets, and set rebar and yellow cap, stamped "EBRPD SURVEY" on line between SA-15A and SA-15 (found destroyed), and between SA-15 and SA-14. SA-15 and SA-14 are shown on the Map of the Rancho El Sobrante on file in Contra Costa County. A duplicate of this corner record is also being filed in Contra Costa County as Corner Record Number 8406.

SURVEYOR'S STATEMENT

This Corner Record was prepared by me or under my direction in conformance with

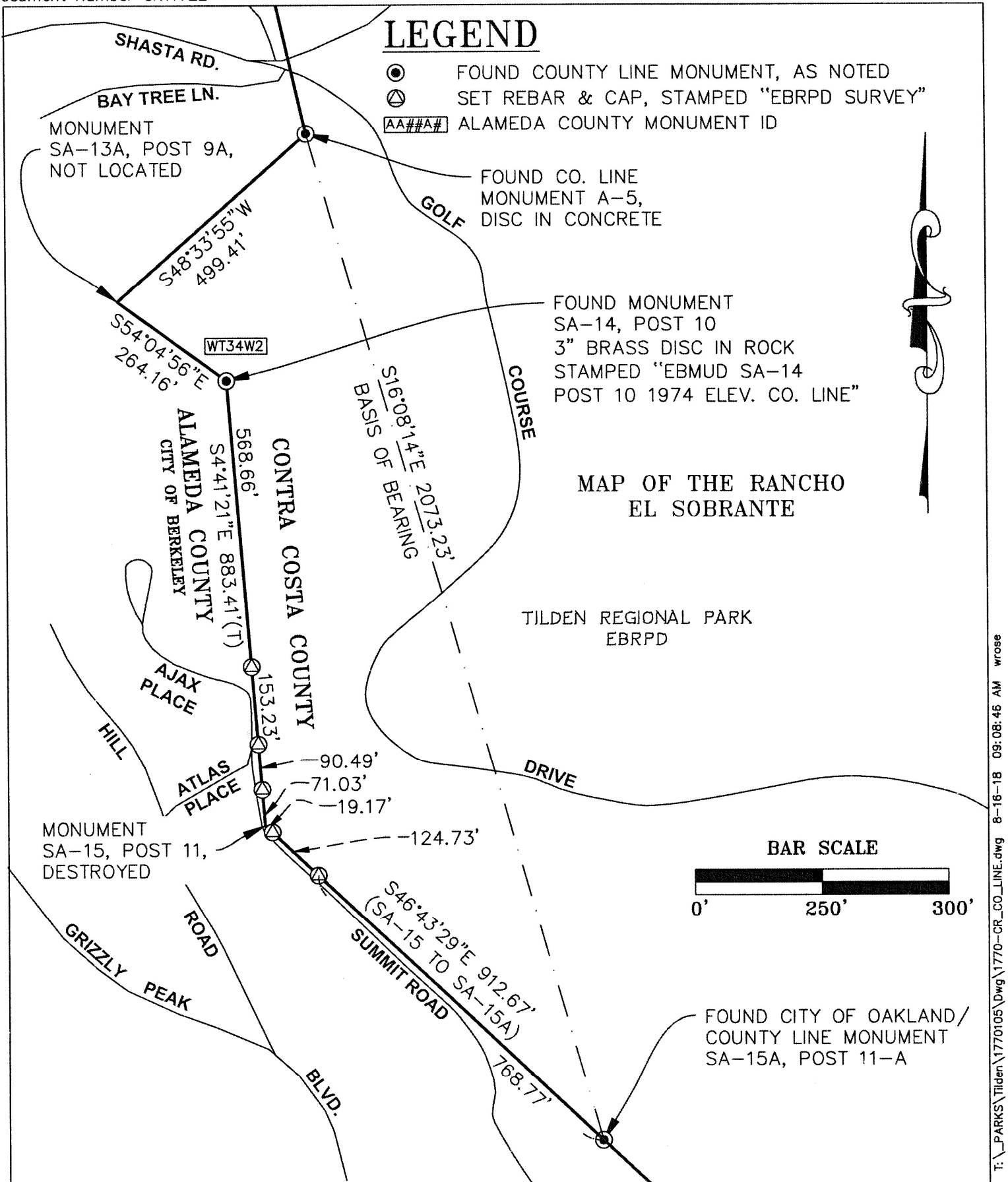
the Professional Land Surveyors' Act on May 25, 2018Signed [Signature] P.L.S. or R.C.E. No. 8260**COUNTY SURVEYOR'S STATEMENT**This Corner Record was received 9 JULY 2018and examined and filed 22 AUGUST 2018Signed Michael Rubner P.L.S. or R.C.E. No. 6843Title COUNTY SURVEYOR

County Surveyor's Comment



LEGEND

- FOUND COUNTY LINE MONUMENT, AS NOTED
- ⊙ SET REBAR & CAP, STAMPED "EBRPD SURVEY"
- AA##A# ALAMEDA COUNTY MONUMENT ID

**ALAMEDA CO./CONTRA COSTA CO. LINE**

MONUMENTS A-5, SA-14, SA-15A
TILDEN PARK BOUNDARY SURVEY
SUMMIT ROAD/AJAX PLACE, BERKELEY
PROJECT NO. 1770105

CONTRACT NO.

SCALE

1" = 250'

DATE

MARCH 2018

DRAWING NO.

1770-CR

SHEET NO.

2
OF
2

EAST BAY REGIONAL PARK DISTRICT