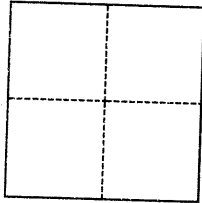


CORNER RECORD

Agency Index BK 125 PG 98
Document Number CR-13175
City of EDEN TOWNSHIP County of ALAMEDA, California
Brief Legal Description Monument at Vasser Ave. and Pomona St. per TR 1002, 30 Maps 88

CORNER TYPE



- ☐ Government Corner ☒ Control
☐ Meander ☐ Property
☐ Rancho ☐ Other

Date of Survey August 5, 2019

COORDINATES (Optional)

N. _____ E. _____
Elevation _____
Units ☐ Metric ☐ U.S. Survey Foot
Horizontal Datum _____
Zone _____ Epoch Date _____
Vertical Datum _____
☐ Complies with Public Resources Code §§8801-8819
☐ Complies with Public Resources Code §§8890-8902

PLS Act Ref.: ☐ 8765(d) ☒ 8771 ☐ 8773 ☐ Other:
Corner/Monument: ☒ Left as found ☐ Established ☐ Rebuilt ☒ Pre-Construction
☐ Found and tagged ☐ Reestablished ☒ Referenced ☐ Post-Construction

Narrative of corner identified and monument as found, set, reset, replaced, or removed:
☒ See sheet #2 for description(s):

FOUND COUNTY MONUMENT, BRONZE PIN IN MONUMENT WELL AT THE INTERSECTION OF VASSER AVENUE AND POMONA STREET AS SHOWN ON TRACT MAP 1002, BOOK 30 PAGE 88. SET STAINLESS STEEL TAGS AS SHOWN ON PAGE 2.

SURVEYOR'S STATEMENT

This Corner Record was prepared by me or under my direction in conformance with

the Professional Land Surveyors' Act on August 10, 2019

Signed [Signature] P.L.S. or P.C.E. No. 7905



COUNTY SURVEYOR'S STATEMENT

AUG 07 2019

This Corner Record was received

and examined and filed OCT 28 2019

Signed [Signature] P.L.S. or P.C.E. No. 7010

Title County Surveyor

County Surveyor's Comment

SPEC 2380



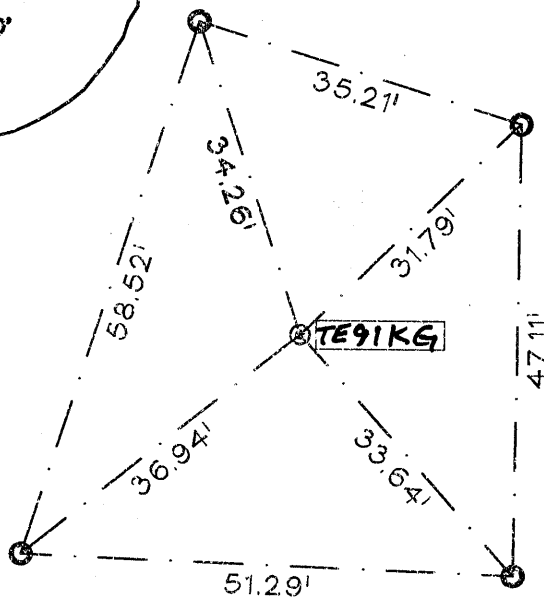
APN:
80D-573-28



SCALE 1"= 20'

VASSAR
AVENUE

POMONA
STREET



REFERENCE:

TRACT 1002 - BOOK 30 PAGE 88

LEGEND:

FOUND STANDARD ALAMEDA
COUNTY MONUMENT IN WELL Ⓞ
SET STAINLESS STEEL
TAG (L.S. 7905) AND NAIL Ⓞ
COUNTY MONUMENT No. AATTA

ALS JOB 2019-041