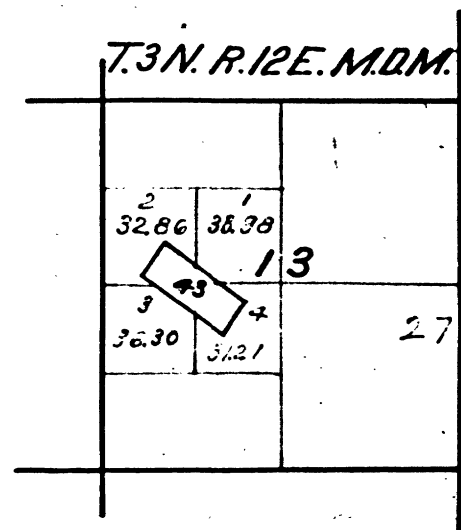


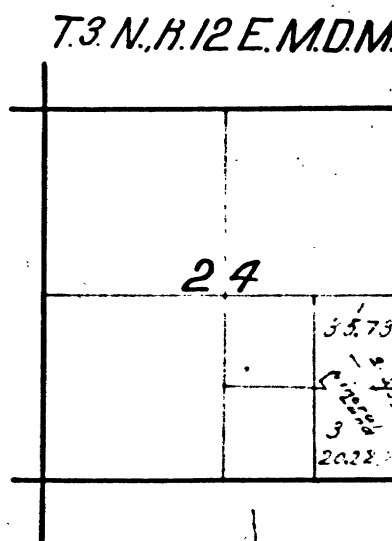
Township N°3 North, Range N°12 East, Mount Diablo Meridian, California.



2749-93 Maloney Quartz Mine.

The above diagram of Section N°13, Township N°3 North, Range N°12 East, Mount Diablo Meridian, is correctly copied from the original map as amended and on file in this Office.
U.S. Surveyor General's Office.
San Francisco California.
September 28th 1888

R.P. Hammond Jr.
U.S. Surv. Genl. Cal.



Segregation of agricultural from mineral land.
3- Lots 1, 2, 3 in sec 24, See field notes of Dep. Sur. R. H. Coulter, dated April 29th 1886.

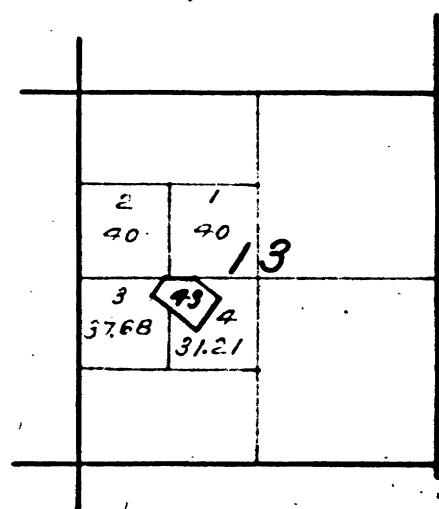
The above diagram showing amendments to Section N°24, Township N°3 North, Range N°12 East, Mount Diablo Meridian, is correctly copied from the original Map as amended and on file in this Office.
U.S. Surveyor General's Office.
San Francisco California.
May 19th 1886.

R.P. Hammond Jr.
U. S. Surv. Genl. Cal.

DEPARTMENT OF THE INTERIOR,
GENERAL LAND OFFICE,
Washington, D. C. Dec. 14th 1901.
I hereby certify that this is a true copy
of the plats of official survey of the lands
to which it relates, on file in this office.

H. L. Smith
Recorder, General Land Office.

T.3 N., R. 12 E. M.D.M.



2749-93 Maloney Quartz Mine.

The above diagram of Sec. 13, Township 3 North, Range 12 East, Mount Diablo Meridian, is correctly copied from the original map as amended and on file in this Office.
U.S. Surveyor General's Office.
San Francisco, California.
October 15th 1894

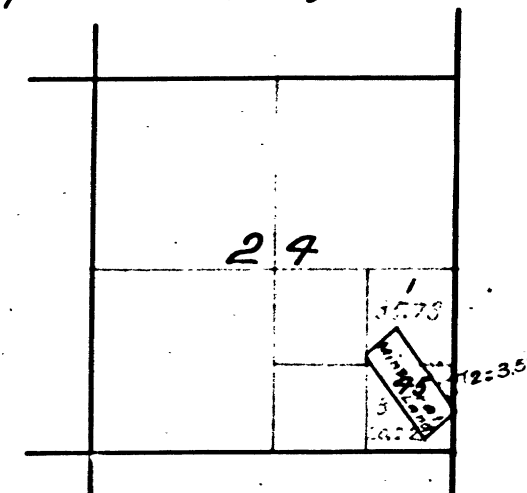
W.S. Green
U. S. Surv. Genl. Cal.

Seal

CHAINS

CHAINS
10 20 40 60 80 120

Township N°3 North, Range N°12 East, Mount Diablo Meridian.



95 Garibaldi Quartz Mine. 3502 -

The above diagram of Sec. 24, Township N°3 North, Range N°12 East Mount Diablo Meridian, as amended, is correctly copied from the original plat, on file in this Office.
U.S. Surveyor General's Office.
San Francisco California.
December 13, 1897

W.S. Green
U.S. Surv. Gen. Cal.

Seal

41 223

T.3 N R 12 E M.D.

BLM 90