

County Surveyors Office  
Stanislaus County Cal.

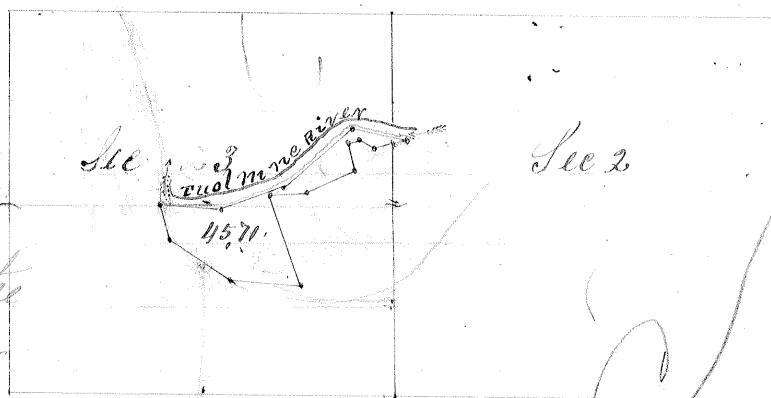
Swamp and Overflowed Lands

Survey No 150 Correction of No 41

Township 4 South

Range 10 East

Sections 2 & 3 all between the U.  
S. M. line and the left bank of the  
Tuolumne River in the East 2 &  
The South West 1/4 of Sec 3 & the  
West 1/2 of the West 1/2 of Sec 2



Scale 1/2 Mile to 1 Inch

Base and Meridian of Mount Diablo

Survey No 41

Containing 45.71 acres

Point in full

Surveyed January 11<sup>th</sup> 1861

for James M. Hudson

Field Notes

Beginning at Meander Post on the East line of Sec 3 run on the U.  
S. M. line, N 78 1/2° E 336 chs. to the left bank of the Tuolumne River  
Meander down Stream Run N 66° W 900 chs. S 62° W 700 chs. S 71 1/2° W 1870 chs.  
N 86 1/2° W 300 chs. to the U. S. M. line Run on the U. S. M. line  
S 14° E 750 chs. S 57 1/2° E 1500 chs. S 86° E 1647 chs. N 20° W 2028 chs. N 86 1/2° E 800 chs.  
N 67° E 1100 chs. N 9° W 618 chs. N 74° E 2500 chs. S 64 1/2° E 300 chs. N 78° E 336 chs.  
to the place of Beginning

The above was embraced in Survey No 41 Made

February 5<sup>th</sup> 1856 for James M. Hudson

Run by the True Meridian Magnetic Variation 15° 30' East

Surveyed in accordance with the Act of the Legislature concerning  
Swamp and Overflowed Lands approved April 28<sup>th</sup> 1855 and  
the instructions of the Surveyor General

Silas Wilcox

County Surveyor Stanislaus County

Approved January 23<sup>rd</sup> 1861

N. A. Higley

Surveyor General

Recorded January 31<sup>st</sup> 1861

Silas Wilcox

County Surveyor