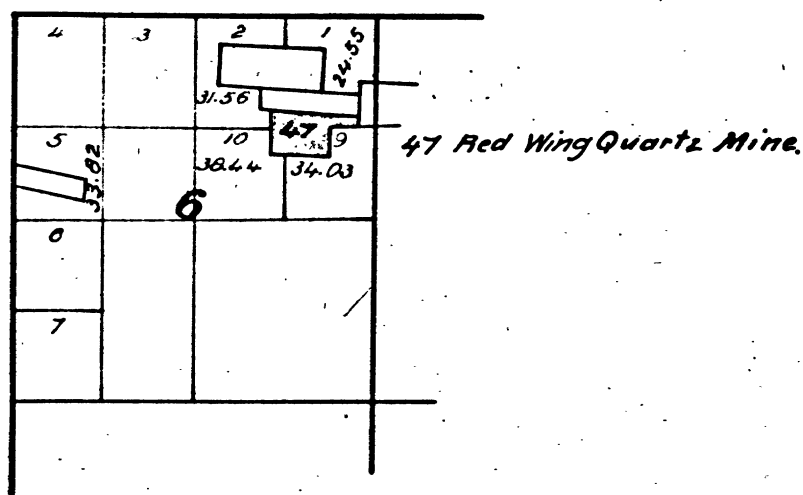


Township N° 3 North, Range N° 14 East, Mount Diablo Meridian, California.

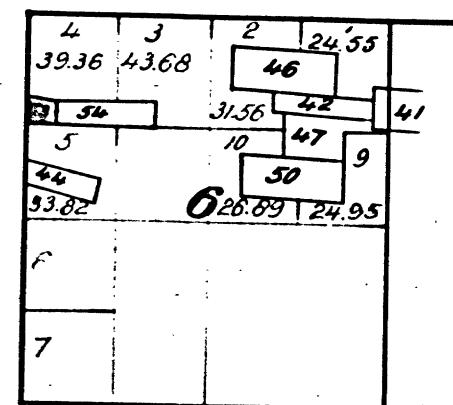
T. 3 N. R. 14 E.
M. D. M.



The above diagram of Section 6, Township N° 3 North, Range N° 14 East, Mount Diablo Meridian is correctly copied from the original map as amended and on file in this Office.
U. S. Surveyor General's Office,
San Francisco, California
September 28th 1882.

W. H. Brown
U. S. Surv. Gen'l. Col.

T. 3 N. R. 14 E. M. D. M.

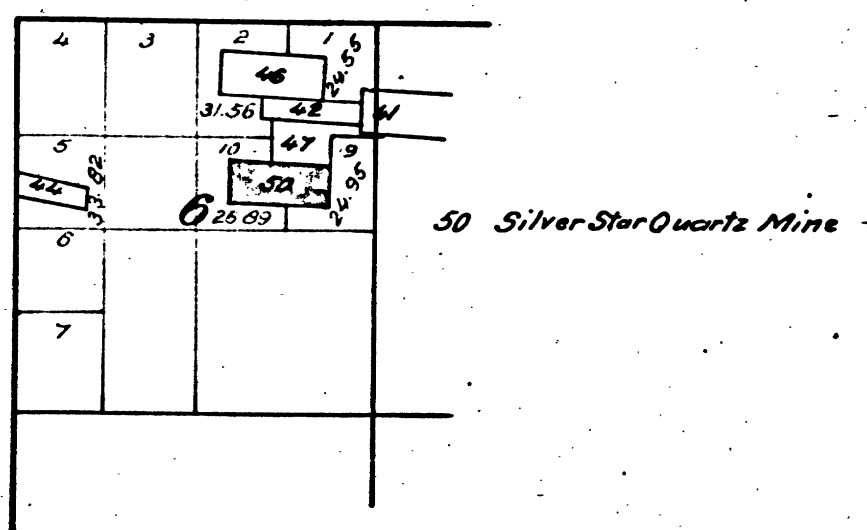


53. Beatrice Quartz Mine.
54 Miralda.

The above diagram of Sec. 6, Township N° 3 North, Range N° 14 East, Mount Diablo Meridian, is correctly copied from the original map as amended and on file in this office.
U. S. Surveyor General's Office,
San Francisco, California
November 29th 1887

P. P. Hammond, Jr.
U. S. Surv. Gen'l. Col.

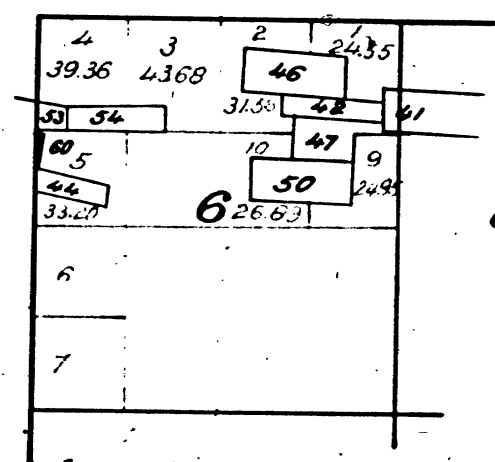
T. 3 N. R. 14 E.
M. D. M.



The above diagram showing amendments to Section 6 Township N° 3 North Range N° 14 East Mount Diablo Meridian is correctly copied from the original map as amended and on file in this Office.
U. S. Surveyor General's Office,
San Francisco, California
September 8th 1885.

W. H. Brown
U. S. Surv. Gen'l. Col.

T. 3 N. R. 14 E. M. D. M.



60 Noble Quartz Mine.

The above diagram showing amendments to Section 6 Township N° 3 North, Range N° 14 East, Mount Diablo Meridian, is correctly copied from the original map as amended and on file in this office.
U. S. Surveyor General's Office,
San Francisco, California.
April 3rd 1889.

P. P. Hammond, Jr.
U. S. Surv. Gen'l. Col.

DEPARTMENT OF THE INTERIOR,
GENERAL LAND OFFICE,
Washington, D. C. Feb. 5. 1892.
I hereby certify that this is a true copy
of the plats of official survey of the lands
to which it relates, on file in this office.

H. Hammond
Recorder, General Land Office.

T. 3 N. R. 14 E. M. D.

41 259

CHAINS

CHAINS

10 20 40 60 80 120

BLM 126