

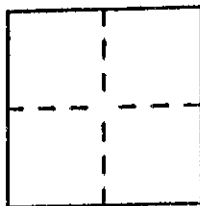
# CORNER RECORD

98-049 7 Cr 027

Document Number CR 890

City of OAKLAND County of ALAMEDA, California

Brief Legal Description LOT 11, AMENDING MAP OF TRACT 4072, FILED MARCH 10, 1992  
IN MAP BOOK 201, PAGE 1-4, ALAMEDA COUNTY RECORDER'S OFFICE



## CORNER TYPE

Government Corner ☐ Control ☐  
 Meander ☐ Property ☒  
 Rancho ☐ Other ☐  
 Date of Survey MARCH 4, 1997

## COORDINATES (Optional)

N. \_\_\_\_\_  
 E. \_\_\_\_\_  
 Zone \_\_\_\_\_ Datum \_\_\_\_\_  
 Elev. \_\_\_\_\_

Corner — Left as found ☒ Found and tagged ☐ Established ☐ Reestablished ☐ Rebuilt ☐

Identification and type of corner found: Evidence used to identify or procedure used to establish or reestablish the corner:

SEE SKETCH ON BACK

BASIS OF BEARINGS: LINE BETWEEN TWO FOUND STANDARD CITY OF OAKLAND  
MONUMENTS ON MENDOZA DRIVE OPPOSITE LOTS 17 & 18 TAKEN AS S42°57'01"E,  
50.00', AS SHOWN ON AMENDING MAP OF TRACT 4072, FILED ON MARCH 10, 1992,  
IN MAP BOOK 201, PAGE 1-4, ALAMEDA COUNTY RECORDER'S OFFICE

A description of the physical condition of the monument as found and as set or reset:

STANDARD CITY MONUMENTS

SEE SKETCH ON BACK

## SURVEYOR'S STATEMENT

This Corner Record was prepared by me or under my direction in conformance with

the Land Surveyors' Act on MAY 22, 1997.

Signed [Signature] L.S. or R.C.E. Number 15227

## COUNTY SURVEYOR'S STATEMENT

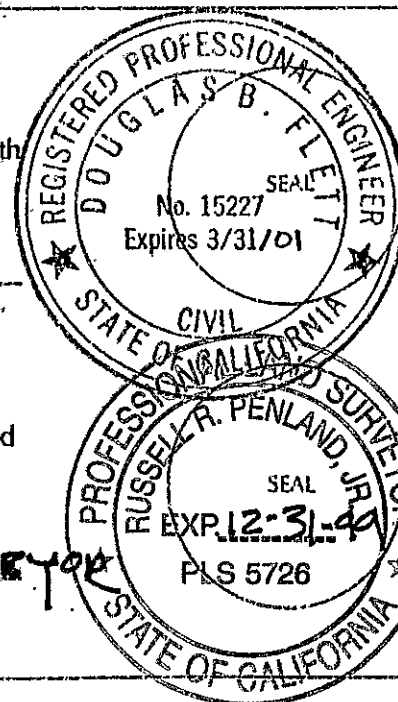
This Corner Record was received \_\_\_\_\_ 19\_\_\_\_ and examined

and filed

Signed

5-27-98 1998 DEPUTY  
Russell R. Penland Title COUNTY SURVEYOR

County Surveyor's Comment \_\_\_\_\_



SEE DETAIL A

LOT 7

S64°30'00"E 103.00'

SET HUB  
RCE 15227

AMENDING MAP  
OF TRACT 4072

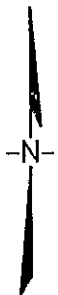
LOT 11

N14°42'31"E 143.97'

LOT 10

FOUND 3/4" I.P.  
RCE 15227

L=53.47'  
R=135.00'  
Δ=22°41'40"



MON

N47°02'59"E  
S42°57'01"E 50.00'  
MENDOZA DRIVE  
BASIS OF BEARINGS

MON

FOUND CUT  
CROSS

890

NOTE: ALL MONUMENTS  
FLUSH AT TIME OF SURVEY

0.30' SET 1.5" IP  
RCE 15227\*

1.04'

FND HUB  
RCE 15227

DETAIL A  
N.T.S.

LOT 12

N15°30'42"E 109.83'

\*SET PER TRACT 4072  
AMENDED MARCH 10, 1992  
PER AMENDING MAP  
TRACT 4072

● STANDARD CITY MONUMENT  
WITH BRASS DISK AND  
PUNCH MARK

GRAPHIC SCALE

1"=20'



0 20 40 60