

# CORNER RECORD

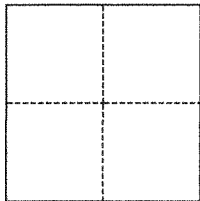
Agency Index Bk 144 PG 61  
Document Number CR 15055

City of OAKLAND County of ALAMEDA, California

Brief Legal Description CITY SURVEY MONUMENT AT GENOA ST & 59TH ST

## CORNER TYPE

## COORDINATES (Optional)



- ☐ Government Corner ☒ Control  
☐ Meander ☐ Property  
☐ Rancho ☐ Other

Date of Survey January 21, 2021

N. \_\_\_\_\_ E. \_\_\_\_\_

Elevation \_\_\_\_\_

Units ☐ Metric ☒ U.S. Survey Foot

Horizontal Datum \_\_\_\_\_

Zone \_\_\_\_\_ Epoch Date \_\_\_\_\_

Vertical Datum \_\_\_\_\_

☐ Complies with Public Resources Code §§8801-8819

☐ Complies with Public Resources Code §§8890-8902

PLS Act Ref.:

☐ 8765(d)

☒ 8771

☐ 8773

☐ Other:

Corner/  
Monument:

☒ Left as found

☐ Established

☐ Rebuilt

☒ Pre-Construction

☐ Found and tagged

☐ Reestablished

☒ Referenced

☐ Post-Construction

Narrative of corner identified and monument as found, set, reset, replaced, or removed:

☒ See sheet #2 for description(s):

## SURVEYOR'S STATEMENT

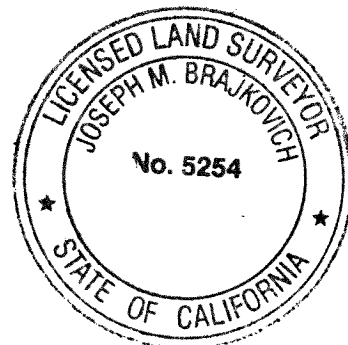
This Corner Record was prepared by me or under my direction in conformance with

the Professional Land Surveyors' Act on

Signed

P.L.S. or R.C.E. No.

2-10-21  
5254



## COUNTY SURVEYOR'S STATEMENT

This Corner Record was received

and examined and filed

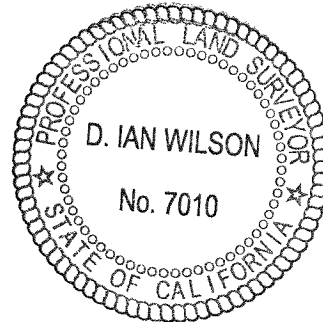
Signed

P.L.S. or R.C.E. No.

JAN 12 2022  
7010

Title ALAMEDA COUNTY SURVEYOR

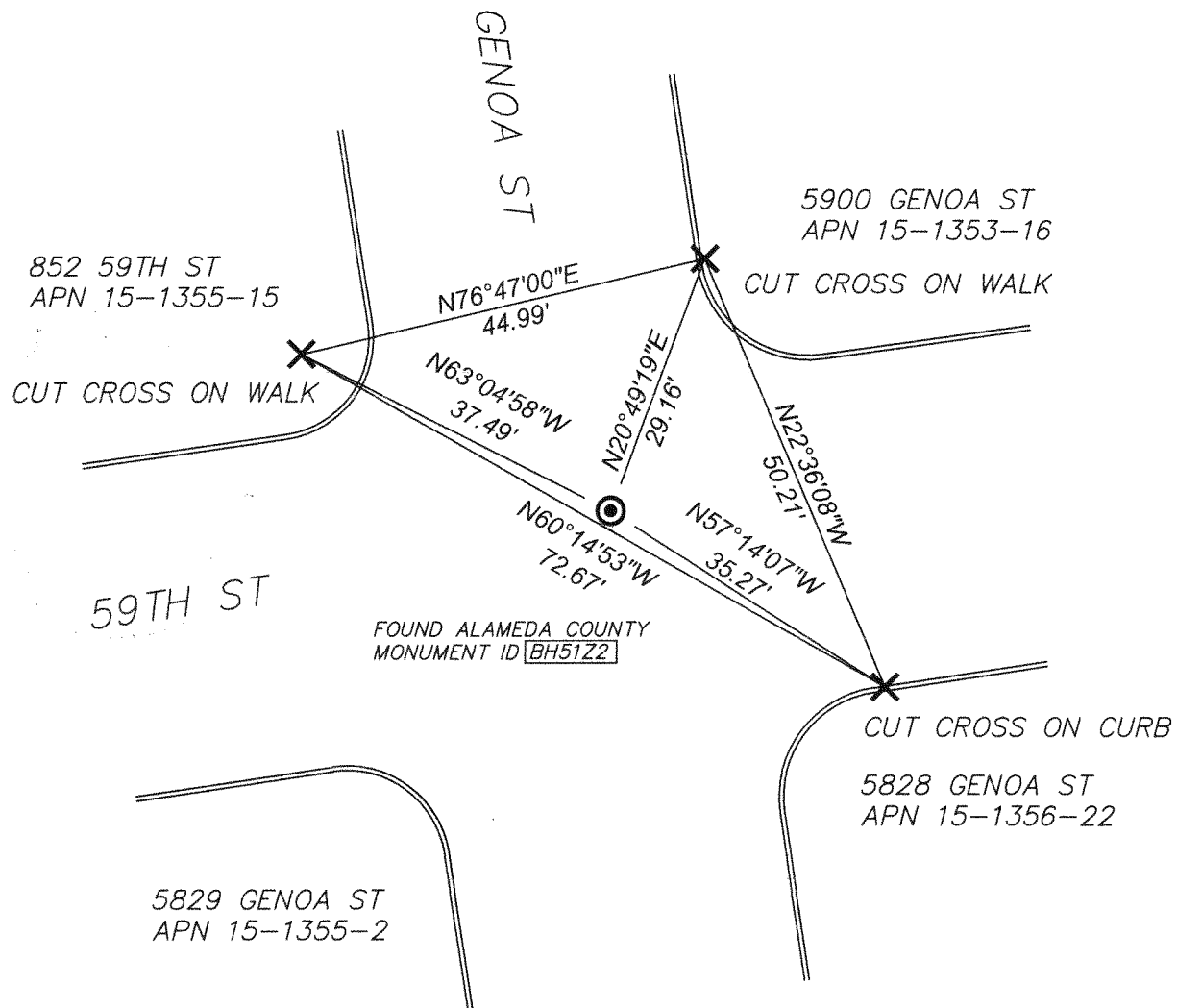
County Surveyor's Comment



## LEGEND

- AA### ALAMEDA COUNTY MONUMENT ID  
 ##### STREET ADDRESS  
 APN ASSESSOR'S PARCEL NUMBER  
 X CUT CROSS SET IN CURB  
 OR WALK AS DISPLAYED  
 ○ FOUND SURVEY MONUMENT  
 (1/8" PIN IN DISC IN WELL)

SCALE: 1" = 20'



21001 SHEET L-04