

CITY ENGINEER'S CERTIFICATE

I hereby certify that I have examined the within final map of Tract No. 4090 that the subdivision shown hereon is substantially the same as it appeared on the tentative map and any approved alterations thereto as approved by the Santa Clara Planning Commission on the 23rd day of August, 1965; that all provisions of the Subdivision Map Act and any local ordinance applicable at the time of approval of the tentative map have been complied with and that I am satisfied that said map is technically correct.

James T. Pugh, City Engineer
City of Santa Clara, California

Date: 6/10/66

by *William C. Hanley*
Deputy

CITY CLERK'S CERTIFICATE

I hereby certify that the within final map of Tract No. 4090 was approved by the City Council of the City of Santa Clara at its regular meeting held on the 15th day of June, 1966, and that said Council did not at said meeting accept for dedication all streets and portions of streets and all easements offered for dedication and shown on said map within said subdivision.

William C. Hanley
WILLIAM C. HANLEY
CITY CLERK AND EX-OFFICIO CLERK OF THE
CITY OF SANTA CLARA, CALIFORNIA

OWNERS' CERTIFICATE

We hereby certify that we are the owners of or have some right, title or interest in and to the real property included within the subdivision shown upon this map; and that we are the only persons whose consent is necessary to pass a clear title to said real property and we hereby consent to making and recording of said map and subdivision as shown within the blue border lines and hereby dedicate to public use all streets and portions of streets not heretofore existing as shown within said subdivision and also dedicate easements for any and all public uses, upon or over said streets and portions of streets. We also hereby dedicate to public use easements for public utilities, under, on or over those certain strips of land lying between the front and/or side lines of lots and the dashed lines, each designated as "FILE" (Public Utility Easement) shown drainage easements, existing easements and slope easements.

AS OWNERS: WESTERN TITLE GUARANTY COMPANY-SANTA CLARA COUNTY DIVISION, a Corporation

W. C. Hanley
VICE PRESIDENT
ASSISTANT SECRETARY

AS TRUSTEE: WESTERN TITLE INSURANCE COMPANY, a corporation

W. C. Hanley
VICE PRESIDENT
ASSISTANT SECRETARY

STATE OF CALIFORNIA COUNTY OF SANTA CLARA

On this 16 day of May, 1966, before me, *Eugene R. Mastin*, a Notary Public in and for said State and County, residing therein, duly commissioned and sworn, personally appeared *WILLIAM C. HANLEY* and *G. E. Campbell*, known to me to be the Vice President and Assistant Secretary respectively of the Western Title Guaranty Company-Santa Clara County Division, a Corporation, the Corporation that executed the within instrument and also known to me to be the persons who executed it on behalf of said corporation and they acknowledged to me that said corporation executed the same as Owner.

My Commission Expires: *APRIL 24, 1967*
NOTARY PUBLIC IN AND FOR THE COUNTY OF SANTA CLARA, STATE OF CALIFORNIA

SURVEYOR'S CERTIFICATE

I, Eugene R. Mastin, hereby certify that I am a Registered Civil Engineer of the State of California; that this map correctly represents a survey made by me or under my supervision during the month of July, 1965, that the survey is true and complete as shown, that all monuments shown hereon actually exist or will be set by May, 1967, that their positions are correctly shown and that said monuments are sufficient to enable the survey to be retraced.

Dated May, 16, 1966
Eugene R. Mastin
EUGENE R. MASTIN
R.C.E. 6567

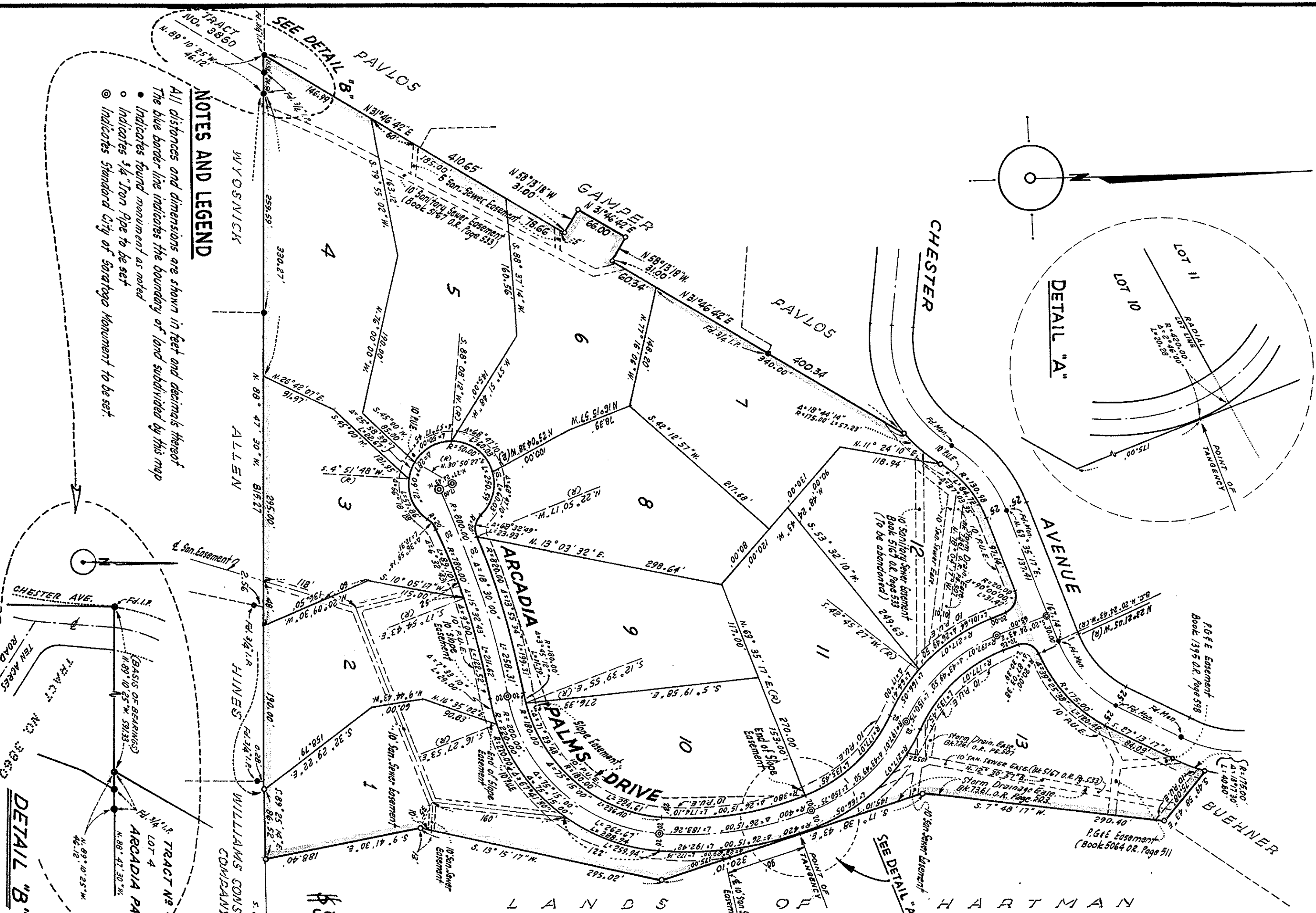
TRACT NO. 4090
ARCADIA PALMS
BEING A PORTION OF THE QUITO RANCHO
CITY OF SARATOGA, SANTA CLARA COUNTY
CALIFORNIA

SCALE: 1" = 100'

MAY — 1966

EUGENE R. MASTIN
CIVIL ENGINEER

40 WOODHAMS RD. SANTA CLARA CO. CALIF.



3671711
RECORDERS CERTIFICATE

File No. 3671711, Fee \$ 500 (Five) paid.
Filed for record this 14th day of June, 1966 at 3:05 P.M. in Book 211 of Maps at Page 5 in the Office of the County Recorder of the County of Santa Clara, State of California.

Paul R. Teich, County Recorder

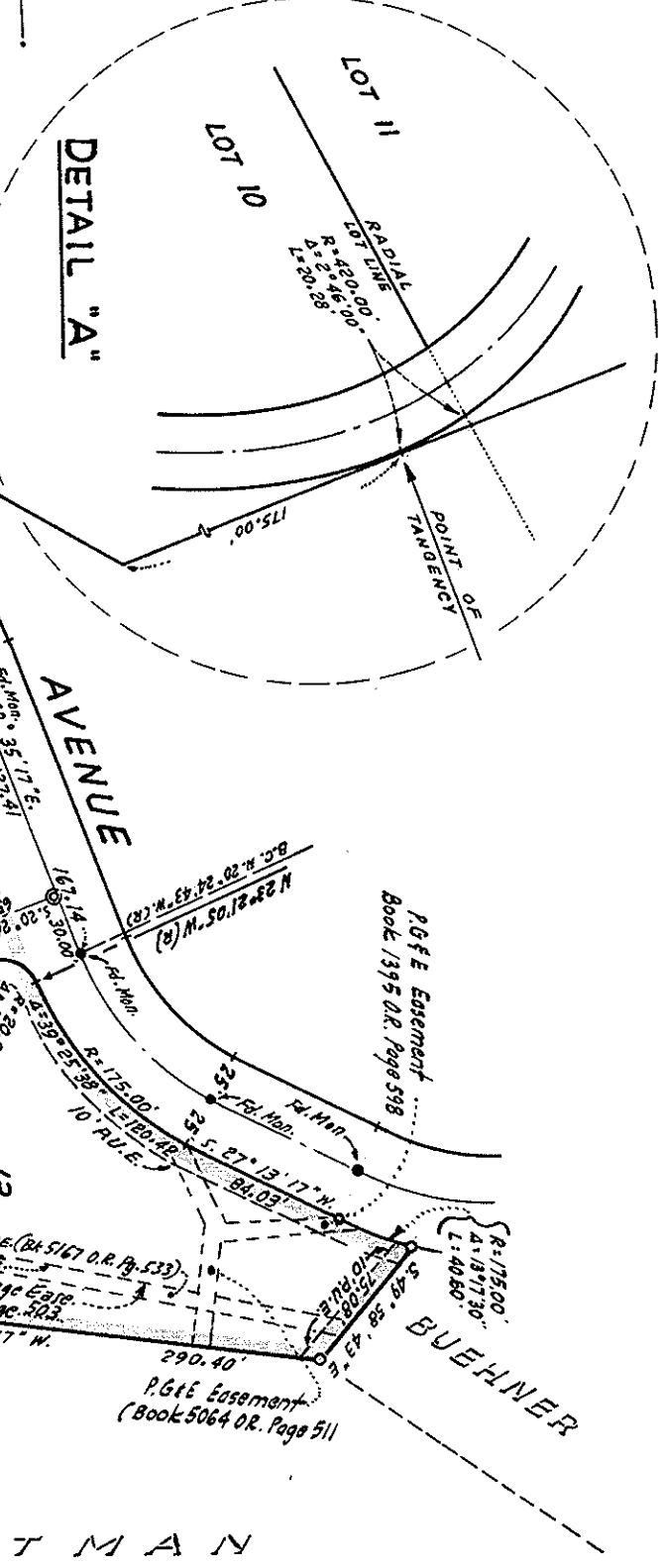
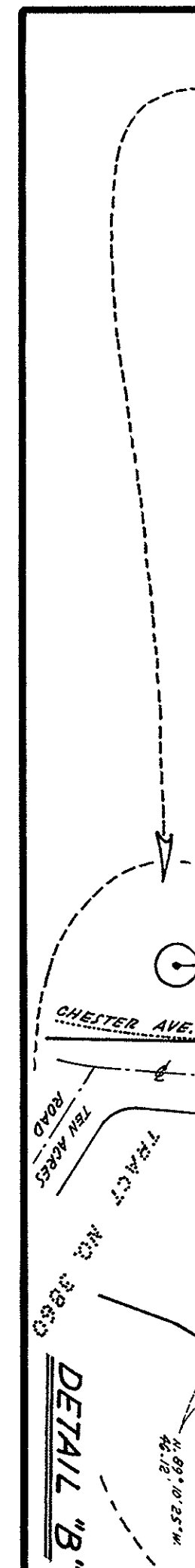
By *Donald S. Hanley*
DEPUTY

BASIS OF BEARINGS

The bearing (N. 89° 10' 25" W.) of the northerly boundary line of Tract No. 3860, as shown on that certain map entitled "Tract No. 3860" filed in Book 193 of Maps at Page 29, Santa Clara County Records, was taken as the basis of bearings for this map.

NOTES AND LEGEND

- All distances and dimensions are shown in feet and decimals thereof.
- The blue border line indicates the boundary of land subdivided by this map.
- Indicates found monument as noted.
- Indicates 1/4" Iron Pipe to be set.
- Indicates Standard City of Saratoga Monument to be set.



TRACT NO. 4090
ARCADIA PALMS
Page 29, Santa Clara County Records, was taken as the basis of bearings for this map.

By *Donald S. Hanley*
DEPUTY

EUGENE R. MASTIN
CIVIL ENGINEER

40 WOODHAMS RD. SANTA CLARA CO. CALIF.

JOE NO. 51-65