

PARCEL MAP No.37-55

BEING A SUBDIVISION OF THE SE 1/4 OF
THE SW 1/4 OF SECTION 8, T.5S, R.33E.,
M.D.M., COUNTY OF MONO,
STATE OF CALIFORNIA.

NOTE:

- INDICATES 2" IRON PIPE WITH CONCRETE PLUG, TACK & TAG, L.S. 3462 SET FLUSH WITH GROUND.
- INDICATES FOUND MONUMENT AS SHOWN AND NOTED HEREON.

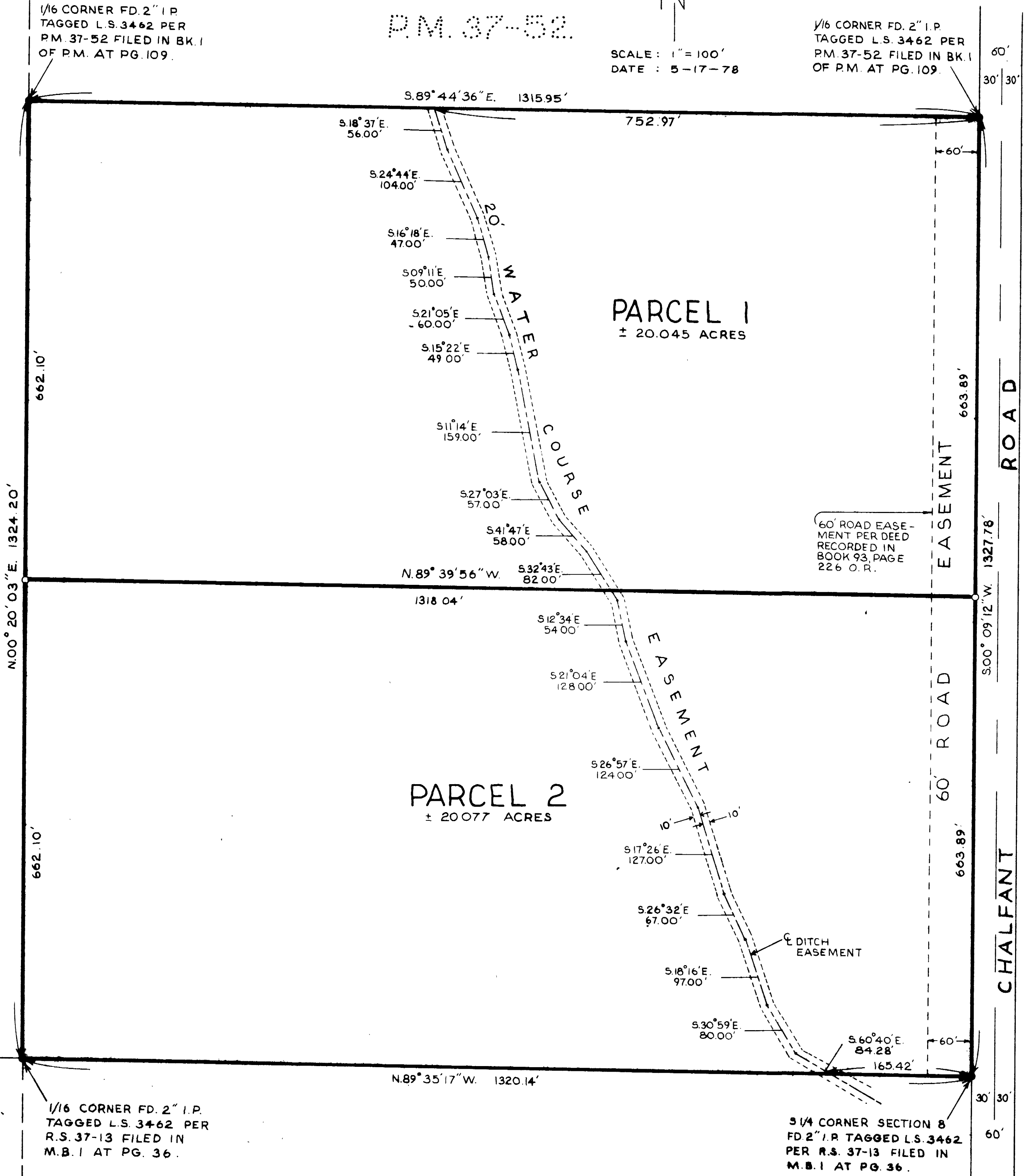
BASIS OF BEARING:
BEARINGS BASED ON FOUND MONUMENTS -
E 1/4 CORNER SEC. 8 TO NE CORNER SEC. 8 -
N00°29'00"E. AS PER PARCEL MAP No. 37-21
FILED IN BOOK 1 OF PARCEL MAPS AT PAGE 57.

SCALE: 1" = 100'
DATE: 5-17-78

1/16 CORNER FD. 2" I.P.
TAGGED L.S. 3462 PER
P.M. 37-52 FILED IN BK. 1
OF P.M. AT PG. 109.

P.M. 37-52.

1/16 CORNER FD. 2" I.P.
TAGGED L.S. 3462 PER
P.M. 37-52 FILED IN BK. 1
OF P.M. AT PG. 109.



R.S. 37-13

PH Vol. 2 PAGE 3-A