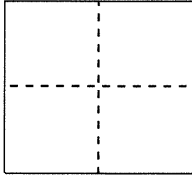


**CORNER RECORD**Document Number **CR 9529**City of Oakland (APN 43A-4690-13)County of Alameda, CaliforniaBrief Legal Description Monument near 3462 Calandria Avenue**CORNER TYPE**

Government Corner ☐ Control ☒  
 Meander ☐ Property ☐  
 Rancho ☐ Other ☐

Date of Survey November 14, 2016**COORDINATES (Optional)**

N. \_\_\_\_\_  
 E. \_\_\_\_\_  
 Zone \_\_\_\_\_ NAD27 ☐ NAD83 ☐  
 NAD83 Epoch \_\_\_\_\_  
 Elev. \_\_\_\_\_  
 Vert. Datum: NGVD29 ☐ NAVD88 ☐  
 Meas. Units: Metric ☐ Imperial ☐

**Pre-Construction (water line) Corner Record**

Corner - Left as found ☒ Found and tagged ☐ Established ☐ Reestablished ☐ Rebuilt ☐

Identification and type of corner found: Evidence used to identify or procedure used to establish or reestablish the corner:  
 Found monument that could be damaged or destroyed by planned water line construction project.

Monument was referenced as shown on Page 2. The purpose of this Corner Record is to preserve possible evidence only; no attempt was made to determine the relationship to property, centerline, or right-of-way lines.

A description of the physical condition of the monument as found and as set or reset:

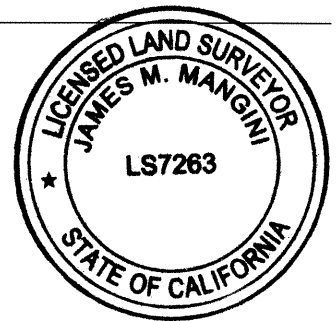
Monument was found in good condition and was referenced with four set reference points representing two intersecting lines as shown on Page 2.

Reference EBMUD Field Book 4597, Page 07-08 (Burke/Chou)

**SURVEYOR'S STATEMENT**

This Corner Record was prepared by me or under my direction in conformance with the Professional Land Surveyor's Act on DECEMBER 8, 2016

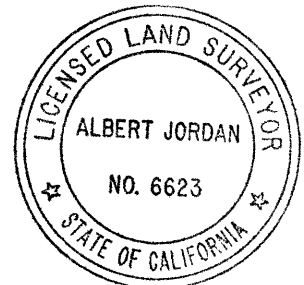
Signed James M. Mangini P.L.S. or R.C.E. No. 7263

**COUNTY SURVEYOR'S STATEMENT**

This Corner Record was received 12-08-2016  
 and examined and filed 01-20-2017

Signed Albert Jordan P.L.S. or R.C.E. No. 6623

Title Deputy County Surveyor

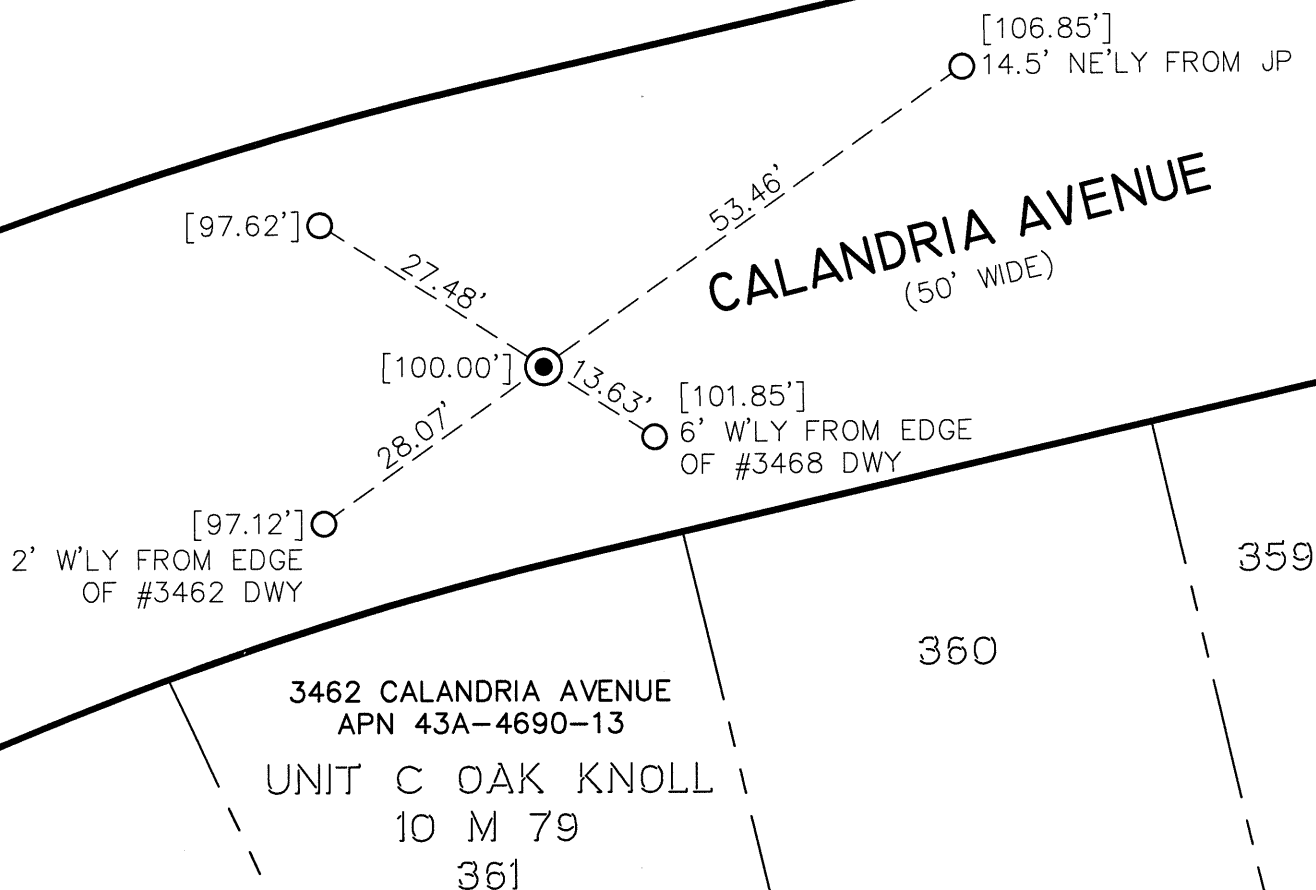


County Surveyor's Comment: \_\_\_\_\_

OAKLAND

ALAMEDA COUNTY

PLAT OF THE PART OF  
THE RANCHO DE SAN ANTONIO  
FINALLY CONFIRMED TO YGNACIO PERALTA  
A M 60



**LEGEND**

- ⊙ FOUND 1/4" PIN, IN CONCRETE BASE, DOWN 1.1', IN STANDARD MONUMENT WELL; IN GOOD CONDITION
- SET CONCRETE ANCHOR NAIL WITH 1-1/2" ALUMINUM WASHER, STAMPED "EBMUD MON RP"

[ ] ASSUMED ELEVATION (MEASURED USING A LEICA DNA10 DIGITAL LEVEL)



SCALE  
1"=20'



**ADDRESS:** 3462 CALANDRIA AVENUE  
**APN:** 43A-4690-13

**CR# 9529**

**CR**