

1 WATER METER DETAIL

TOP WALL = 657.00

6" PVC CAP WITH 0.2" HOLE DRILLED AT 651.10

"OCS DETAIL"

6" WIDE

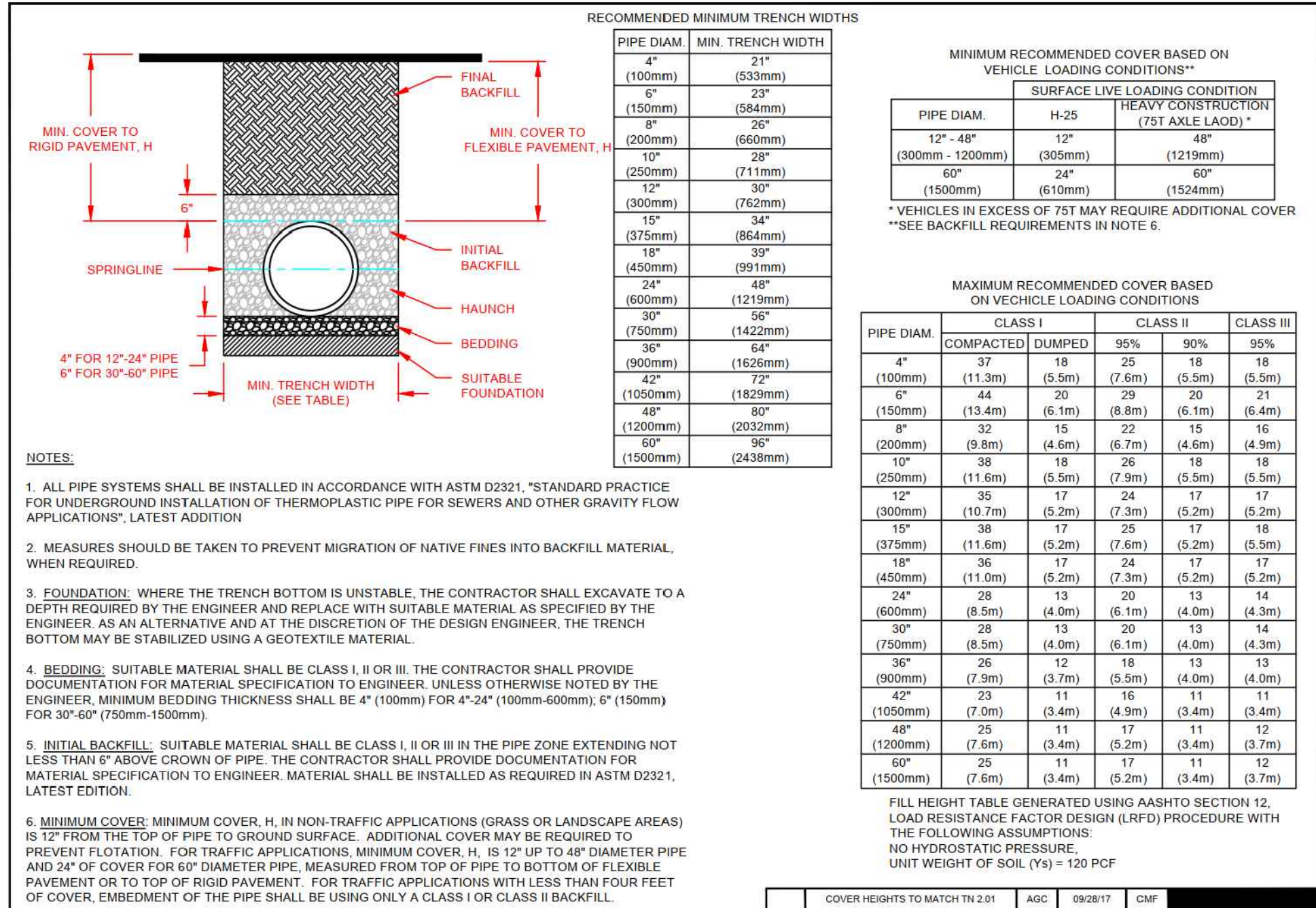
12" OUTFALL ORIFICE =651.10

6" WIDE RECTANGULAR WEIR =654.00

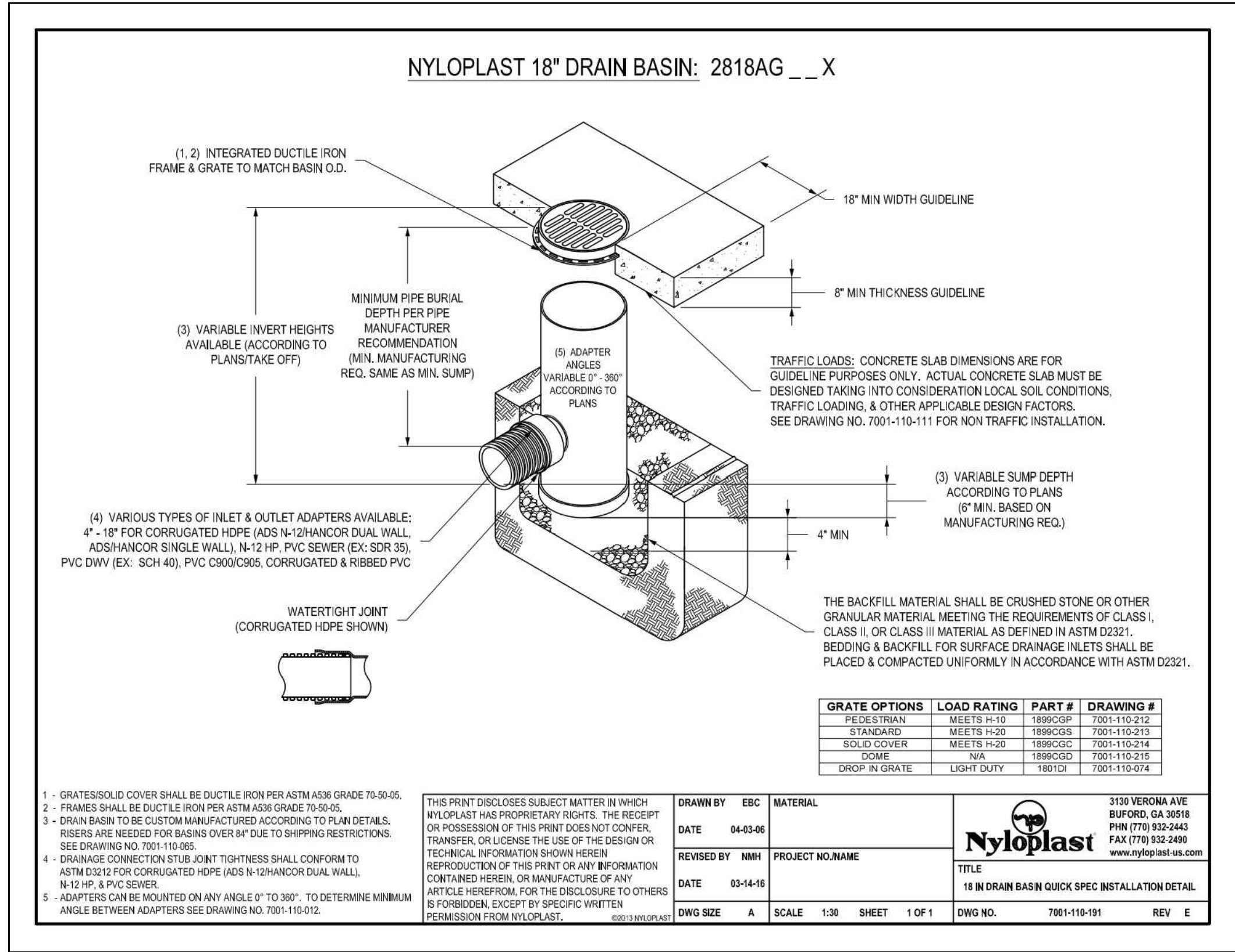
TOP 48" CMP PERFORATED HALF ROUND=653.50

2 OUTLET CONTROL STRUCTURE

3 RESERVED



4 STORM PIPE BEDDING



5 18" DRAIN BASIN



PANDA EXPRESS, INC.

1683 WALNUT GROVE AVE.
ROSEMead, CALIFORNIA 91770

TELEPHONE: 626.799.9898
FACSIMILE: 626.372.8268

All ideas, designs, arrangement and plans indicated or represented by this drawing are the property of Panda Express Inc. and were created for use on this specific project. None of these ideas, designs, arrangements or plans may be used by or disclosed to any person, firm, or corporation without the written permission of Panda Express Inc.

REVISIONS:

ISSUE DATE:

PLAN CHECK	03-08-23
BID	XX-XX-XX
CONSTRUCTION	XX-XX-XX

DRAWN BY: INGENIUM ENTERPRISES

PANDA PROJECT #: D24956
PANDA STORE #: TBD
CIVIL PROJECT #: 220148



INGENIUM ENTERPRISES, INC.
19445 SHUMARD OAK DR.
SUITE 102
LAND O LAKES, FL 34638
PHONE: (813) 387-0084

NCBES CERTIFICATE #C-4114



UTILITY DETAILS III

C04.3

PANDA HOME REV4